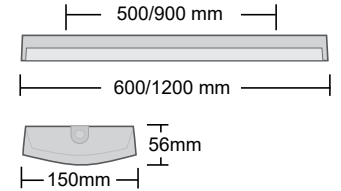
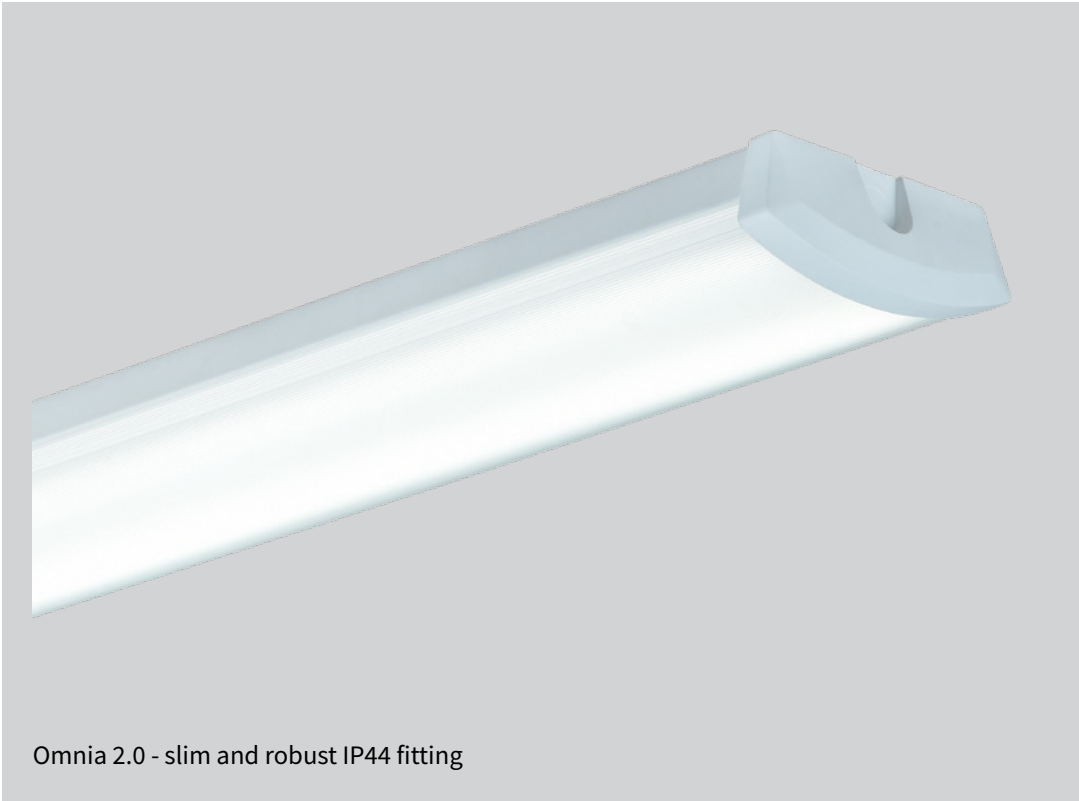


Omnia 2.0



Omnia 2.0 - slim and robust IP44 fitting

Description

Housing in steel plate, powder painted in white (RAL 9016), endcaps in white ABS plastics which are fixed to the housing. Diffuser in opal acrylics (PMMA).

Application areas

Industry facilities, wet room areas, cloakroom, garages, parking etc...

Mounting

Direct in ceiling or on wall. IP44 when horizontal mounting in ceiling. IP40 when suspended and when horizontal or vertical mounting on wall. Wall brackets are available as accessories. The fitting is weight balanced.

Installation

Power connection in center from top of the fitting. Knock-outs available in the end caps. The fitting is supplied with 5x2,5mm² push-in terminal block in center with through wiring possibilities.

Others

Other DALI versions available on request. Wall brackets and safety bracket are available as accessories.

Sensor

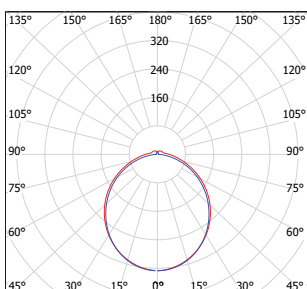
Omnia 2.0 Radar is available with microwave sensor (5,8 GHz). The sensor detects movements in its surroundings, even through windows and thin walls. The sensitivity is adjusted by a DIP-switch (1m - 6m) on the sensor. Likewise, the hold time can also be adjusted (5s-30min). More Radar fitting can be connected (Master/Master), max total effect 400W. A Radar fitting can also be used to control standard fittings (Master/Slave), max total effect 400W.

Fittings (pcs) each circuit

	10-B	10-C	16-B	16-C
16W	37	62	60	90
36W	14	23	23	39

Light source

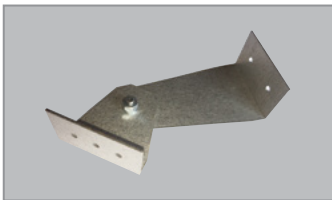
Colour index	Ra >80
Colour tolerance	MacAdam 3
Lifetime LED	L80B50 100 000 h
Lifetime driver	100 000 h (10%)



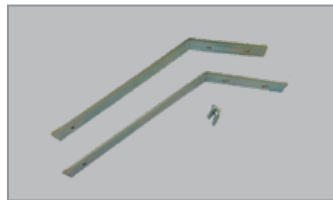
Omnia 2.0



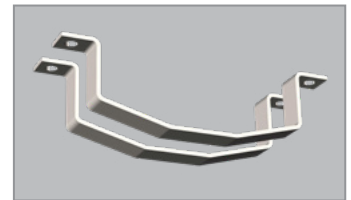
DEFA nr.	Type	Module	Light source	lm fitting	lm/W	Control	Weight (kg)
123164	Omnia 2.0	600	16W 3000K	2100lm	131		1,6
123166	Omnia 2.0 Radar	600	16W 3000K	2100lm	131	Sensor OnOff	1,6
123165	Omnia 2.0	600	16W 4000K	2200lm	138		1,6
123167	Omnia 2.0 Radar	600	16W 4000K	2200lm	138	Sensor OnOff	1,6
123168	Omnia 2.0	1200	36W 3000K	4800lm	133		3,1
123170	Omnia 2.0 Radar	1200	36W 3000K	4800lm	133	Sensor OnOff	3,1
123169	Omnia 2.0	1200	36W 4000K	5000lm	139		3,1
123171	Omnia 2.0 Radar	1200	36W 4000K	5000lm	139	Sensor OnOff	3,1
123393	Omnia 2.0 Radar	1200	36W 4000K	5000lm	139	Sensor MinMaxOff	3,1
123421	Omnia 2.0	1200	46W 3000K	6000lm	130	DALI	3,1
123422	Omnia 2.0	1200	46W 4000K	6100lm	133	DALI	3,1
Accessories:							
114079	Wallbracket 45°	pair					
109549	Wallbracket adjustable	pair					
124349	Safety bracket	pair					
123395	Diffuser	600	opal				
123396	Diffuser	1200	opal				



Adjustable wall bracket - corr. cl. 3



Wall bracket 45° - galvanized



Safety bracket