

Recessed round downlight with LED 1 x VR15 direct distribution with electronic control gear for current driven LED's.

Luminaire luminous flux: 2900lm. Connection power 24.8 Watt.

Luminaire efficiency: 117lm/W.

Luminous colour: 3000K. colour rendering Ra  $\geq$  80.

Life span: 97000 h: L 90 / B 10 / F 10.

Ready for connection with heat resistant wires. for a nominal voltage of 230V 50/60/0Hz

Luminaire housing made of steel with patented assembly kit for an easy secure and fast assembly.

Cieling ring with bayonet catch solvent-free powder-coated in white similar to RAL 9016.

Electronic control gear loose in cieling opening.

Caution ! Do not cover the light fitting with insulating material.

For recessed mounting in cielings with cut openings  $\varnothing$  205 mm.

Highly-specular reflector in high-quality aluminium thickness 1,2 mm.

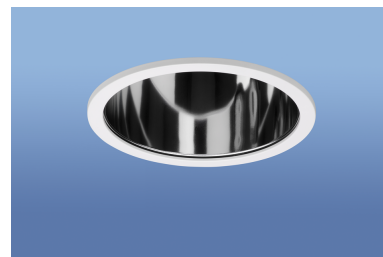
The reflector surface is of super-purity aluminum chemically polished and post-anodised with a minimum coating thickness of 5 $\mu$ m. No disturbing interference colours.

With an internal diffusion chamber for a soft light appearance at a high efficiency attaining a glare reduction.

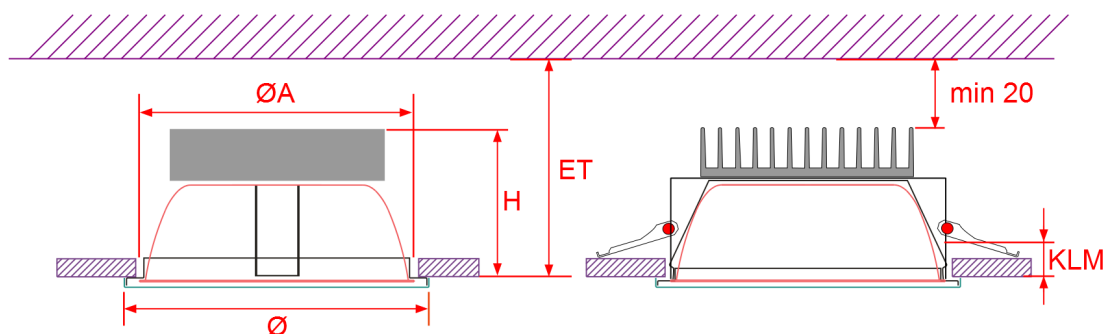
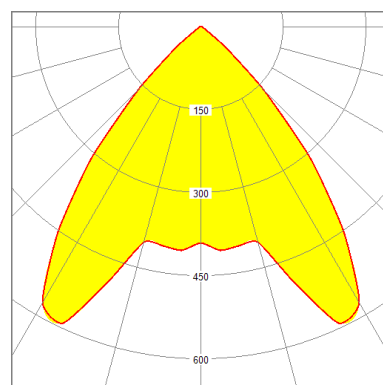
Shielding angle  $\alpha$  = 25°.

Luminance values according to DIN EN 12464 for radiation angles exceeding 65° all-round are under 3000 cd/m<sup>2</sup>.


Weight: 0.94 kg



Luminaire colour: ähnlich RAL 9016



$\varnothing \times H$	$\varnothing A$	ET/ KLM
220 x 120	205	140/1-28

0.94 kg IP20 

produced according to   230V 50/60/0Hz  
 DIN VDE 0711

Alle technischen Daten sowie Gewichts- und Maßangaben sind sorgfältig erstellt. Irrtum vorbehalten. Produktabbildungen sind beispielhaft und können vom Original abweichen. Änderungen, die dem Fortschritt dienen, behalten wir uns vor. Verbindliche Daten im Auftragsfall erfragen.