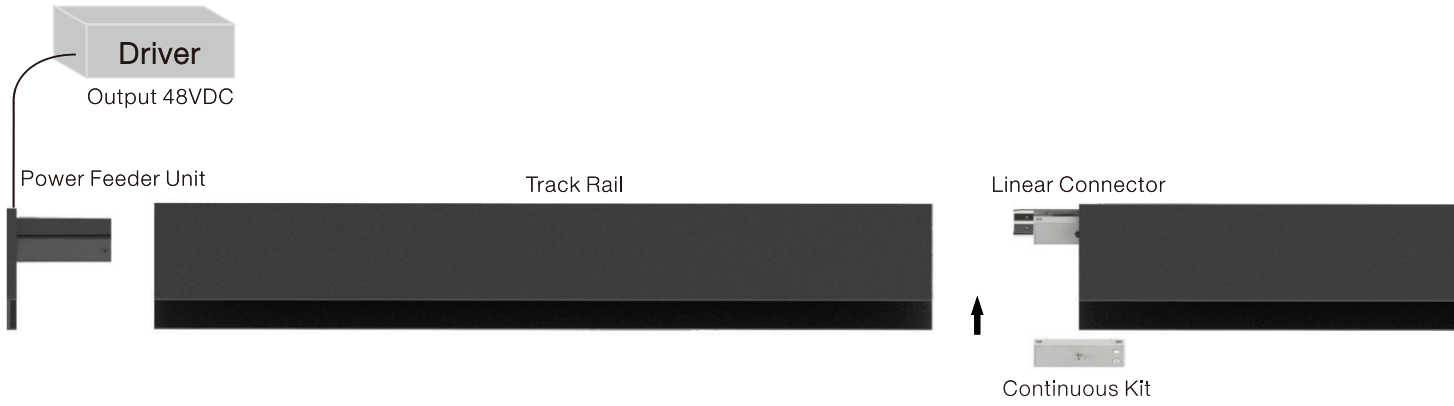
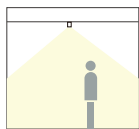
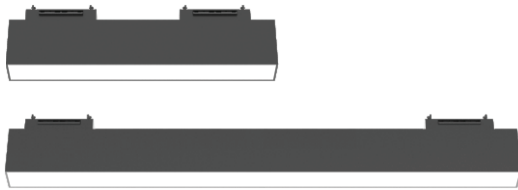


NEKO / MODULINE Linear System

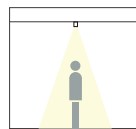
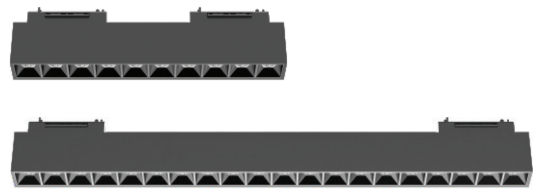
48V Low Voltage Modular Linear System

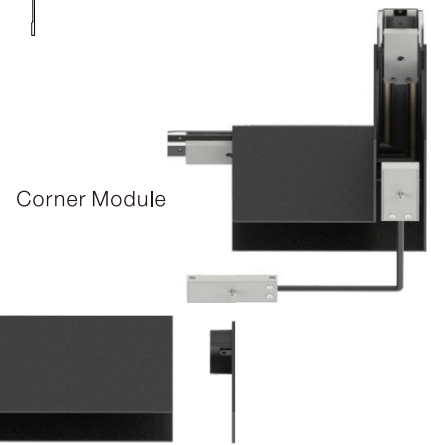
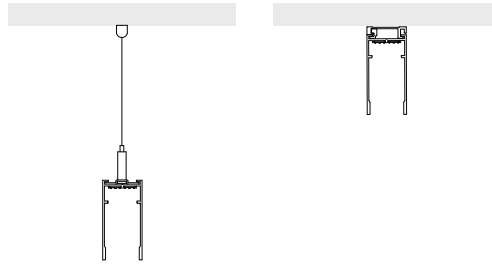
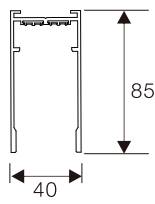


Linear General Light
ML35-GL300/ ML35-GL600

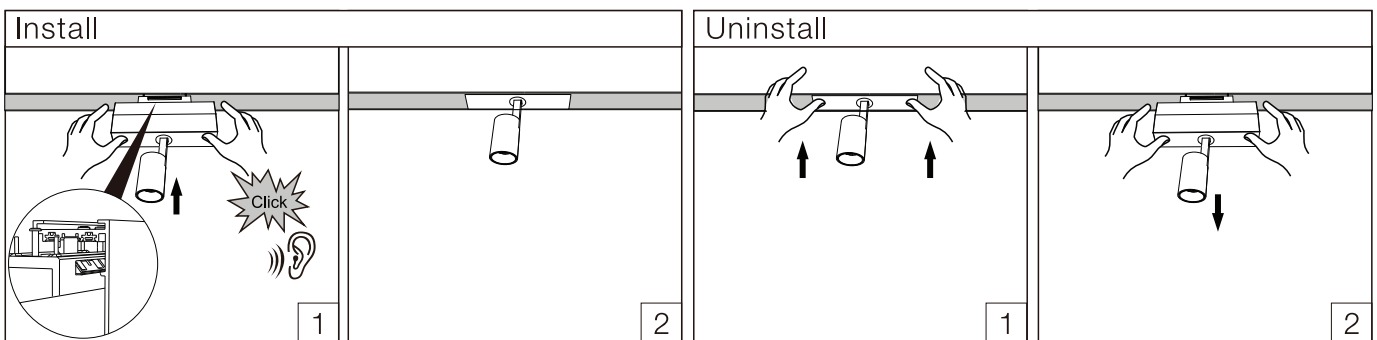
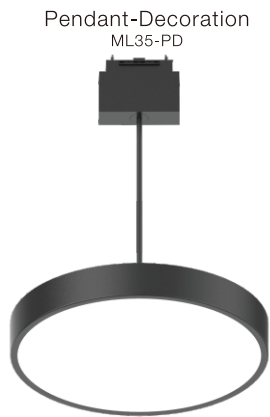


Linear Accent Light
ML35-AL300/ ML35-AL600





Endcap



NEKO / MODULINE Linear System
48V Low Voltage Modular Linear System

Surface Mounted

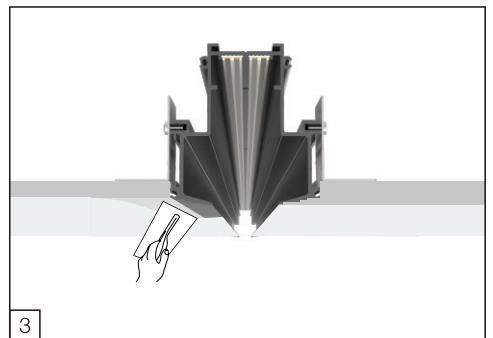
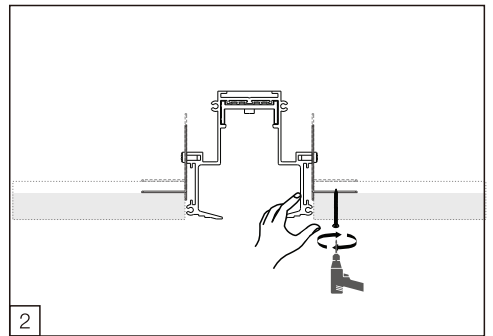
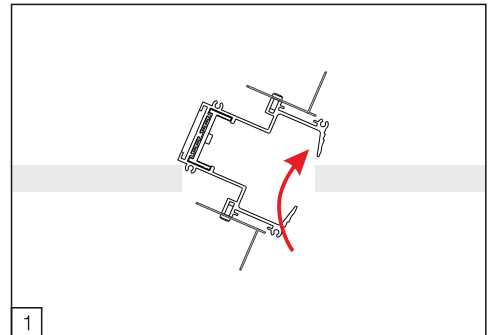
Trimless Recessed



Pendant



Trimless Recessed Installations



NEKO / MODULINE Linear System
 48V Low Voltage Modular Linear System
 Trimless System

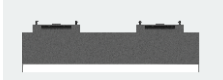


Short Info

- 48V low voltage system
- Track Rail made of extruded aluminium with 36mm width groove
- Suitable for trimless installation in ceilings with 1-40mm thickness
- Track Rail available with standard lengths 3000mm and 1000mm
- 'L' shape corner module available for flexible system
- Linear Connector and Continuous Kit provided for continuous Track Rail connection
- Various lighting insets with multiple lighting applications, Tool-free insert mounting by clip-in mechanism
- Insets available with Non Dim and 1-10V Dim

Insets

General Light
 • Page 174



Accent Light
 • Page 175



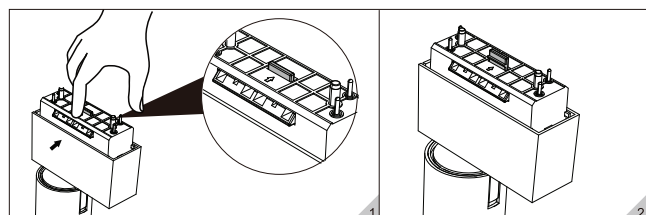
Spotlight
 • Page 176



Pendant Spotlight
 • Page 177



Features



•Insets with clip-in mechanism

Short Info

MODULINE trimless recessed system

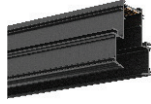
Electrical

Non Dim

1-10V Dim

Fixture Colour

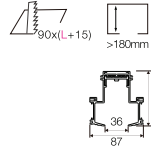
Black



MODULINE trimless recessed system

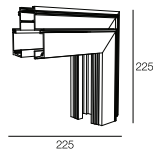
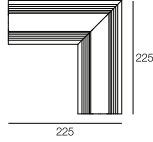
Please order installation track rail, light insets and mounting accessories separately.

Trimless Installation Track Rail



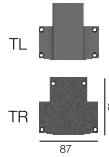
L (mm)	Description	Code/ Model
1000	Track Rail	ML35-TR1000
3000	Track Rail	ML35-TR3000
200*200	'L' shape corner module-horizontal	ML35-CM-R
200*200	'L' shape corner module-vertical	ML35-CM-RV

*Track Rail including endcaps.



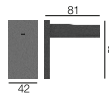
Accessories

Endcap



Description	Code/ Model
At the side with Power Feeder Unit	ML35-Endcap-TL
At the side without Power Feeder Unit	ML35-Endcap-TR

Power Feeder Unit



Description	Code/ Model
Power Feeder Unit with feeder cables 500mm	ML35-Endcap E-R

Track Rail Wires Cover



Description	Code/ Model
Track Rail Wires Cover 925mm	ML35-RC1000
Track Rail Wires Cover 2925mm	ML35-RC3000

*Wires cover can be shortened as desired.

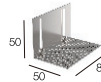
Connector Set



Description	Code/ Model
Linear Connector with screws	ML35-LC
Continuous Kit, Electrical	ML35-CK

*Need to be used together as a set.

Trimless Installation Kit



Description	Code/ Model
Trimless installation kit, 2pcs/ set. 1 set for per meter Track Rail length.	ML35-TIK

NEKO / MODULINE Linear System
 48V Low Voltage Modular Linear System
 Surface Mounted System



Short Info

- 48V low voltage system
- Track Rail made of extruded aluminium with 36mm width groove
- Suitable for surface mounted or suspended with 1500mm steel cable
- Track Rail available with standard lengths 3000mm and 1000mm
- 'L' shape corner module available for flexible system
- Linear Connector and Continuous Kit provided for continuous Track Rail connection
- Various lighting insets with multiple lighting applications, Tool-free insert mounting by clip-in mechanism
- Insets available with Non Dim and 1-10V Dim

Insets

General Light
 • Page 174



Accent Light
 • Page 175



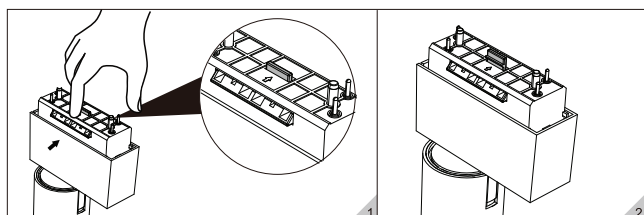
Spotlight
 • Page 176



Pendant Spotlight
 • Page 177



Features



•Insets with clip-in mechanism

Short Info

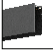
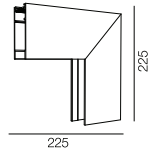
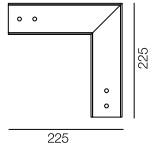
MODULINE surface mounted system

Electrical

Non Dim
1-10V Dim

Fixture Colour

Black

MODULINE surface mounted system

Please order installation track rail, light insets and mounting accessories separately.

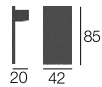
Surface mounted Installation Track Rail

L (mm)	Description	Code/ Model
1000	Track Rail	ML35-R1000
3000	Track Rail	ML35-R3000
200*200	'L' shape corner module-horizontal	ML35-CM-S
200*200	'L' shape corner module-vertical	ML35-CM-SV

*Track Rail including endcaps.

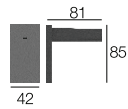
Accessories

Endcap



Description	Code/ Model
At the side without Power Feeder Unit	ML35-Endcap

Power Feeder Unit



Description	Code/ Model
Power Feeder Unit with feeder cables 500mm for surface mounted	ML35-Endcap E-R
Power Feeder Unit with feeder cables 2000mm for suspended	ML35-Endcap E-P

Track Rail Wires Cover



Description	Code/ Model
Track Rail Wires Cover 925mm	ML35-RC1000
Track Rail Wires Cover 2925mm	ML35-RC3000

*Wires cover can be shortened as desired.

Connector Set



Description	Code/ Model
Linear Connector with screws	ML35-LC
Continuous Kit, Electrical	ML35-CK

*Need to be used together as a set.

Installation Kit



Description	Code/ Model
Surface mounted installation kit 1000mm/pcs	ML35-SMK

NEKO / MODULINE Linear System
48V Low Voltage Modular Linear System
Suspended System

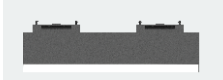


Short Info

- 48V low voltage system
- Track Rail made of extruded aluminium with 36mm width groove
- Suitable for surface mounted or suspended with 1500mm steel cable
- Track Rail available with standard lengths 3000mm and 1000mm
- 'L' shape corner module available for flexible system
- Linear Connector and Continuous Kit provided for continuous Track Rail connection
- Various lighting insets with multiple lighting applications, Tool-free insert mounting by clip-in mechanism
- Insets available with Non Dim and 1-10V Dim

Insets

General Light
• Page 174



Accent Light
• Page 175



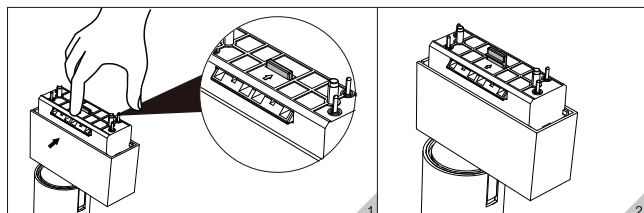
Spotlight
• Page 176



Pendant Spotlight
• Page 177



Features



Insets with clip-in mechanism

Short Info

MODULINE suspended system

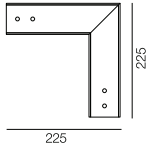
Electrical

Non Dim

1-10V Dim

Fixture Colour

Black



MODULINE suspended system

Please order installation track rail, light insets and mounting accessories separately.

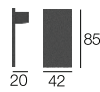
Suspended Installation Track Rail

L (mm)	Description	Code/ Model
1000	Track Rail	ML35-R1000
3000	Track Rail	ML35-R3000
200*200	'L' shape corner module	ML35-CM-S

*Track Rail including endcaps.

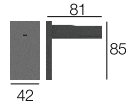
Accessories

Endcap



Description	Code/ Model
At the side without Power Feeder Unit	ML35-Endcap

Power Feeder Unit



Description	Code/ Model
Power Feeder Unit with feeder cables 500mm for surface mounted	ML35-Endcap E-R
Power Feeder Unit with feeder cables 2000mm for suspended	ML35-Endcap E-P

Track Rail Wires Cover



Description	Code/ Model
Track Rail Wires Cover 925mm	ML35-RC1000
Track Rail Wires Cover 2925mm	ML35-RC3000

*Wires cover can be shortened as desired.

Connector Set



Description	Code/ Model
Linear Connector with screws	ML35-LC
Continuous Kit, Electrical	ML35-CK

*Need to be used together as a set.

Installation Kit



Description	Code/ Model
Suspension installation kit with 1500mm steel cable 2pcs/ set	ML35-PK