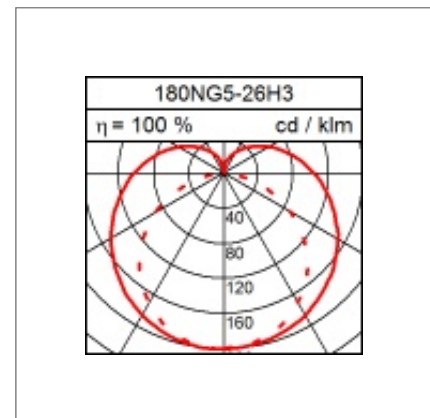
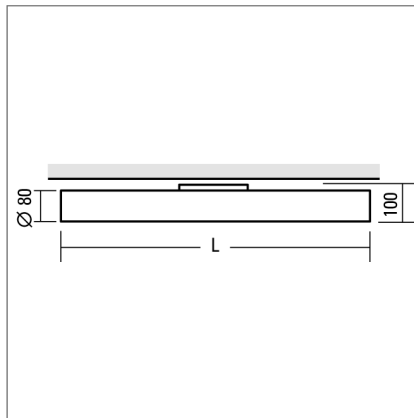
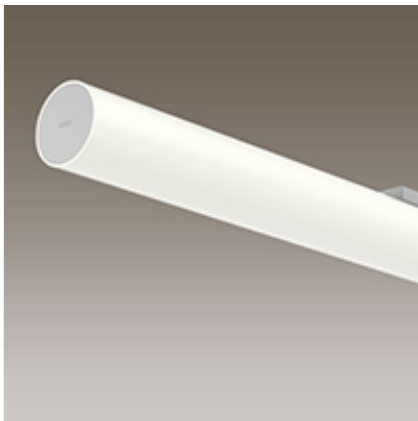



## Technical Data

### Ceiling mounted luminaire LEAN

30.2W LED, 3169 Lumen, 3000 Kelvin. IP50. L=1770mm. Cover tube made of diffuse satinated acrylic glass. Ceiling console and end caps coloured in nickel silver naced. Light output intermediate. With electronic ballast. CRI >90.



### Product data

Item number	180NG5-26H3
Dimensions	L=1770 / H=100 / Ø=80
Lamp	LED
Equipment	26.6W
System output	30.2W
Ballast	
Assemblypoints Distance	
Weight	
Symbols	IP50   

### Light data

Optical Light Output Ratio	82.0 %
Light direct/non direct Ratio	
Absolute luminous flux (Basis: Light source 840)	3169 lm
Luminaire light output (lm/W)	105

### Glare rating UGR

X=4H, Y=8H, S=0,25H  
Deg. of reflection 70/50/20

Perpendicular Zero  
Perpendicular Ninty