

LED Tracklight FOCUS M-42W-940-18D



Light Output Ratio:	100.0%	
Luminaire Power:	41.65 W	
SHR Nominal:	0.00	Calculated using the TM5
SHR Maximum:	1.00	fine grid method.

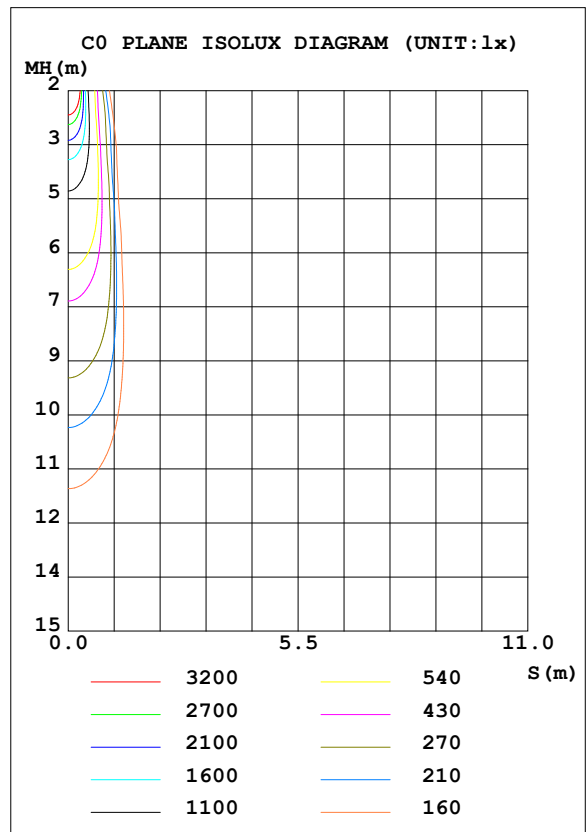
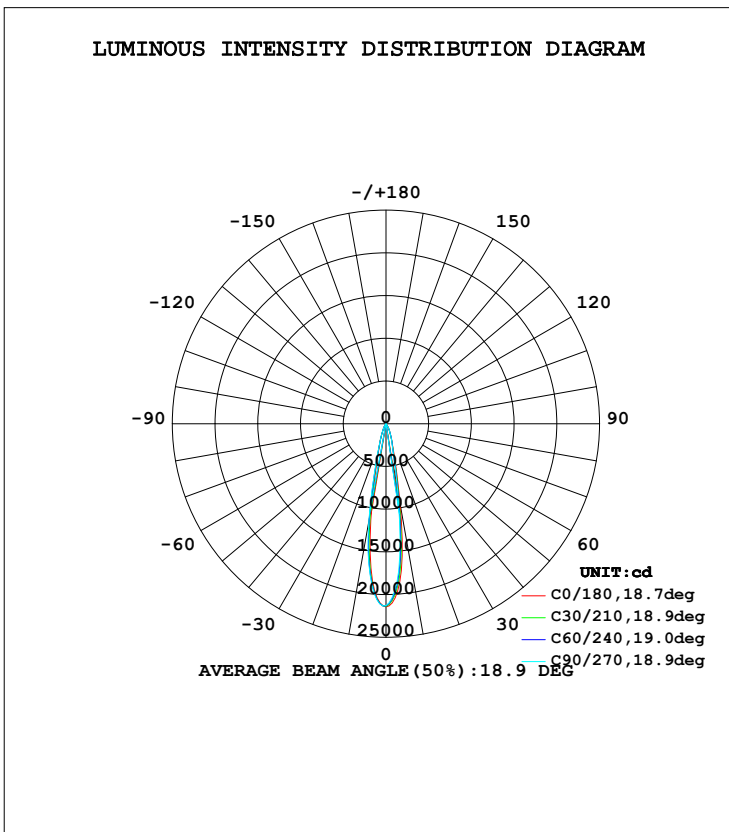
C Range: 0 - 360DEG
C Interval: 15.0DEG
Test Speed: HIGH
Temperature: 25.3DEG
Operators: Meng Yongjian
Test Date: 2017-08-07

γ Range: 0 - 90DEG
 γ Interval: 1.0DEG
Test System: EVERFINE GO-2000B_V1 SYSTEM V2.0.288
Humidity: 52%
Test Distance: 5.850m [K=1.0000]
Remarks:

LUMINAIRE PHOTOMETRIC TEST REPORT

Test:U:220.7V I:0.2002A P:41.65W PF:0.9428 Lamp Flux:3236.71x1 lm		
NAME: FOCUS M-42W-940-18D	TYPE:Tracklight	SERIAL No.:
SPEC.:4000K	DIM.: φ90mm*H220mm	
MFR.: NEKO LIGHTING AG		

DATA OF LAMP		PHOTOMETRIC DATA			
MODEL	CITIZEN-4000K	Imax (cd)	21430	S/MH (C0/180)	0.31
NOMINAL POWER (W)	42	LOR (%)	100.0	S/MH (C90/270)	0.34
RATED VOLTAGE (V)	220	TOTAL FLUX (lm)	3236.7	η UP, DN (C0-180)	0.0, 47.4
NOMINAL FLUX (lm)	3236.71	CIE CLASS	DIRECT	η UP, DN (C180-360)	0.0, 52.6
LAMPS INSIDE	1	η up (%)	0.0	CIBSE SHR NOM	0.00
TEST VOLTAGE (V)	220	η down (%)	100.0	CIBSE SHR MAX	1.00



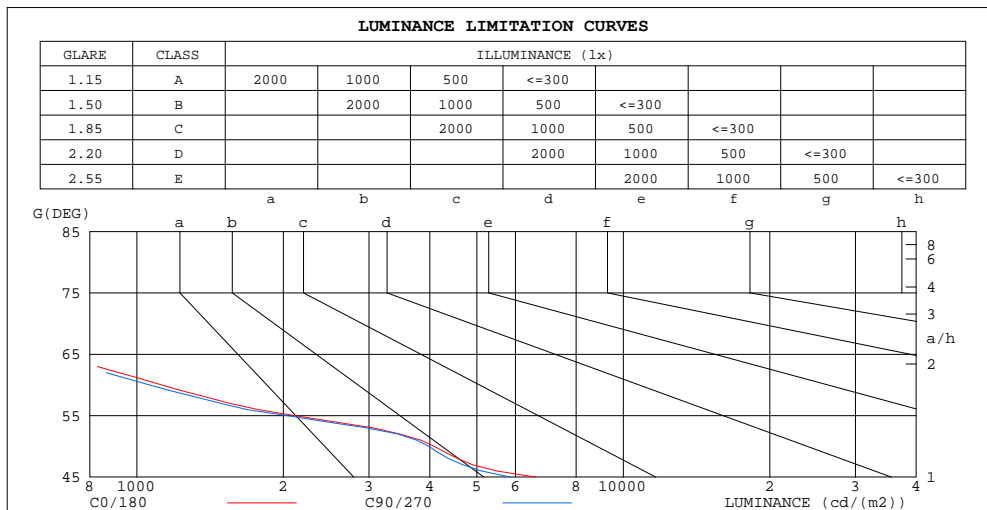
C Range: 0 - 360DEG
 C Interval: 15.0DEG
 Test Speed: HIGH
 Temperature:25.3DEG
 Operators:Meng Yongjian
 Test Date:2017-08-07

γ Range: 0 - 90DEG
 γ Interval: 1.0DEG
 Test System:EVERFINE GO-2000B_V1 SYSTEM V2.0.288
 Humidity:52%
 Test Distance:5.850m [K=1.0000]
 Remarks:

**ZONAL FLUX DIAGRAM
AND LUMINANCE LIMITATION CURVES**

ZONAL FLUX DIAGRAM:

γ	C0	C45	C90	C135	C180	C225	C270	C315	γ	Φ zone	Φ total	$\#lum, lamp$
10	950.7	858.7	781.1	812.3	947.8	1067	1161	1085	0- 10	1452	1452	44.9,44.9
20	185.9	191.8	183.7	178.6	180.5	178.4	184.3	186.6	10- 20	1114	2566	79.3,79.3
30	57.66	59.06	56.22	54.62	53.93	50.45	52.73	53.79	20- 30	473.3	3039	93.9,93.9
40	8.209	6.897	6.639	6.587	8.002	9.428	10.64	10.10	30- 40	158.5	3198	98.8,98.8
50	1.670	1.616	1.630	1.646	1.695	1.555	1.550	1.663	40- 50	28.52	3226	99.7,99.7
60	0.3576	0.3208	0.3372	0.4539	0.3690	0.3774	0.4270	0.4119	50- 60	7.991	3234	99.9,99.9
70	0.0579	0.0483	0.0473	0.0474	0.0542	0.0662	0.0768	0.0673	60- 70	1.948	3236	100,100
80	0.0230	0.0184	0.0208	0.0179	0.0192	0.0243	0.0247	0.0247	70- 80	0.3749	3237	100,100
90	0.0131	0.0133	0.0142	0.0136	0.0092	0.0090	0.0092	0.0092	80- 90	0.1638	3237	100,100
100									90-100			
110									100-110			
120									110-120			
130									120-130			
140									130-140			
150									140-150			
160									150-160			
170									160-170			
180									170-180			
DEG	LUMINOUS INTENSITY: $\times 10cd$									UNIT: lm		



LUMINANCE cd/(m2)		
G (DEG)	C0/180	C90/270
85	300	288
80	208	188
75	214	177
70	266	217
65	677	629
60	1125	1061
55	2116	2041
50	4087	3988
45	6603	5872

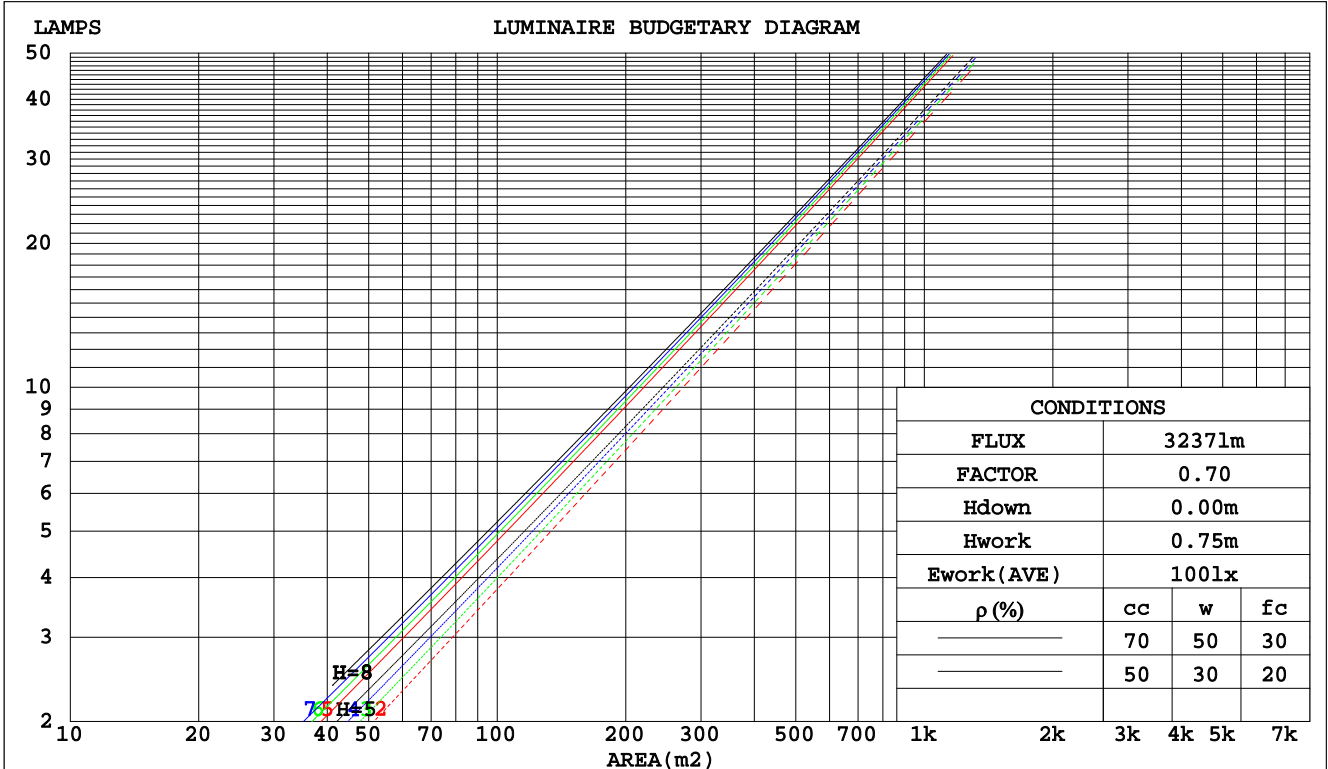
C Range: 0 - 360DEG
C Interval: 15.0DEG
Test Speed: HIGH
Temperature: 25.3DEG
Operators: Meng Yongjian
Test Date: 2017-08-07

γ Range: 0 - 90DEG
 γ Interval: 1.0DEG
Test System: EVERFINE GO-2000B_V1 SYSTEM V2.0.288
Humidity: 52%
Test Distance: 5.850m [K=1.0000]
Remarks:

CU AND LUMINAIRE BUDGETARY ESTIMATE DIAGRAM

Test:U:220.7V I:0.2002A P:41.65W PF:0.9428 Lamp Flux:3236.71x1 lm		
NAME: FOCUS M-42W-940-18D	TYPE:Tracklight	SERIAL No.:
SPEC.:4000K	DIM.: φ90mm*H220mm	
MFR.: NEKO LIGHTING AG		

ρcc	80%			70%			50%			30%			10%			0
ρw	50%	30%	10%	50%	30%	10%	50%	30%	10%	50%	30%	10%	50%	30%	10%	0
ρfc	20%			20%			20%			20%			20%			0
RCR	RCR:Room Cavity Ratio															
	Coefficients of Utilization(CU)															
0.0	1.19	1.19	1.19	1.16	1.16	1.16	1.11	1.11	1.11	1.06	1.06	1.06	1.02	1.02	1.02	.00
1.0	1.13	1.11	1.10	1.11	1.09	1.08	1.07	1.06	1.05	1.03	1.02	1.02	1.00	.99	.99	.97
2.0	1.08	1.05	1.03	1.06	1.04	1.02	1.03	1.01	.00	1.01	.99	.97	.98	.97	.95	.94
3.0	1.04	1.00	.98	1.02	.99	.97	1.00	.97	.95	.98	.96	.94	.96	.94	.93	.91
4.0	.00	.96	.93	.99	.95	.93	.97	.94	.92	.95	.93	.91	.93	.91	.90	.89
5.0	.97	.93	.90	.96	.92	.89	.94	.91	.89	.93	.90	.88	.91	.89	.87	.86
6.0	.94	.90	.87	.93	.89	.87	.92	.88	.86	.90	.88	.85	.89	.87	.85	.84
7.0	.91	.87	.84	.90	.87	.84	.89	.86	.84	.88	.85	.83	.87	.85	.83	.82
8.0	.88	.84	.82	.88	.84	.82	.87	.84	.81	.86	.83	.81	.85	.83	.81	.80
9.0	.86	.82	.80	.86	.82	.80	.85	.82	.79	.84	.81	.79	.83	.81	.79	.78
10.0	.84	.80	.78	.84	.80	.78	.83	.80	.77	.82	.79	.77	.82	.79	.77	.76



C Range: 0 - 360DEG
C Interval: 15.0DEG
Test Speed: HIGH
Temperature:25.3DEG
Operators:Meng Yongjian
Test Date:2017-08-07

γ Range: 0 - 90DEG
γ Interval: 1.0DEG
Test System:EVERFINE GO-2000B_V1 SYSTEM V2.0.288
Humidity:52%
Test Distance:5.850m [K=1.0000]
Remarks:

WEC AND CCEC

Test:U:220.7V I:0.2002A P:41.65W PF:0.9428 Lamp Flux:3236.71x1 lm		
NAME: FOCUS M-42W-940-18D	TYPE:Tracklight	SERIAL No.:
SPEC.:4000K	DIM.: φ90mm*H220mm	
MFR.: NEKO LIGHTING AG		

ρcc	80%			70%			50%			30%			10%			0
ρw	50%	30%	10%	50%	30%	10%	50%	30%	10%	50%	30%	10%	50%	30%	10%	0
ρfc	20%			20%			20%			20%			20%			0
RCR	RCR:Room Cavity Ratio						Wall Exitance Coefficients(WEC)									
0.0																
1.0	.132	.075	.024	.125	.071	.023	.113	.065	.021	.102	.059	.019	.091	.053	.017	
2.0	.122	.067	.021	.117	.064	.020	.106	.059	.018	.097	.054	.017	.088	.050	.016	
3.0	.113	.060	.018	.109	.058	.018	.100	.054	.017	.093	.051	.016	.085	.047	.015	
4.0	.106	.055	.016	.102	.054	.016	.095	.050	.015	.089	.048	.014	.082	.045	.014	
5.0	.100	.051	.015	.096	.050	.014	.090	.047	.014	.085	.045	.013	.080	.043	.013	
6.0	.094	.047	.014	.091	.046	.013	.086	.044	.013	.081	.042	.012	.077	.040	.012	
7.0	.089	.044	.012	.087	.043	.012	.082	.042	.012	.078	.040	.012	.074	.039	.011	
8.0	.085	.041	.012	.083	.041	.012	.079	.039	.011	.075	.038	.011	.072	.037	.011	
9.0	.081	.039	.011	.079	.039	.011	.076	.037	.011	.072	.036	.010	.069	.035	.010	
10.0	.077	.037	.010	.076	.037	.010	.073	.036	.010	.070	.035	.010	.067	.034	.010	

ρcc	80%			70%			50%			30%			10%			0
ρw	50%	30%	10%	50%	30%	10%	50%	30%	10%	50%	30%	10%	50%	30%	10%	0
ρfc	20%			20%			20%			20%			20%			0
RCR	RCR:Room Cavity Ratio						Ceiling Cavity Exitance Coefficients(CCEC)									
0.0	.190	.190	.190	.163	.163	.163	.111	.111	.111	.064	.064	.064	.020	.020	.020	
1.0	.168	.158	.148	.144	.135	.128	.098	.093	.088	.057	.054	.051	.018	.017	.017	
2.0	.150	.133	.119	.128	.114	.102	.088	.079	.071	.051	.046	.042	.016	.015	.014	
3.0	.134	.113	.096	.115	.098	.084	.079	.068	.059	.046	.040	.035	.015	.013	.011	
4.0	.122	.098	.080	.104	.085	.069	.072	.059	.049	.041	.034	.029	.013	.011	.009	
5.0	.111	.085	.067	.095	.074	.058	.066	.052	.041	.038	.030	.024	.012	.010	.008	
6.0	.102	.075	.056	.087	.065	.049	.060	.046	.035	.035	.027	.021	.011	.009	.007	
7.0	.094	.067	.048	.081	.058	.042	.056	.041	.030	.032	.024	.018	.010	.008	.006	
8.0	.087	.060	.042	.075	.052	.036	.052	.037	.026	.030	.022	.015	.010	.007	.005	
9.0	.082	.054	.036	.070	.047	.032	.049	.033	.022	.028	.020	.013	.009	.006	.004	
10.0	.077	.050	.032	.066	.043	.028	.046	.030	.020	.027	.018	.012	.009	.006	.004	

C Range: 0 - 360DEG
 C Interval: 15.0DEG
 Test Speed: HIGH
 Temperature:25.3DEG
 Operators:Meng Yongjian
 Test Date:2017-08-07

γ Range: 0 - 90DEG
 γ Interval: 1.0DEG
 Test System:EVERFINE GO-2000B_V1 SYSTEM V2.0.288
 Humidity:52%
 Test Distance:5.850m [K=1.0000]
 Remarks:

UGR(Unified Glare Rating) Table

Test:U:220.7V I:0.2002A P:41.65W PF:0.9428 Lamp Flux:3236.71x1 lm		
NAME: FOCUS M-42W-940-18D	TYPE:Tracklight	SERIAL No.:
SPEC.:4000K	DIM.: φ90mm*H220mm	
MFR.: NEKO LIGHTING AG		

ceiling/cavity	0.7	0.7	0.5	0.5	0.3	0.7	0.7	0.5	0.5	0.3
walls	0.5	0.3	0.5	0.3	0.3	0.5	0.3	0.5	0.3	0.3
working plane	0.2	0.2	0.2	0.2	0.2	0.2	0.2	0.2	0.2	0.2
Room dimensions	Viewed crosswise					Viewed endwise				
x = 2H y = 2H	12.0	12.6	12.2	12.8	12.9	11.5	12.1	11.7	12.3	12.4
3H	11.9	12.4	12.1	12.6	12.8	11.4	11.9	11.6	12.1	12.3
4H	11.8	12.3	12.0	12.5	12.8	11.3	11.8	11.5	12.0	12.2
6H	11.7	12.2	12.0	12.5	12.7	11.2	11.7	11.5	11.9	12.2
8H	11.7	12.2	12.0	12.4	12.7	11.1	11.7	11.4	11.9	12.1
12H	11.6	12.1	11.9	12.4	12.6	11.1	11.6	11.4	11.8	12.1
4H 2H	11.8	12.3	12.0	12.6	12.8	11.3	11.8	11.5	12.0	12.2
3H	11.6	12.1	11.9	12.4	12.6	11.1	11.6	11.4	11.9	12.1
4H	11.5	12.0	11.9	12.3	12.6	11.0	11.5	11.4	11.8	12.0
6H	11.4	11.8	11.8	12.2	12.5	10.9	11.3	11.3	11.6	12.0
8H	11.4	11.7	11.8	12.1	12.5	10.9	11.2	11.2	11.6	11.9
12H	11.3	11.7	11.7	12.0	12.4	10.8	11.1	11.2	11.5	11.9
8H 4H	11.4	11.7	11.8	12.1	12.4	10.9	11.2	11.2	11.6	11.9
6H	11.3	11.6	11.7	12.0	12.4	10.7	11.1	11.2	11.4	11.9
8H	11.2	11.5	11.6	11.9	12.3	10.7	11.0	11.1	11.4	11.8
12H	11.1	11.4	11.6	11.8	12.3	10.6	10.9	11.1	11.3	11.8
12H 4H	11.3	11.7	11.7	12.0	12.4	10.8	11.1	11.2	11.5	11.9
6H	11.2	11.5	11.6	11.9	12.3	10.7	11.0	11.1	11.4	11.8
8H	11.1	11.4	11.6	11.8	12.3	10.6	10.9	11.1	11.3	11.8
Variations with the observer position at spacings:										
S = 1.0H	+ 4.2 / -11.8					+ 4.0 / -11.0				
1.5H	+ 6.5 / - 9.1					+ 6.1 / - 8.5				
2.0H	+ 5.2 / - 7.1					+ 4.7 / - 7.5				

CIE Pub.117 Corrected 3237 lm Total Lamp Luminous Flux.(8log(F/F0) = 4.1)

C Range: 0 - 360DEG
 C Interval: 15.0DEG
 Test Speed: HIGH
 Temperature:25.3DEG
 Operators:Meng Yongjian
 Test Date:2017-08-07

γ Range: 0 - 90DEG
 γ Interval: 1.0DEG
 Test System:EVERFINE GO-2000B_V1 SYSTEM V2.0.288
 Humidity:52%
 Test Distance:5.850m [K=1.0000]
 Remarks:

UTILIZATION FACTORS TABLE

Test:U:220.7V I:0.2002A P:41.65W PF:0.9428 Lamp Flux:3236.71x1 lm		
NAME: FOCUS M-42W-940-18D	TYPE:Tracklight	SERIAL No.:
SPEC.:4000K	DIM.: φ90mm*H220mm	
MFR.: NEKO LIGHTING AG		

REFLECTANCE										
Ceiling	0.8	0.8	0.8	0.7	0.7	0.7	0.5	0.5	0.5	0
Walls	0.7	0.5	0.3	0.7	0.5	0.3	0.7	0.5	0.3	0
Working plane	0.2	0.2	0.2	0.2	0.2	0.2	0.2	0.2	0.2	0
ROOM INDEX	UTILIZATION FACTORS(PERCENT) $k(RI) \times RCR = 5$									
k = 0.60	91	85	82	90	85	82	90	85	81	78
0.80	98	93	89	97	92	89	96	92	89	85
1.00	102	97	93	101	96	93	99	96	93	89
1.25	105	100	97	104	100	97	102	99	96	92
1.50	108	103	100	106	103	100	104	101	99	95
2.00	110	106	103	108	105	102	106	103	101	96
2.50	111	108	105	110	107	104	107	104	102	97
3.00	113	110	107	111	108	106	108	105	104	98
4.00	115	112	110	112	110	109	109	107	106	99
5.00	116	114	112	114	112	110	110	108	107	100
ROOM INDEX	UF(total)									Direct
According to DIN EN 13032-2 2004			Suspended				SHRNOM = 1.25			

C Range: 0 - 360DEG
 C Interval: 15.0DEG
 Test Speed: HIGH
 Temperature:25.3DEG
 Operators:Meng Yongjian
 Test Date:2017-08-07

γ Range: 0 - 90DEG
 γ Interval: 1.0DEG
 Test System:EVERFINE GO-2000B_V1 SYSTEM V2.0.288
 Humidity:52%
 Test Distance:5.850m [K=1.0000]
 Remarks:

ISOCANDELA DIAGRAM

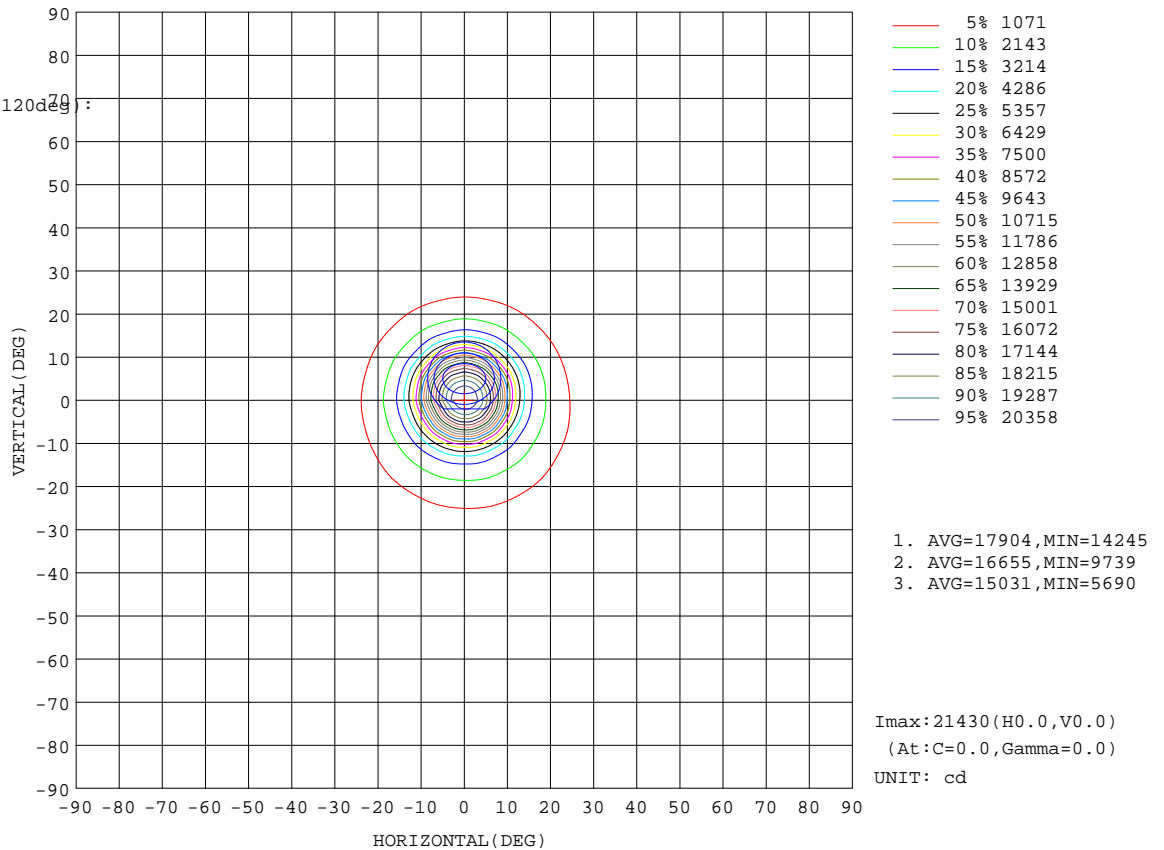
Test:U:220.7V I:0.2002A P:41.65W PF:0.9428 Lamp Flux:3236.71x1 lm		
NAME: FOCUS M-42W-940-18D	TYPE:Tracklight	SERIAL No.:
SPEC.:4000K	DIM.: φ90mm*H220mm	
MFR.: NEKO LIGHTING AG		

Conical surface Flux(90deg):

3217.8 lm
%lum = 99.4%
%lamp = 99.4%

Conical surface Flux(120deg):

3234.2 lm
%lum = 99.9%
%lamp = 99.9%

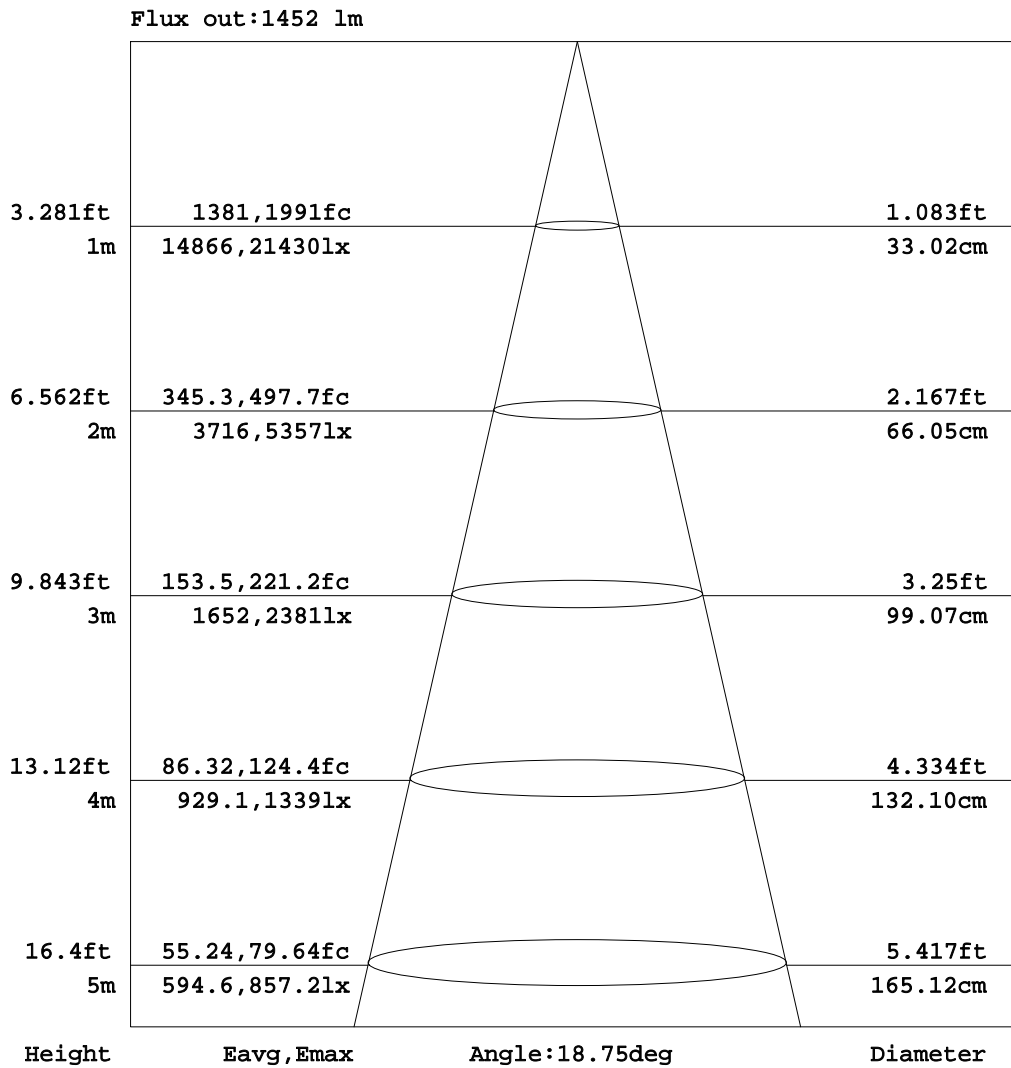


C Range: 0 - 360DEG
C Interval: 15.0DEG
Test Speed: HIGH
Temperature: 25.3DEG
Operators: Meng Yongjian
Test Date: 2017-08-07

γ Range: 0 - 90DEG
γ Interval: 1.0DEG
Test System: EVERFINE GO-2000B_V1 SYSTEM V2.0.288
Humidity: 52%
Test Distance: 5.850m [K=1.0000]
Remarks:

AAI Figure

Test:U:220.7V I:0.2002A P:41.65W PF:0.9428 Lamp Flux:3236.71x1 lm		
NAME: FOCUS M-42W-940-18D	TYPE:Tracklight	SERIAL No.:
SPEC.:4000K	DIM.: φ90mm*H220mm	
MFR.: NEKO LIGHTING AG		



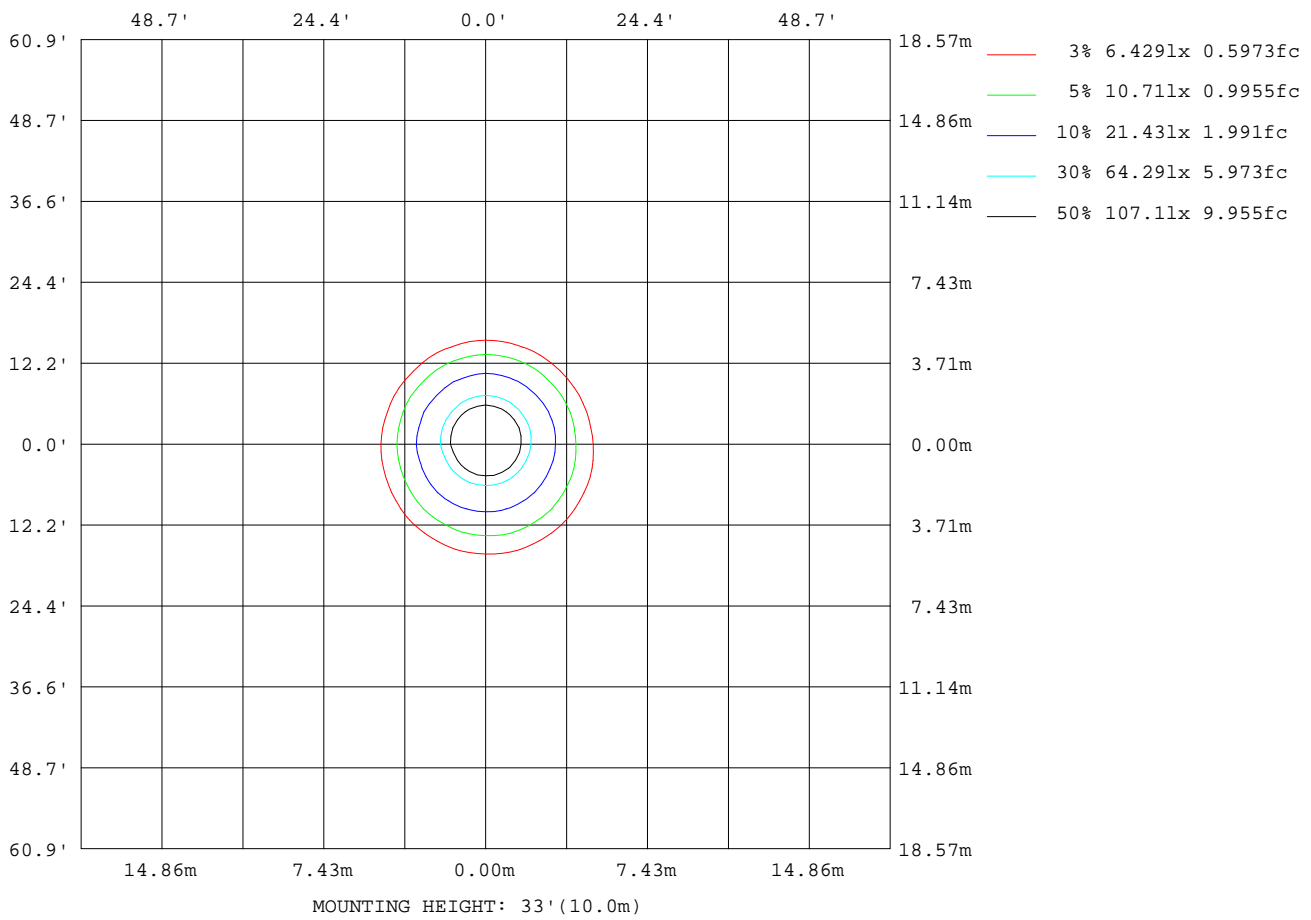
Note:The Curves indicate the illuminated area and the average illumination when the luminaire is at different distance.

C Range: 0 - 360DEG
C Interval: 15.0DEG
Test Speed: HIGH
Temperature:25.3DEG
Operators:Meng Yongjian
Test Date:2017-08-07

γ Range: 0 - 90DEG
γ Interval: 1.0DEG
Test System:EVERFINE GO-2000B_V1 SYSTEM V2.0.288
Humidity:52%
Test Distance:5.850m [K=1.0000]
Remarks:

ISOLUX DIAGRAM

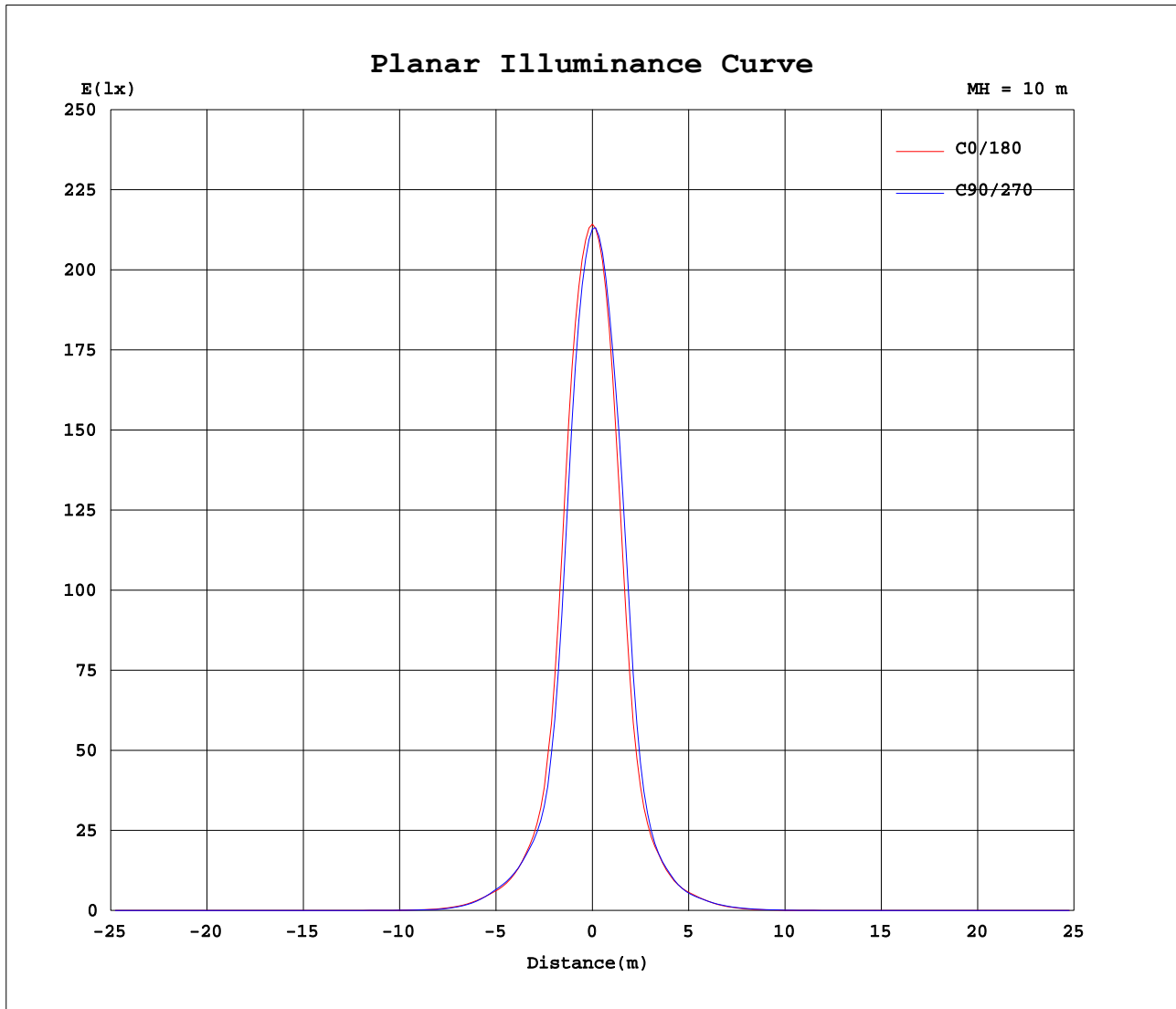
Test:U:220.7V I:0.2002A P:41.65W PF:0.9428 Lamp Flux:3236.71x1 lm		
NAME: FOCUS M-42W-940-18D	TYPE:Tracklight	SERIAL No.:
SPEC.:4000K	DIM.: φ90mm*H220mm	
MFR.: NEKO LIGHTING AG		



C Range: 0 - 360DEG
C Interval: 15.0DEG
Test Speed: HIGH
Temperature:25.3DEG
Operators:Meng Yongjian
Test Date:2017-08-07

γ Range: 0 - 90DEG
γ Interval: 1.0DEG
Test System:EVERFINE GO-2000B_V1 SYSTEM V2.0.288
Humidity:52%
Test Distance:5.850m [K=1.0000]
Remarks:

Planar Illuminance Curve



C Range: 0 - 360DEG
 C Interval: 15.0DEG
 Test Speed: HIGH
 Temperature: 25.3DEG
 Operators: Meng Yongjian
 Test Date: 2017-08-07

γ Range: 0 - 90DEG
 γ Interval: 1.0DEG
 Test System: EVERFINE GO-2000B_V1 SYSTEM V2.0.288
 Humidity: 52%
 Test Distance: 5.850m [K=1.0000]
 Remarks:

LUMINOUS DISTRIBUTION INTENSITY DATA

Test:U:220.7V I:0.2002A P:41.65W PF:0.9428 Lamp Flux:3236.71x1 lm		
NAME: FOCUS M-42W-940-18D	TYPE:Tracklight	SERIAL No.:
SPEC.:4000K	DIM.: φ90mm*H220mm	
MFR.: NEKO LIGHTING AG		

Table--1

UNIT: ×10cd

γ (DEG) \ C (DEG)	0	15	30	45	60	75	90	105	120	135	150	165	180	195	210	225	240	255	270
0	2143	2140	2137	2136	2132	2131	2128	2127	2124	2124	2119	2120	2143	2140	2137	2136	2132	2131	2128
5	1859	1840	1805	1793	1755	1748	1720	1726	1720	1741	1747	1766	1839	1848	1869	1866	1884	1878	1894
10	951	927	870	859	812	813	781	796	786	812	819	857	948	976	1049	1067	1135	1132	1161
15	356	347	329	330	317	319	311	317	319	329	328	337	357	360	380	377	398	394	413
20	186	189	188	192	188	189	184	182	179	179	175	175	180	181	183	178	182	179	184
25	101	106	107	110	110	110	108	106	103	101	96.2	93.8	93.8	90.5	90.7	89.0	91.1	90.2	92.8
30	57.7	59.3	58.7	59.1	58.2	57.8	56.2	55.6	54.3	54.6	53.2	53.0	53.9	51.8	51.6	50.4	51.6	51.2	52.7
35	24.4	24.4	23.1	23.1	21.7	21.8	20.9	21.4	20.8	21.7	21.1	21.9	23.2	22.9	23.5	23.3	24.2	24.2	25.3
40	8.21	7.78	7.03	6.90	6.72	6.56	6.64	6.38	6.55	6.59	6.60	7.01	8.00	8.33	9.14	9.43	10.00	10.1	10.6
45	2.97	3.00	2.78	2.84	2.72	2.76	2.64	2.67	2.55	2.59	2.57	2.74	2.99	2.94	3.25	3.36	3.51	3.48	3.77
50	1.67	1.64	1.63	1.62	1.58	1.64	1.63	1.64	1.65	1.65	1.67	1.74	1.69	1.58	1.58	1.55	1.52	1.50	1.55
55	0.77	0.78	0.77	0.77	0.72	0.74	0.74	0.77	0.76	0.81	0.74	0.81	0.80	0.78	0.87	0.83	0.88	0.86	0.90
60	0.36	0.37	0.34	0.32	0.31	0.32	0.34	0.37	0.43	0.45	0.38	0.37	0.37	0.35	0.38	0.38	0.40	0.40	0.43
65	0.18	0.19	0.17	0.16	0.15	0.16	0.17	0.19	0.20	0.23	0.19	0.19	0.19	0.18	0.19	0.19	0.20	0.20	0.22
70	0.06	0.06	0.05	0.05	0.05	0.04	0.05	0.05	0.05	0.05	0.05	0.05	0.05	0.06	0.06	0.07	0.07	0.07	0.08
75	0.04	0.03	0.03	0.03	0.03	0.03	0.03	0.03	0.03	0.03	0.03	0.03	0.03	0.04	0.04	0.04	0.04	0.04	0.04
80	0.02	0.02	0.02	0.02	0.02	0.02	0.02	0.02	0.02	0.02	0.02	0.02	0.02	0.02	0.02	0.02	0.02	0.03	0.02
85	0.02	0.01	0.02	0.01	0.02	0.01	0.02	0.01	0.01	0.01	0.01	0.01	0.01	0.01	0.01	0.01	0.01	0.02	0.01
90	0.01	0.01	0.01	0.01	0.01	0.01	0.01	0.01	0.01	0.01	0.01	0.01	0.01	0.01	0.01	0.01	0.01	0.01	0.01

C Range: 0 - 360DEG
 C Interval: 15.0DEG
 Test Speed: HIGH
 Temperature:25.3DEG
 Operators:Meng Yongjian
 Test Date:2017-08-07

γ Range: 0 - 90DEG
 γ Interval: 1.0DEG
 Test System:EVERFINE GO-2000B_V1 SYSTEM V2.0.288
 Humidity:52%
 Test Distance:5.850m [K=1.0000]
 Remarks:

LUMINOUS DISTRIBUTION INTENSITY DATA

Test:U:220.7V I:0.2002A P:41.65W PF:0.9428 Lamp Flux:3236.71x1 lm		
NAME: FOCUS M-42W-940-18D	TYPE:Tracklight	SERIAL No.:
SPEC.:4000K	DIM.: φ90mm*H220mm	
MFR.: NEKO LIGHTING AG		

Table--2

UNIT: x10cd

C (DEG) \ γ (DEG)	285	300	315	330	345														
0	2127	2124	2124	2119	2120														
5	1889	1891	1885	1882	1868														
10	1136	1135	1085	1068	1009														
15	406	413	399	396	379														
20	184	188	187	190	190														
25	92.0	94.1	93.9	96.4	97.6														
30	52.4	53.8	53.8	55.7	56.4														
35	25.0	25.5	25.1	25.7	25.0														
40	10.4	10.6	10.1	9.84	8.98														
45	3.57	3.71	3.50	3.44	3.05														
50	1.56	1.66	1.66	1.72	1.65														
55	0.89	0.90	0.84	0.92	0.84														
60	0.43	0.42	0.41	0.42	0.38														
65	0.22	0.22	0.21	0.21	0.19														
70	0.08	0.07	0.07	0.07	0.06														
75	0.04	0.04	0.04	0.04	0.04														
80	0.03	0.02	0.02	0.02	0.02														
85	0.02	0.01	0.02	0.01	0.02														
90	0.01	0.01	0.01	0.01	0.01														

C Range: 0 - 360DEG
C Interval: 15.0DEG
Test Speed: HIGH
Temperature:25.3DEG
Operators:Meng Yongjian
Test Date:2017-08-07

γ Range: 0 - 90DEG
γ Interval: 1.0DEG
Test System:EVERFINE GO-2000B_V1 SYSTEM V2.0.288
Humidity:52%
Test Distance:5.850m [K=1.0000]
Remarks:

Photometric Data Table [cd]

G/C	0.0	15.0	30.0	45.0	60.0	75.0	90.0	105.0	120.0	135.0
0.0	21430	21402	21372	21356	21319	21305	21276	21275	21239	21238
3.0	20413	20285	20074	20007	19793	19759	19598	19654	19611	19726
6.0	17253	17049	16610	16447	15991	15889	15543	15604	15499	15756
9.0	11517	11295	10641	10548	9975	9980	9571	9763	9611	9934
12.0	6241	6033	5794	5569	5420	5287	5250	5215	5340	5406
15.0	3557	3467	3292	3295	3174	3187	3113	3173	3192	3289
18.0	2381	2374	2329	2351	2307	2315	2269	2277	2274	2304
21.0	1625	1667	1671	1712	1684	1693	1641	1618	1584	1577
24.0	1128	1181	1192	1230	1217	1226	1196	1181	1142	1125
27.0	829.4	874.1	880.1	905.5	899.9	905.7	881.1	874.0	835.4	825.6
30.0	576.6	593.4	586.9	590.6	581.8	577.6	562.2	556.2	542.7	546.2
33.0	354.3	358.8	345.8	346.3	332.1	332.2	320.0	321.3	314.3	321.0
36.0	201.0	199.6	188.2	186.6	174.9	175.7	167.4	171.6	167.9	175.3
39.0	106.0	101.5	92.20	89.99	83.85	82.15	77.25	78.61	76.94	82.75
42.0	57.39	55.77	51.97	51.69	50.79	49.67	48.79	48.86	47.42	49.17
45.0	29.69	30.00	27.77	28.43	27.17	27.64	26.40	26.73	25.53	25.91
48.0	19.44	19.11	18.57	18.72	18.36	19.07	18.60	18.79	18.71	18.80
51.0	15.34	15.13	15.24	14.99	14.51	15.17	15.03	15.04	15.16	14.98
54.0	9.489	9.496	9.605	9.599	8.872	9.319	9.148	9.341	9.140	9.453
57.0	5.380	5.554	5.177	5.029	4.774	4.855	5.149	5.552	5.860	6.394
60.0	3.576	3.704	3.374	3.208	3.081	3.211	3.372	3.739	4.284	4.539
63.0	2.394	2.476	2.238	2.101	2.037	2.158	2.252	2.483	2.850	3.136
66.0	1.562	1.629	1.418	1.336	1.260	1.356	1.426	1.572	1.655	1.859
69.0	0.7567	0.7938	0.6057	0.5591	0.5067	0.5089	0.5445	0.5525	0.5287	0.5568
72.0	0.4599	0.4260	0.4009	0.3714	0.3657	0.3495	0.3679	0.3627	0.3679	0.3561
75.0	0.3524	0.3212	0.3173	0.2862	0.2846	0.2666	0.2911	0.2840	0.2867	0.2710
78.0	0.2692	0.2404	0.2473	0.2185	0.2297	0.2010	0.2363	0.2229	0.2254	0.2054
81.0	0.2144	0.1879	0.1969	0.1683	0.1925	0.1661	0.1947	0.1792	0.1838	0.1661
84.0	0.1751	0.1508	0.1663	0.1399	0.1598	0.1377	0.1619	0.1443	0.1575	0.1334
87.0	0.1466	0.1312	0.1466	0.1356	0.1444	0.1334	0.1465	0.1421	0.1378	0.1290
90.0	0.1312	0.1312	0.1399	0.1334	0.1399	0.1399	0.1421	0.1421	0.1356	0.1356
G/C	150.0	165.0	180.0	195.0	210.0	225.0	240.0	255.0	270.0	285.0
0.0	21193	21197	21430	21372	21356	21319	21305	21276	21275	21239
3.0	19756	19870	20367	20392	20496	20457	20542	20513	20618	20585
6.0	15832	16110	16979	17119	17446	17467	17695	17642	17824	17759
9.0	9972	10451	11431	11734	12396	12630	13137	13202	13478	13259
12.0	5599	5713	6273	6445	6889	7013	7516	7556	7880	7647
15.0	3285	3368	3571	3603	3798	3773	3984	3944	4128	4060
18.0	2273	2272	2326	2298	2348	2318	2392	2361	2433	2404
21.0	1533	1524	1561	1545	1594	1582	1613	1589	1630	1627
24.0	1076	1049	1056	1024	1030	1012	1044	1034	1061	1054
27.0	788.0	770.9	765.6	733.4	725.4	705.1	717.2	712.2	728.9	721.7
30.0	532.2	530.1	539.3	518.4	516.4	504.5	516.1	512.1	527.3	523.6
33.0	314.2	319.4	332.0	324.3	329.0	323.2	333.9	333.7	346.2	343.4
36.0	172.2	178.7	191.7	189.6	197.1	196.0	204.0	204.4	213.3	210.4
39.0	83.53	90.38	102.0	105.2	113.1	115.5	122.9	123.4	129.4	126.5
42.0	48.32	50.83	56.39	58.32	63.52	65.74	68.44	69.73	73.17	71.21
45.0	25.67	27.37	29.91	29.42	32.49	33.57	35.10	34.85	37.68	35.66
48.0	18.84	19.81	19.59	18.53	18.61	18.56	18.34	18.03	18.65	18.49
51.0	15.26	16.12	15.58	14.77	14.81	14.44	14.06	13.85	14.40	14.56
54.0	9.032	10.04	9.660	9.681	10.68	10.18	10.66	10.28	10.74	10.76
57.0	5.586	5.741	5.611	5.336	6.010	5.962	6.122	6.060	6.448	6.398
60.0	3.790	3.658	3.690	3.496	3.759	3.774	4.006	3.987	4.270	4.282
63.0	2.543	2.520	2.475	2.341	2.508	2.535	2.642	2.656	2.879	2.920
66.0	1.593	1.635	1.591	1.522	1.652	1.690	1.762	1.710	1.853	1.894
69.0	0.5899	0.6961	0.7454	0.7210	0.8287	0.8877	0.9419	0.9012	0.9663	0.9801
72.0	0.3833	0.4085	0.4324	0.4662	0.4891	0.5145	0.5393	0.5517	0.5654	0.5627
75.0	0.2999	0.3103	0.3189	0.3523	0.3604	0.3873	0.3932	0.4114	0.4085	0.4114
78.0	0.2363	0.2359	0.2337	0.2670	0.2664	0.2911	0.2883	0.3086	0.3014	0.3108
81.0	0.1903	0.1813	0.1747	0.2035	0.1900	0.2210	0.2096	0.2363	0.2228	0.2341
84.0	0.1597	0.1442	0.1267	0.1510	0.1332	0.1598	0.1441	0.1751	0.1616	0.1729
87.0	0.1356	0.1246	0.0983	0.1160	0.0961	0.1204	0.1027	0.1313	0.1135	0.1291
90.0	0.1268	0.1246	0.0918	0.0896	0.0875	0.0896	0.0853	0.0918	0.0918	0.0918
G/C	300.0	315.0	330.0	345.0						
0.0	21239	21238	21193	21197						
3.0	20592	20533	20477	20400						
6.0	17804	17701	17659	17456						
9.0	13171	12813	12605	12105						
12.0	7653	7307	7133	6712						
15.0	4133	3994	3957	3787						
18.0	2450	2410	2461	2443						
21.0	1656	1639	1664	1649						

C Range: 0 - 360DEG
 C Interval: 15.0DEG
 Test Speed: HIGH
 Temperature: 25.3DEG
 Operators: Meng Yongjian
 Test Date: 2017-08-07

γ Range: 0 - 90DEG
 γ Interval: 1.0DEG
 Test System: EVERFINE GO-2000B_V1 SYSTEM V2.0.288
 Humidity: 52%
 Test Distance: 5.850m [K=1.0000]
 Remarks:

Photometric Data Table [cd]

24.0	1077	1068	1094	1104
27.0	741.7	745.6	770.9	791.0
30.0	538.1	537.9	556.6	563.8
33.0	352.3	349.2	359.8	356.6
36.0	215.7	211.0	214.9	207.1
39.0	130.0	123.8	123.7	114.0
42.0	72.00	69.23	66.63	60.95
45.0	37.10	35.01	34.44	30.51
48.0	19.57	19.63	19.98	19.15
51.0	15.39	15.37	15.96	15.32
54.0	11.06	10.34	11.15	10.30
57.0	6.334	6.173	6.521	5.799
60.0	4.168	4.119	4.200	3.761
63.0	2.838	2.804	2.777	2.511
66.0	1.851	1.815	1.821	1.625
69.0	0.9377	0.9188	0.9437	0.8308
72.0	0.5502	0.5297	0.5087	0.4772
75.0	0.4019	0.3961	0.3692	0.3611
78.0	0.2949	0.2976	0.2708	0.2757
81.0	0.2140	0.2232	0.2009	0.2122
84.0	0.1507	0.1663	0.1441	0.1598
87.0	0.1092	0.1247	0.1048	0.1269
90.0	0.0896	0.0918	0.0896	0.0962

C Range: 0 - 360DEG
 C Interval: 15.0DEG
 Test Speed: HIGH
 Temperature: 25.3DEG
 Operators: Meng Yongjian
 Test Date: 2017-08-07

γ Range: 0 - 90DEG
 γ Interval: 1.0DEG
 Test System: EVERFINE GO-2000B_V1 SYSTEM V2.0.288
 Humidity: 52%
 Test Distance: 5.850m [K=1.0000]
 Remarks: