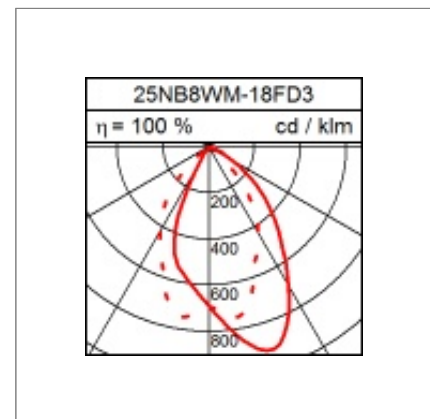
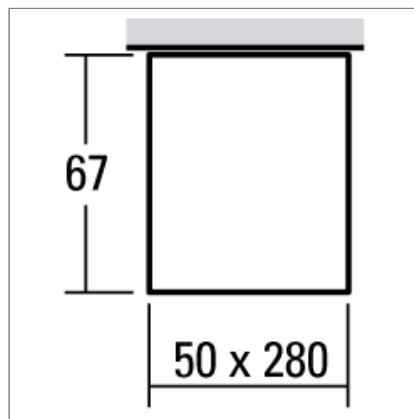
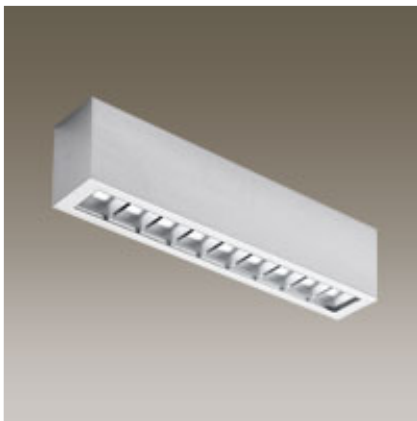




## Technical Data

### Ceiling mounted LED luminaire PIXEL DALI

14.8W LED, 1152 Lumen, 3000 Kelvin. IP30. Satinated acrylic glass. Smoothed aluminium. Asymmetric light distribution. Aluminium casted housing for ceiling montage. With electronic ballast.



### Product data

|                         |   |
|-------------------------|---|
| Item number             | 25NB8WM-18FD3   |
| Dimensions              |   |
| Lamp                    | LED   |
| Equipment               | 19.3W   |
| System output           | 14.8W   |
| Ballast                 |   |
| Assemblypoints Distance |   |
| Weight                  |   |
| Safety signs            | IP30   CE |

### Light data

|                               |             |
|-------------------------------|-------------|
| Optical Light Output Ratio    | 100 %       |
| Light direct/non direct Ratio | 100 % / 0 % |
| Absolute luminous flux        | 1152 lm     |
| Lightoutput (lm/W)            | 77.84       |

### Glare rating UGR

X=4H, Y=8H, S=0,25H  
Deg. of reflection 70/50/20

|                      |      |
|----------------------|------|
| Perpendicular Zero   | 27.5 |
| Perpendicular Ninety | 22.1 |