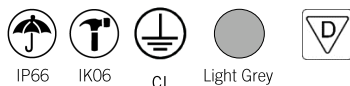


Compact



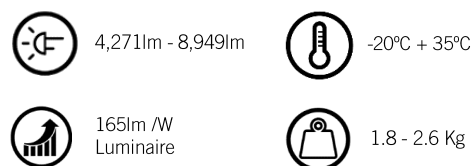
KEY ADVANTAGES

- Designed for the food industry and aggressive environments.
- Tool-free access.
- Mounted on the ceiling or suspended.
- Easy mounting brackets included.
- Energy Efficient: 165 lm/ W.
- Sturdiness: IP66 + IK06
- Lifetime L80B50 100,000 h at 25°C.



DESCRIPTION

Compact LED is Carandini's LED waterproof luminaire designed for the food industry and for aggressive environments. It is a luminaire with high dust and humidity resistance, which makes it ideal as a solution for industrial environments, food processing areas, warehouses, agriculture and other similar areas.



STANDARDS / CERTIFICATES

- CE
- RoHS
- EN 60598-1:2015/ac:2016
- EN 60598-2-1:2014
- EN 61000-3-2 :2014
- UNE-EN 61000-3-3:2013
- UNE-EN 55015:2006+A2:2009
- UNE-EN 61547:2009

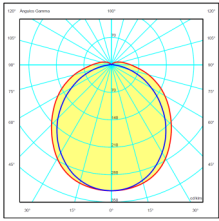
220 - 240V
50-60 Hz
L80B50 100,000 h
Ta 25°C

***Test reports from independent ENAC accredited laboratories or equivalent**

Measurements taken at an ISO 17025 approved laboratory.
Meets the minimum CEI - IDAE requirements

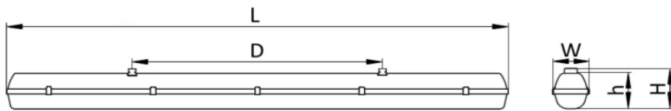
PHOTOMETRIC CONFIGURATIONS

Photometric configuration available for use in various environments where this type of luminaire might be installed, meaning it can be adapted to fit all requirements:



IS80

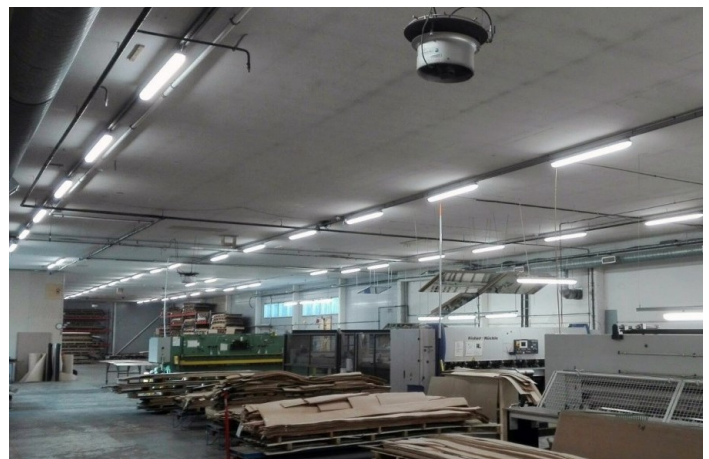
DIMENSIONS



SIZE	L (mm)	W (mm)	H (mm)	D (mm)	h
N	662	96 146	100	350	100
S	1272	96 146		700	
M	1572	96 146		940	

APPLICATIONS

Industrial environments, food processing areas, warehouses, agriculture and other similar areas.



Compact CHARACTERISTICS

GENERAL CHARACTERISTICS

Materials and finishing	Opal acrylic diffuser with high chemical resistance. Thermoplastic body with high chemical resistance. Stainless steel clips. Colour: light grey
General ingress protection	IP66 (EN 60598-1 and EN 60529)
Degree of protection against impacts	IK06 (EN 62262)
Operating temperature	-20 to + 35°C
Glow wire test, ° C	650
Estimated life	L80B50 100,000h at Ta 25°C. Light maintenance values at TM-21 based on LM-80 data. Based on configuration.

ELECTRICAL CHARACTERISTICS

Electrical class	Class I
Input voltage	220 V - 240 V / 50 Hz - 60 Hz
Power factor	> 0.95
Control gear	ECG on/off
Integrated sensor	None
Connection	Terminal push-in, 5x2x2.5mm ²
Overvoltage protection	2kV

MAINTENANCE AND ASSEMBLY

Installation and maintenance	On the ceiling or on the wall (mounting brackets included) or suspended (hooks included).
Equipped weight	1.80Kg-2.10Kg-2.6Kg

LIGHTING CHARACTERISTICS

Real luminous flux	4,271lm - 8,949lm (25.9 to 54.8W).
LED colour temperature	4,000K (Neutral White, nw). 3,000 K (Warm White, ww).
Colour rendering index (CRI)	CRI>80
LEDs	Different versions are provided with 1 or 2 LED strips.
Optics	Opal diffuser with high transmittance
Photometric configurations	IS80
Light distribution	Direct

MANAGEMENT AND CONTROL

Devices	1N: LED 1 level RD: Adjustable LED Protocol DALI EM3: Emergency 3h EM3A: Emergency 3h equipped with independent testing system. S-EM: Without emergency DALI can be combined with emergency 3h (EM3)
---------	---

LOGISTICAL INFORMATION

Size N:

Total weight: 1.98 kg
Quantity included in package: 1
Packaging volume: 0.012873432 m³
Quantity of pieces per pallet: 70

Size S:

Total weight: 2.31 kg
Quantity included in package: 1
Packaging volume: 0.016571192 m³
Quantity of pieces per pallet: 60

Size M:

Total weight: 2.86 kg
Quantity included in package: 1
Packaging volume: 0.020418992 m³
Quantity of pieces per pallet: 60

Environment	Max. Concentration	Resistance test of LED diffuser			Resistance test of LED body		
		YES	Partially	NO	YES	Partially	NO
Acetone				NO			NO
Aniline				NO			NO
Ammonia	5%	YES			YES		
Benzene and benzaldehyde				NO			NO
Diethyl ether (ethers)			Partially				NO
Potassium nitrate		YES					
Ethanol (alcohols)	50%		Partially			Partially	
Ethyl acetate (esters)				NO			NO
Ethyl alcohol			Partially		YES		
Phenol				NO			NO
Glycerine		YES	Partially				
Heptane							NO
Ammonium hydroxide	25%					Partially	
Sodium hydroxide base	60%	YES			YES		
Sodium chloride salt solu-	15%	YES			YES		
Sulphur chloride and calci-		YES					
Carbon tetrachloride and chloric ether				NO			NO
Iron dichloride		YES					
Arsenic acid and oleic acid		YES			YES		
Citric acid	20%	YES			YES		
Nitric acid	20%		Partially			Partially	
Nitric acid	50%			NO			NO
Hydrochloric acid	5%	YES			YES		
Hydrochloric acid	35%			NO			NO
Chromic acid	40%		Partially			Partially	
Formic acid	30%		Partially				
Acetic acid	10%	YES				Partially	
Sulphuric acid	30%	YES				Partially	
Methanol				NO			NO

Environment	Max. Concentration	Resistance test of LED diffuser			Resistance test of LED body		
		YES	Partially	NO	YES	Partially	NO
Gasoline			Partially		YES		
Mineral oil		YES			YES		
Vegetable oil		YES			YES		
Rapeseed oil		YES				Partially	
Oil lamp			Partially			Partially	
Hydrogen peroxide	30%			NO		Partially	
Ammonium sulphate	15%	YES			YES		
Toluene				NO			NO
Turpentine oil					YES		NO
Trichloroethylene				NO			NO
Sodium carbonate	20%	YES					
Aliphatic hydrocarbons		YES				Partially	
Aromatic hydrocarbons				NO			NO
Alkali		YES			YES		