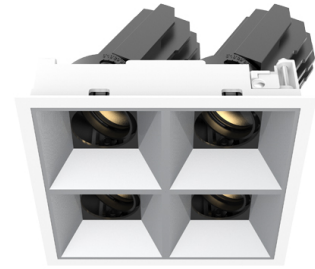


## SENSE 68 Quadruple

Manufacture: NEKO LIGHTING AG

Type: SENSE Modular Downlight ST41-9302430F-WM



### General

- Indoor
- Downlight
- Recessed
- Version: square
- Housing: white
- Reflector: matt
- System Output: 4\*600lm
- IP 20

### LED

- 3000K
- CRI90
- 4\*900lm
- 50000h@L80B10
- SDCM: 3



### Optics

- Beam angle: 24°
- UGR <19

### Electric

- LED Driver: ON-OFF
- LED Power: 4\*7.5W
- System Power: 4\*9W
- 4\*31V
- 250mA

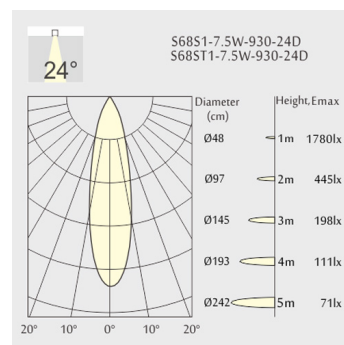
### Dimensions

- Measurement: 142mm x 142mm
- Cutout: 133mm x 133mm
- Height: 98mm
- Ceiling height: 148mm
- Pivot: max. 30°
- Rotation: 355°

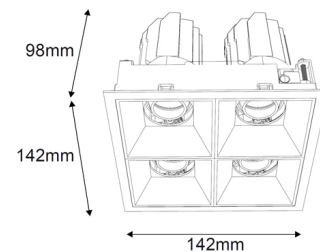
### Description

Square recessed ceiling downlight made of die-cast aluminium with white powder-coating finish (RAL 9016) and matt reflector; ON-OFF Driver; LED 4\*7.5W; measurement 142mm x 142mm; ceiling cutout of 133mm x 133mm with a narrow mounting trim; CCT 3000K with an LED Output of 4\*900lm; high color rendering at an index of CRI90; after a lifetime of 50000h min. 80% of the luminous flux with energy efficient CITIZEN LED Chips; 5 years warranty; narrow beam characteristic with 24° beam angle; lighting perfectly suitable for reading, writing as well as computer and control work according to DIN EN 12464-1 (UGR<19); degree of housing protection according to DIN EN 60529 (IP20)

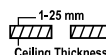
### Light distribution



### Technical drawing



133x133mm



The technical data represent rated values for an ambient temperature of 25°C. The data values for the luminous flux are initially subject to a tolerance of +/- 10%, those for the electrical connected load are initially subject to a tolerance of +/- 10%, and those for the colour temperature are initially subject to a tolerance of +/- 150 K. No liability is assumed for typographical or printing errors. The general terms and conditions of NEKO Lighting AG apply.