

LED Tracklight FOCUS S-15W-930-40D



| | | |
|---------------------|--------|--------------------------|
| Light Output Ratio: | 100.0% | |
| Luminaire Power: | 15.4 W | |
| SHR Nominal: | 0.50 | Calculated using the TM5 |
| SHR Maximum: | 0.60 | fine grid method. |

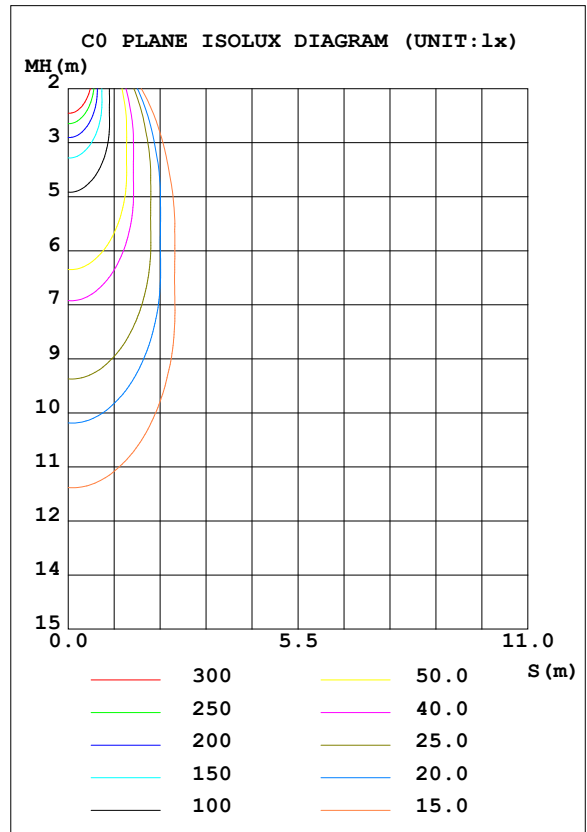
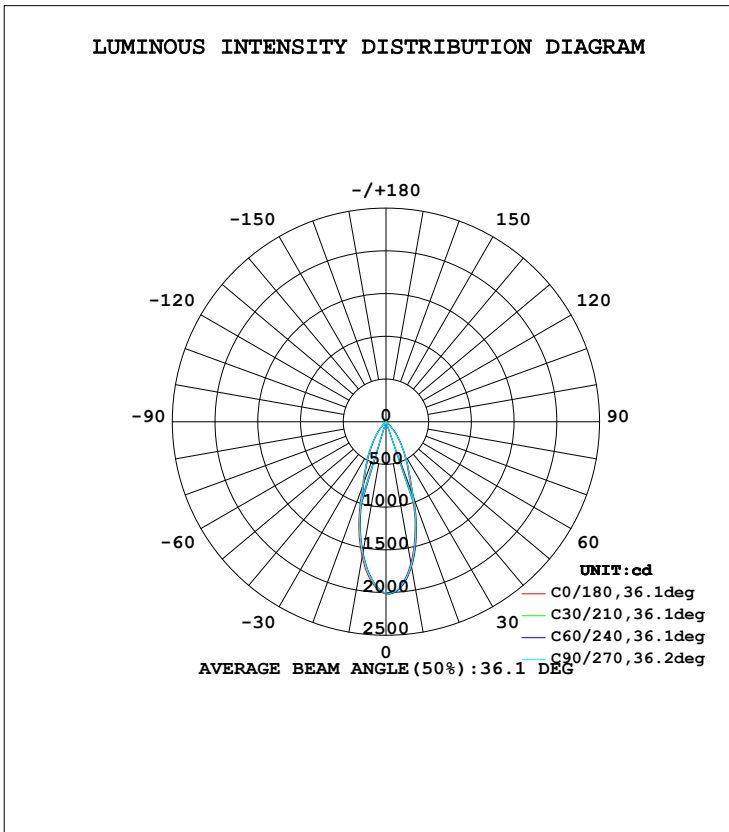
C Range: 0 - 360DEG
C Interval: 15.0DEG
Test Speed: HIGH
Temperature: 25.3DEG
Operators: Meng Yongjian
Test Date: 2017-07-28

γ Range: 0 - 90DEG
 γ Interval: 1.0DEG
Test System: EVERFINE GO-2000B_V1 SYSTEM V2.0.288
Humidity: 52%
Test Distance: 5.850m [K=1.0000]
Remarks:

LUMINAIRE PHOTOMETRIC TEST REPORT

| | | |
|--|--------------------|-------------|
| Test:U:220.7V I:0.0750A P:15.40W PF:0.9296 Lamp Flux:1022.2x1 lm | | |
| NAME: FOCUS S-15W-930-40D | TYPE:Downlight | SERIAL No.: |
| SPEC.:3000K | DIM.: φ70mm*H138mm | |
| MFR.: NEKO LIGHTING AG | | |

| DATA OF LAMP | | PHOTOMETRIC DATA | | | | Eff: 66.39 lm/W |
|-------------------|---------------|-----------------------|--------|---------------------|-----------|-----------------|
| MODEL | CITIZEN-3000K | I _{max} (cd) | 2018 | S/MH (C0/180) | 0.58 | |
| NOMINAL POWER (W) | 15 | LOR (%) | 100.0 | S/MH (C90/270) | 0.57 | |
| RATED VOLTAGE (V) | 220 | TOTAL FLUX (lm) | 1022.2 | η UP, DN (C0-180) | 0.0, 51.8 | |
| NOMINAL FLUX (lm) | 1022.2 | CIE CLASS | DIRECT | η UP, DN (C180-360) | 0.0, 48.2 | |
| LAMPS INSIDE | 1 | η up (%) | 0.0 | CIBSE SHR NOM | 0.50 | |
| TEST VOLTAGE (V) | 220 | η down (%) | 100.0 | CIBSE SHR MAX | 0.60 | |



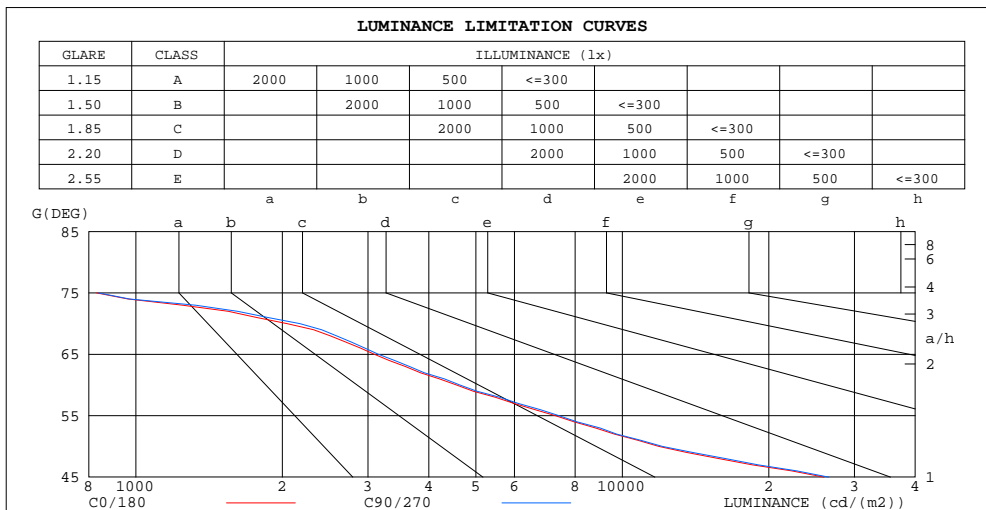
C Range: 0 - 360DEG
 C Interval: 15.0DEG
 Test Speed: HIGH
 Temperature: 25.3DEG
 Operators: Meng Yongjian
 Test Date: 2017-07-28

γ Range: 0 - 90DEG
 γ Interval: 1.0DEG
 Test System: EVERFINE GO-2000B_V1 SYSTEM V2.0.288
 Humidity: 52%
 Test Distance: 5.850m [K=1.0000]
 Remarks:

**ZONAL FLUX DIAGRAM
AND LUMINANCE LIMITATION CURVES**

ZONAL FLUX DIAGRAM:

| γ | C0 | C45 | C90 | C135 | C180 | C225 | C270 | C315 | γ | Φ zone | Φ total | Φ lum,lamp |
|----------|-----------------------|--------|--------|--------|--------|--------|--------|--------|----------|-------------|--------------|-----------------|
| 10 | 1680 | 1730 | 1710 | 1608 | 1607 | 1547 | 1568 | 1668 | 0- 10 | 173.2 | 173.2 | 16.9,16.9 |
| 20 | 888.3 | 955.3 | 928.3 | 814.9 | 809.3 | 751.7 | 774.3 | 882.3 | 10- 20 | 344.8 | 517.9 | 50.7,50.7 |
| 30 | 420.1 | 447.5 | 436.8 | 384.6 | 375.5 | 347.9 | 365.6 | 418.7 | 20- 30 | 270.0 | 788.0 | 77.1,77.1 |
| 40 | 167.2 | 179.2 | 169.7 | 132.8 | 126.5 | 108.8 | 118.7 | 158.5 | 30- 40 | 162.2 | 950.1 | 92.9,92.9 |
| 50 | 29.38 | 31.92 | 29.88 | 24.12 | 23.25 | 21.28 | 22.79 | 28.29 | 40- 50 | 52.66 | 1003 | 98.1,98.1 |
| 60 | 8.767 | 9.332 | 8.905 | 7.526 | 7.336 | 6.693 | 6.998 | 8.479 | 50- 60 | 13.63 | 1016 | 99.4,99.4 |
| 70 | 2.692 | 3.019 | 2.860 | 2.255 | 2.229 | 1.731 | 1.923 | 2.577 | 60- 70 | 4.813 | 1021 | 99.9,99.9 |
| 80 | 0.2145 | 0.2228 | 0.2298 | 0.1616 | 0.1332 | 0.1401 | 0.1331 | 0.1948 | 70- 80 | 0.8778 | 1022 | 100,100 |
| 90 | 0.0525 | 0.0590 | 0.0656 | 0.0525 | 0.0262 | 0.0284 | 0.0284 | 0.0328 | 80- 90 | 0.1054 | 1022 | 100,100 |
| 100 | | | | | | | | | 90-100 | | | |
| 110 | | | | | | | | | 100-110 | | | |
| 120 | | | | | | | | | 110-120 | | | |
| 130 | | | | | | | | | 120-130 | | | |
| 140 | | | | | | | | | 130-140 | | | |
| 150 | | | | | | | | | 140-150 | | | |
| 160 | | | | | | | | | 150-160 | | | |
| 170 | | | | | | | | | 160-170 | | | |
| 180 | | | | | | | | | 170-180 | | | |
| DEG | LUMINOUS INTENSITY:cd | | | | | | | | | UNIT:lm | | |



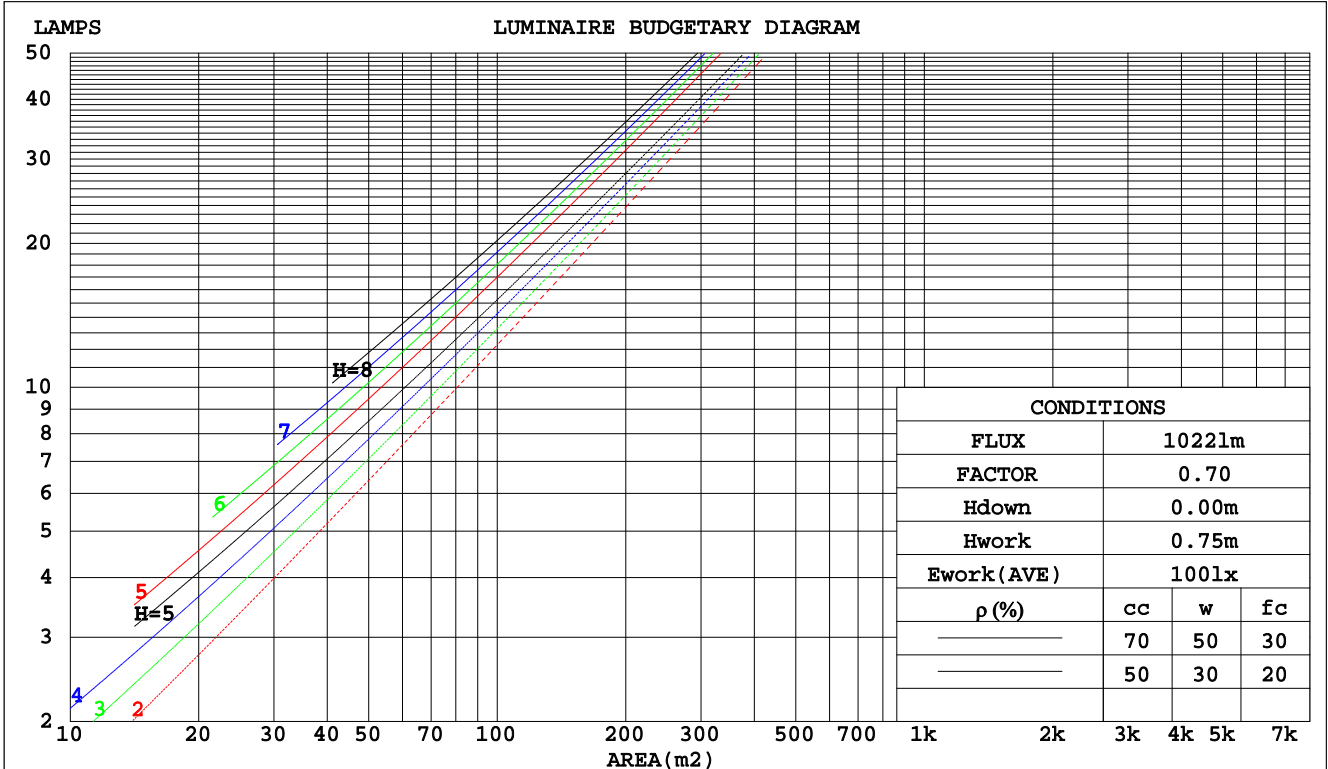
C Range: 0 - 360DEG
C Interval: 15.0DEG
Test Speed: HIGH
Temperature:25.3DEG
Operators:Meng Yongjian
Test Date:2017-07-28

γ Range: 0 - 90DEG
 γ Interval: 1.0DEG
Test System:EVERFINE GO-2000B_V1 SYSTEM V2.0.288
Humidity:52%
Test Distance:5.850m [K=1.0000]
Remarks:

CU AND LUMINAIRE BUDGETARY ESTIMATE DIAGRAM

| | | |
|--|--------------------|-------------|
| Test:U:220.7V I:0.0750A P:15.40W PF:0.9296 Lamp Flux:1022.2x1 lm | | |
| NAME: FOCUS S-15W-930-40D | TYPE:Downlight | SERIAL No.: |
| SPEC.:3000K | DIM.: φ70mm*H138mm | |
| MFR.: NEKO LIGHTING AG | | |

| ρcc | 80% | | | 70% | | | 50% | | | 30% | | | 10% | | | 0 |
|------|---------------------------------|------|------|------|------|------|------|------|------|------|------|------|------|------|------|-----|
| ρw | 50% | 30% | 10% | 50% | 30% | 10% | 50% | 30% | 10% | 50% | 30% | 10% | 50% | 30% | 10% | 0 |
| ρfc | 20% | | | 20% | | | 20% | | | 20% | | | 20% | | | 0 |
| RCR | RCR:Room Cavity Ratio | | | | | | | | | | | | | | | |
| | Coefficients of Utilization(CU) | | | | | | | | | | | | | | | |
| 0.0 | 1.19 | 1.19 | 1.19 | 1.16 | 1.16 | 1.16 | 1.11 | 1.11 | 1.11 | 1.06 | 1.06 | 1.06 | 1.02 | 1.02 | 1.02 | .00 |
| 1.0 | 1.11 | 1.09 | 1.07 | 1.09 | 1.07 | 1.05 | 1.05 | 1.03 | 1.02 | 1.01 | 1.00 | .99 | .98 | .97 | .96 | .94 |
| 2.0 | 1.04 | 1.00 | .97 | 1.02 | .99 | .96 | .99 | .96 | .94 | .96 | .94 | .92 | .94 | .92 | .90 | .89 |
| 3.0 | .98 | .93 | .89 | .96 | .92 | .89 | .94 | .90 | .87 | .91 | .89 | .86 | .89 | .87 | .85 | .83 |
| 4.0 | .92 | .87 | .83 | .91 | .86 | .83 | .89 | .85 | .82 | .87 | .83 | .81 | .85 | .82 | .80 | .78 |
| 5.0 | .87 | .82 | .78 | .86 | .81 | .77 | .84 | .80 | .77 | .83 | .79 | .76 | .81 | .78 | .75 | .74 |
| 6.0 | .82 | .77 | .73 | .81 | .76 | .73 | .80 | .75 | .72 | .79 | .75 | .72 | .77 | .74 | .71 | .70 |
| 7.0 | .78 | .72 | .69 | .77 | .72 | .68 | .76 | .71 | .68 | .75 | .71 | .68 | .74 | .70 | .67 | .66 |
| 8.0 | .74 | .69 | .65 | .74 | .68 | .65 | .73 | .68 | .64 | .72 | .67 | .64 | .71 | .67 | .64 | .63 |
| 9.0 | .71 | .65 | .62 | .70 | .65 | .61 | .69 | .65 | .61 | .68 | .64 | .61 | .68 | .64 | .61 | .60 |
| 10.0 | .67 | .62 | .59 | .67 | .62 | .58 | .66 | .62 | .58 | .65 | .61 | .58 | .65 | .61 | .58 | .57 |



C Range: 0 - 360DEG
 C Interval: 15.0DEG
 Test Speed: HIGH
 Temperature:25.3DEG
 Operators:Meng Yongjian
 Test Date:2017-07-28

γ Range: 0 - 90DEG
 γ Interval: 1.0DEG
 Test System:EVERFINE GO-2000B_V1 SYSTEM V2.0.288
 Humidity:52%
 Test Distance:5.850m [K=1.0000]
 Remarks:

WEC AND CCEC

| | | |
|--|--------------------|-------------|
| Test:U:220.7V I:0.0750A P:15.40W PF:0.9296 Lamp Flux:1022.2x1 lm | | |
| NAME: FOCUS S-15W-930-40D | TYPE:Downlight | SERIAL No.: |
| SPEC.:3000K | DIM.: φ70mm*H138mm | |
| MFR.: NEKO LIGHTING AG | | |

| ρcc | 80% | | | 70% | | | 50% | | | 30% | | | 10% | | | 0 |
|------|-----------------------|------|------|------|------|------|---------------------------------|------|------|------|------|------|------|------|------|---|
| ρw | 50% | 30% | 10% | 50% | 30% | 10% | 50% | 30% | 10% | 50% | 30% | 10% | 50% | 30% | 10% | 0 |
| ρfc | 20% | | | 20% | | | 20% | | | 20% | | | 20% | | | 0 |
| RCR | RCR:Room Cavity Ratio | | | | | | Wall Exitance Coefficients(WEC) | | | | | | | | | |
| 0.0 | | | | | | | | | | | | | | | | |
| 1.0 | .168 | .095 | .030 | .161 | .092 | .029 | .148 | .085 | .027 | .137 | .079 | .025 | .126 | .073 | .024 | |
| 2.0 | .160 | .088 | .027 | .154 | .085 | .026 | .144 | .080 | .025 | .134 | .075 | .024 | .125 | .071 | .022 | |
| 3.0 | .152 | .081 | .024 | .147 | .079 | .024 | .138 | .075 | .023 | .130 | .071 | .022 | .122 | .068 | .021 | |
| 4.0 | .144 | .075 | .022 | .140 | .073 | .022 | .132 | .070 | .021 | .125 | .067 | .020 | .119 | .065 | .020 | |
| 5.0 | .137 | .070 | .020 | .134 | .069 | .020 | .127 | .066 | .019 | .121 | .064 | .019 | .115 | .061 | .018 | |
| 6.0 | .131 | .066 | .019 | .128 | .064 | .019 | .122 | .062 | .018 | .116 | .060 | .018 | .111 | .059 | .017 | |
| 7.0 | .125 | .062 | .017 | .122 | .061 | .017 | .117 | .059 | .017 | .112 | .057 | .017 | .108 | .056 | .016 | |
| 8.0 | .119 | .058 | .016 | .117 | .058 | .016 | .112 | .056 | .016 | .108 | .055 | .016 | .104 | .053 | .016 | |
| 9.0 | .114 | .055 | .015 | .112 | .055 | .015 | .108 | .053 | .015 | .104 | .052 | .015 | .100 | .051 | .015 | |
| 10.0 | .109 | .053 | .015 | .108 | .052 | .014 | .104 | .051 | .014 | .100 | .050 | .014 | .097 | .049 | .014 | |

| ρcc | 80% | | | 70% | | | 50% | | | 30% | | | 10% | | | 0 |
|------|-----------------------|------|------|------|------|------|--|------|------|------|------|------|------|------|------|---|
| ρw | 50% | 30% | 10% | 50% | 30% | 10% | 50% | 30% | 10% | 50% | 30% | 10% | 50% | 30% | 10% | 0 |
| ρfc | 20% | | | 20% | | | 20% | | | 20% | | | 20% | | | 0 |
| RCR | RCR:Room Cavity Ratio | | | | | | Ceiling Cavity Exitance Coefficients(CCEC) | | | | | | | | | |
| 0.0 | .190 | .190 | .190 | .163 | .163 | .163 | .111 | .111 | .111 | .064 | .064 | .064 | .020 | .020 | .020 | |
| 1.0 | .170 | .157 | .146 | .146 | .135 | .125 | .100 | .093 | .087 | .057 | .054 | .050 | .018 | .017 | .016 | |
| 2.0 | .155 | .133 | .114 | .132 | .114 | .099 | .091 | .079 | .069 | .052 | .046 | .040 | .017 | .015 | .013 | |
| 3.0 | .142 | .113 | .091 | .121 | .098 | .079 | .083 | .068 | .055 | .048 | .040 | .033 | .015 | .013 | .011 | |
| 4.0 | .131 | .099 | .074 | .112 | .085 | .064 | .077 | .059 | .045 | .045 | .035 | .027 | .014 | .011 | .009 | |
| 5.0 | .122 | .087 | .061 | .105 | .075 | .053 | .072 | .053 | .037 | .042 | .031 | .022 | .013 | .010 | .007 | |
| 6.0 | .114 | .077 | .051 | .098 | .067 | .044 | .068 | .047 | .031 | .039 | .028 | .019 | .013 | .009 | .006 | |
| 7.0 | .107 | .070 | .043 | .092 | .060 | .038 | .064 | .042 | .027 | .037 | .025 | .016 | .012 | .008 | .005 | |
| 8.0 | .102 | .063 | .037 | .087 | .055 | .032 | .060 | .039 | .023 | .035 | .023 | .014 | .011 | .007 | .005 | |
| 9.0 | .096 | .058 | .032 | .083 | .050 | .028 | .058 | .035 | .020 | .033 | .021 | .012 | .011 | .007 | .004 | |
| 10.0 | .092 | .054 | .028 | .079 | .047 | .025 | .055 | .033 | .018 | .032 | .019 | .010 | .010 | .006 | .003 | |

C Range: 0 - 360DEG
 C Interval: 15.0DEG
 Test Speed: HIGH
 Temperature:25.3DEG
 Operators:Meng Yongjian
 Test Date:2017-07-28

γ Range: 0 - 90DEG
 γ Interval: 1.0DEG
 Test System:EVERFINE GO-2000B_V1 SYSTEM V2.0.288
 Humidity:52%
 Test Distance:5.850m [K=1.0000]
 Remarks:

UGR(Unified Glare Rating) Table

| | | |
|--|--------------------|-------------|
| Test:U:220.7V I:0.0750A P:15.40W PF:0.9296 Lamp Flux:1022.2x1 lm | | |
| NAME: FOCUS S-15W-930-40D | TYPE:Downlight | SERIAL No.: |
| SPEC.:3000K | DIM.: φ70mm*H138mm | |
| MFR.: NEKO LIGHTING AG | | |

| | | | | | | | | | | |
|--|------------------|------|------|------|------|----------------|------|------|------|------|
| ceiling/cavity | 0.7 | 0.7 | 0.5 | 0.5 | 0.3 | 0.7 | 0.7 | 0.5 | 0.5 | 0.3 |
| walls | 0.5 | 0.3 | 0.5 | 0.3 | 0.3 | 0.5 | 0.3 | 0.5 | 0.3 | 0.3 |
| working plane | 0.2 | 0.2 | 0.2 | 0.2 | 0.2 | 0.2 | 0.2 | 0.2 | 0.2 | 0.2 |
| Room dimensions | Viewed crosswise | | | | | Viewed endwise | | | | |
| x = 2H y = 2H | 19.3 | 20.2 | 19.6 | 20.4 | 20.6 | 19.4 | 20.3 | 19.7 | 20.5 | 20.7 |
| 3H | 19.2 | 20.0 | 19.5 | 20.2 | 20.4 | 19.3 | 20.1 | 19.6 | 20.3 | 20.5 |
| 4H | 19.1 | 19.9 | 19.4 | 20.1 | 20.3 | 19.2 | 20.0 | 19.5 | 20.2 | 20.4 |
| 6H | 19.0 | 19.8 | 19.3 | 20.0 | 20.2 | 19.1 | 19.9 | 19.4 | 20.1 | 20.3 |
| 8H | 19.0 | 19.7 | 19.3 | 19.9 | 20.2 | 19.1 | 19.8 | 19.4 | 20.0 | 20.3 |
| 12H | 19.0 | 19.6 | 19.3 | 19.9 | 20.2 | 19.1 | 19.7 | 19.4 | 20.0 | 20.3 |
| 4H 2H | 19.1 | 19.9 | 19.4 | 20.1 | 20.3 | 19.2 | 20.0 | 19.5 | 20.2 | 20.4 |
| 3H | 19.0 | 19.7 | 19.3 | 19.9 | 20.2 | 19.1 | 19.8 | 19.4 | 20.0 | 20.3 |
| 4H | 18.9 | 19.5 | 19.3 | 19.8 | 20.1 | 19.0 | 19.6 | 19.4 | 19.9 | 20.2 |
| 6H | 18.8 | 19.3 | 19.2 | 19.7 | 20.0 | 18.9 | 19.4 | 19.3 | 19.8 | 20.1 |
| 8H | 18.8 | 19.3 | 19.2 | 19.6 | 20.0 | 18.9 | 19.4 | 19.3 | 19.7 | 20.1 |
| 12H | 18.7 | 19.2 | 19.1 | 19.5 | 19.9 | 18.8 | 19.3 | 19.2 | 19.6 | 20.0 |
| 8H 4H | 18.8 | 19.3 | 19.2 | 19.6 | 20.0 | 18.9 | 19.4 | 19.3 | 19.7 | 20.1 |
| 6H | 18.7 | 19.1 | 19.1 | 19.5 | 19.9 | 18.8 | 19.2 | 19.2 | 19.6 | 20.0 |
| 8H | 18.6 | 19.0 | 19.1 | 19.4 | 19.8 | 18.7 | 19.1 | 19.2 | 19.5 | 19.9 |
| 12H | 18.6 | 18.9 | 19.0 | 19.3 | 19.8 | 18.7 | 19.0 | 19.1 | 19.4 | 19.9 |
| 12H 4H | 18.7 | 19.2 | 19.1 | 19.5 | 19.9 | 18.8 | 19.3 | 19.2 | 19.6 | 20.0 |
| 6H | 18.6 | 19.0 | 19.1 | 19.4 | 19.8 | 18.7 | 19.1 | 19.2 | 19.5 | 19.9 |
| 8H | 18.6 | 18.9 | 19.0 | 19.3 | 19.8 | 18.7 | 19.0 | 19.1 | 19.4 | 19.9 |
| Variations with the observer position at spacings: | | | | | | | | | | |
| S = 1.0H | + 2.6 / - 9.1 | | | | | + 2.6 / - 9.1 | | | | |
| 1.5H | + 4.6 / - 6.9 | | | | | + 4.6 / - 7.0 | | | | |
| 2.0H | + 5.5 / - 5.5 | | | | | + 5.6 / - 5.5 | | | | |

CIE Pub.117 Corrected 1022 lm Total Lamp Luminous Flux.(8log(F/F0) = 0.1)

C Range: 0 - 360DEG
 C Interval: 15.0DEG
 Test Speed: HIGH
 Temperature:25.3DEG
 Operators:Meng Yongjian
 Test Date:2017-07-28

γ Range: 0 - 90DEG
 γ Interval: 1.0DEG
 Test System:EVERFINE GO-2000B_V1 SYSTEM V2.0.288
 Humidity:52%
 Test Distance:5.850m [K=1.0000]
 Remarks:

UTILIZATION FACTORS TABLE

| | | |
|--|--------------------|-------------|
| Test:U:220.7V I:0.0750A P:15.40W PF:0.9296 Lamp Flux:1022.2x1 lm | | |
| NAME: FOCUS S-15W-930-40D | TYPE:Downlight | SERIAL No.: |
| SPEC.:3000K | DIM.: φ70mm*H138mm | |
| MFR.: NEKO LIGHTING AG | | |

| REFLECTANCE | | | | | | | | | | |
|----------------------------------|---|-----|-----------|-----|-----|-----|---------------|-----|-----|--------|
| Ceiling | 0.8 | 0.8 | 0.8 | 0.7 | 0.7 | 0.7 | 0.5 | 0.5 | 0.5 | 0 |
| Walls | 0.7 | 0.5 | 0.3 | 0.7 | 0.5 | 0.3 | 0.7 | 0.5 | 0.3 | 0 |
| Working plane | 0.2 | 0.2 | 0.2 | 0.2 | 0.2 | 0.2 | 0.2 | 0.2 | 0.2 | 0 |
| ROOM INDEX | UTILIZATION FACTORS(PERCENT) $k(RI) \times RCR = 5$ | | | | | | | | | |
| k = 0.60 | 87 | 81 | 77 | 87 | 81 | 77 | 86 | 80 | 77 | 73 |
| 0.80 | 95 | 89 | 85 | 94 | 88 | 85 | 93 | 88 | 84 | 81 |
| 1.00 | 99 | 94 | 90 | 98 | 93 | 90 | 97 | 93 | 89 | 85 |
| 1.25 | 103 | 98 | 95 | 102 | 97 | 94 | 100 | 96 | 93 | 89 |
| 1.50 | 106 | 101 | 98 | 105 | 100 | 97 | 102 | 99 | 96 | 92 |
| 2.00 | 109 | 104 | 101 | 107 | 103 | 101 | 105 | 101 | 99 | 94 |
| 2.50 | 110 | 107 | 104 | 109 | 105 | 103 | 106 | 103 | 101 | 95 |
| 3.00 | 112 | 108 | 106 | 110 | 107 | 105 | 107 | 104 | 102 | 96 |
| 4.00 | 114 | 111 | 109 | 112 | 109 | 108 | 108 | 106 | 105 | 98 |
| 5.00 | 115 | 113 | 111 | 113 | 111 | 109 | 109 | 108 | 106 | 99 |
| ROOM INDEX | UF(total) | | | | | | | | | Direct |
| According to DIN EN 13032-2 2004 | | | Suspended | | | | SHRNOM = 1.25 | | | |

C Range: 0 - 360DEG
 C Interval: 15.0DEG
 Test Speed: HIGH
 Temperature:25.3DEG
 Operators:Meng Yongjian
 Test Date:2017-07-28

γ Range: 0 - 90DEG
 γ Interval: 1.0DEG
 Test System:EVERFINE GO-2000B_V1 SYSTEM V2.0.288
 Humidity:52%
 Test Distance:5.850m [K=1.0000]
 Remarks:

ISOCANDELA DIAGRAM

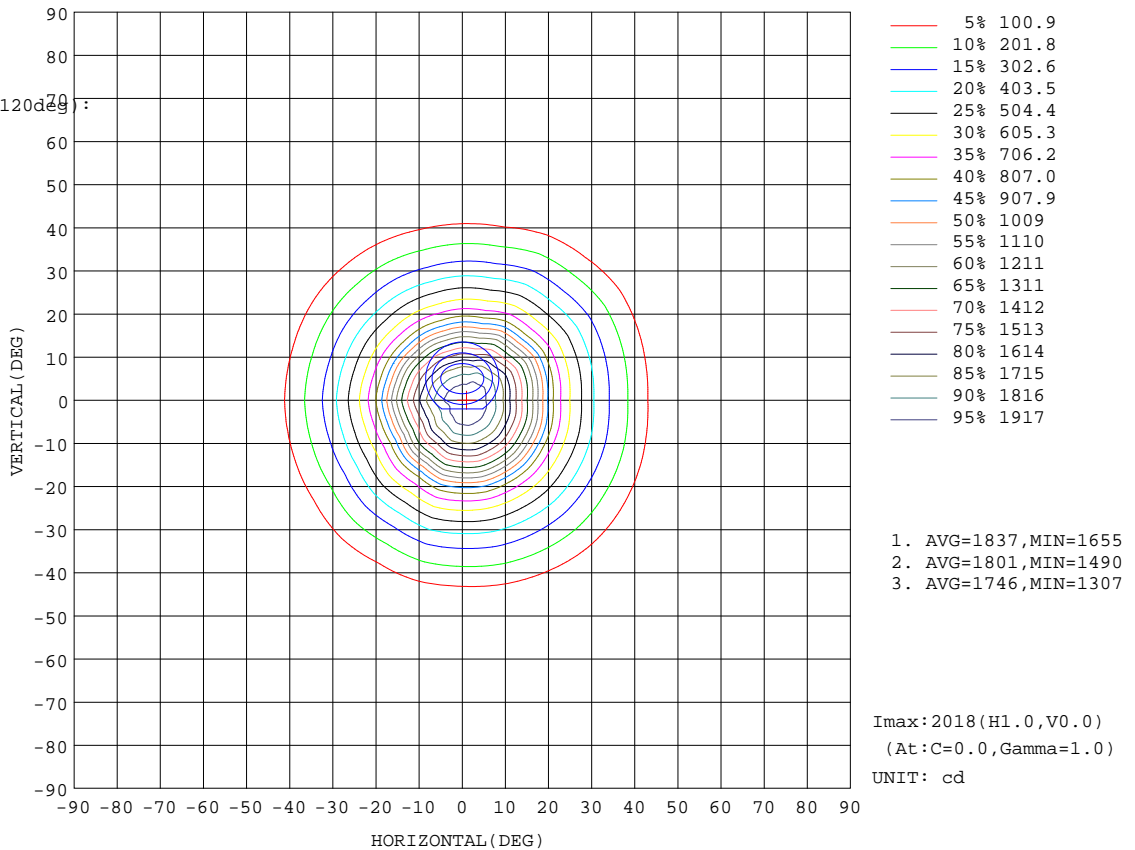
| | | |
|--|--------------------|-------------|
| Test:U:220.7V I:0.0750A P:15.40W PF:0.9296 Lamp Flux:1022.2x1 lm | | |
| NAME: FOCUS S-15W-930-40D | TYPE:Downlight | SERIAL No.: |
| SPEC.:3000K | DIM.: φ70mm*H138mm | |
| MFR.: NEKO LIGHTING AG | | |

Conical surface Flux(90deg):

986.41 lm
%lum = 96.5%
%lamp = 96.5%

Conical surface Flux(120deg):

1016.4 lm
%lum = 99.4%
%lamp = 99.4%



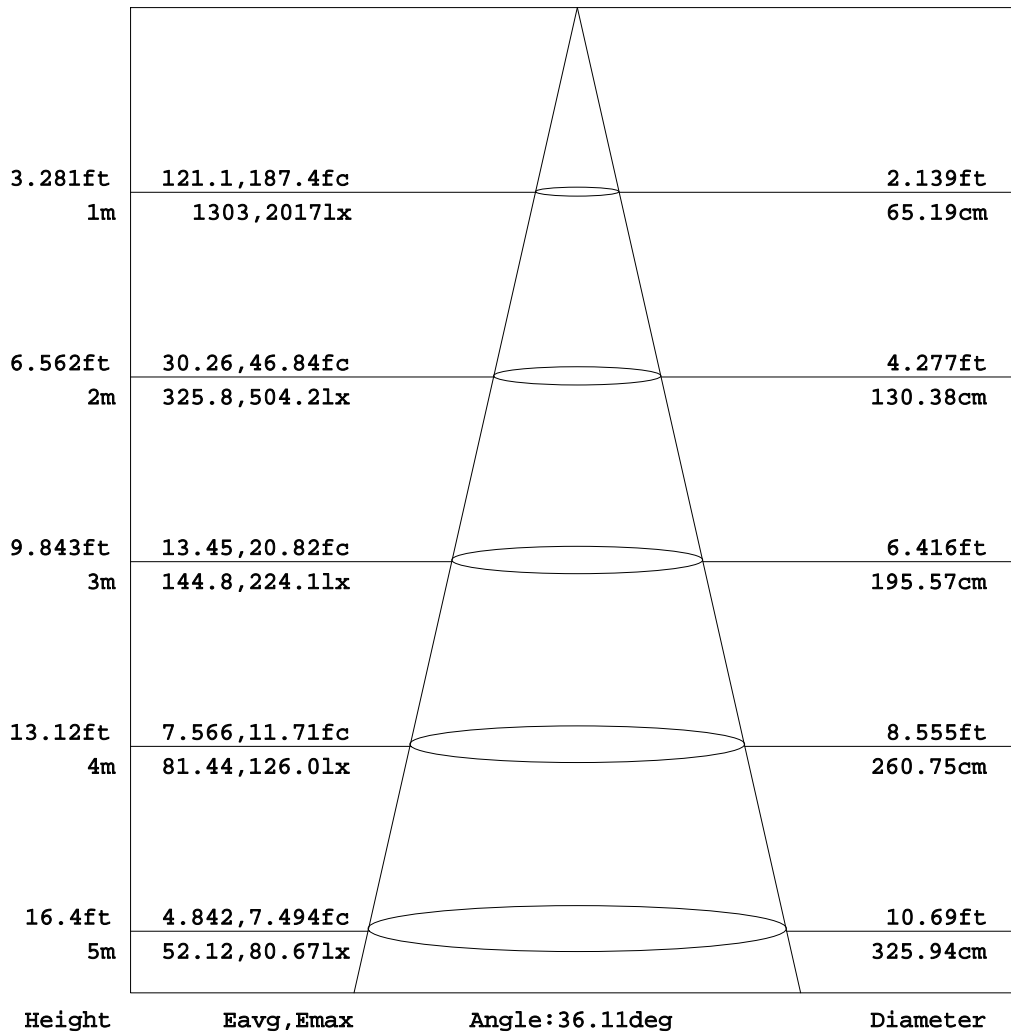
C Range: 0 - 360DEG
C Interval: 15.0DEG
Test Speed: HIGH
Temperature:25.3DEG
Operators:Meng Yongjian
Test Date:2017-07-28

γ Range: 0 - 90DEG
γ Interval: 1.0DEG
Test System:EVERFINE GO-2000B_V1 SYSTEM V2.0.288
Humidity:52%
Test Distance:5.850m [K=1.0000]
Remarks:

AAI Figure

| | | |
|--|--------------------|-------------|
| Test:U:220.7V I:0.0750A P:15.40W PF:0.9296 Lamp Flux:1022.2x1 lm | | |
| NAME: FOCUS S-15W-930-40D | TYPE:Downlight | SERIAL No.: |
| SPEC.:3000K | DIM.: φ70mm*H138mm | |
| MFR.: NEKO LIGHTING AG | | |

Flux out:485.3 lm



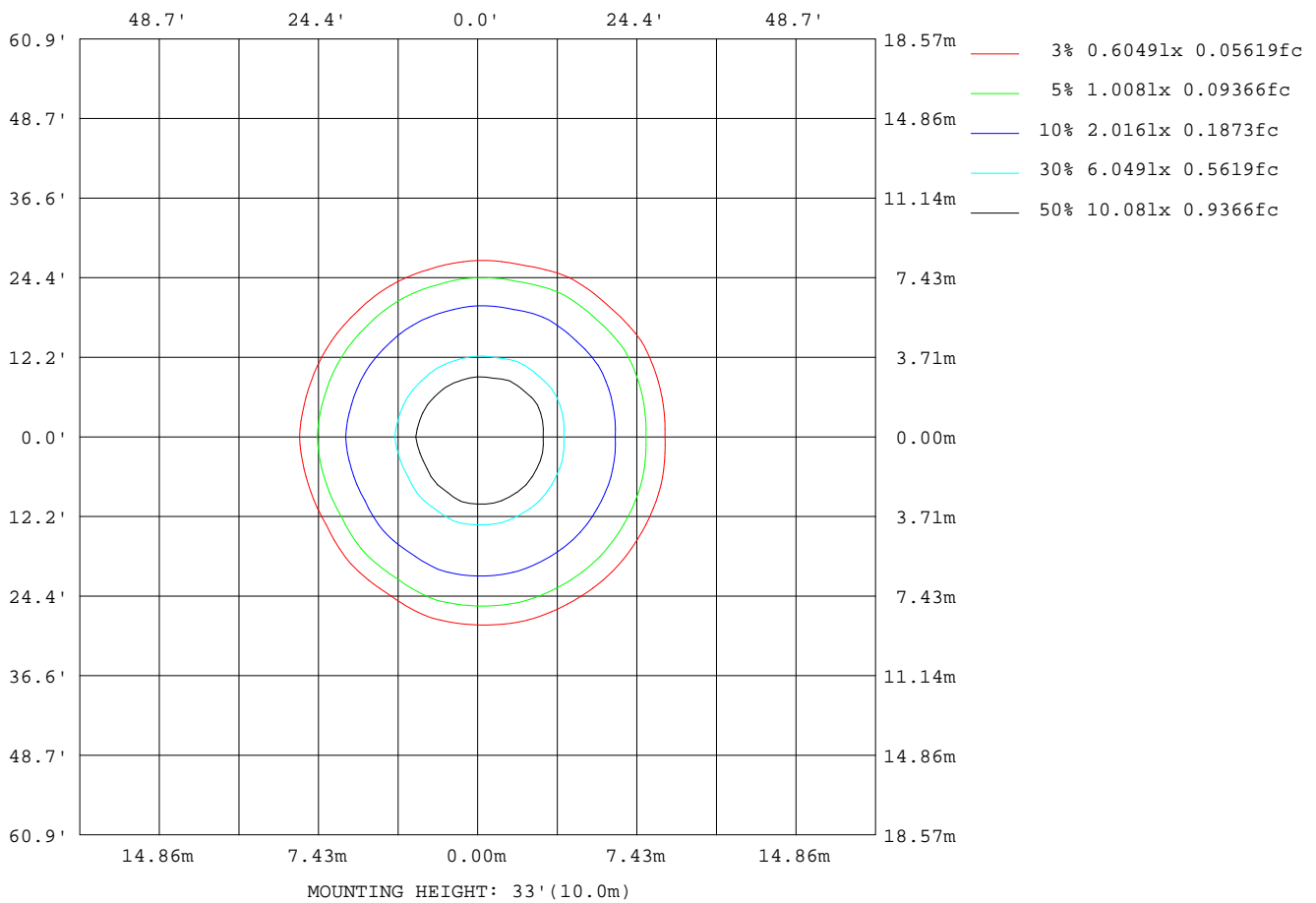
Note:The Curves indicate the illuminated area and the average illumination when the luminaire is at different distance.

C Range: 0 - 360DEG
C Interval: 15.0DEG
Test Speed: HIGH
Temperature:25.3DEG
Operators:Meng Yongjian
Test Date:2017-07-28

γ Range: 0 - 90DEG
γ Interval: 1.0DEG
Test System:EVERFINE GO-2000B_V1 SYSTEM V2.0.288
Humidity:52%
Test Distance:5.850m [K=1.0000]
Remarks:

ISOLUX DIAGRAM

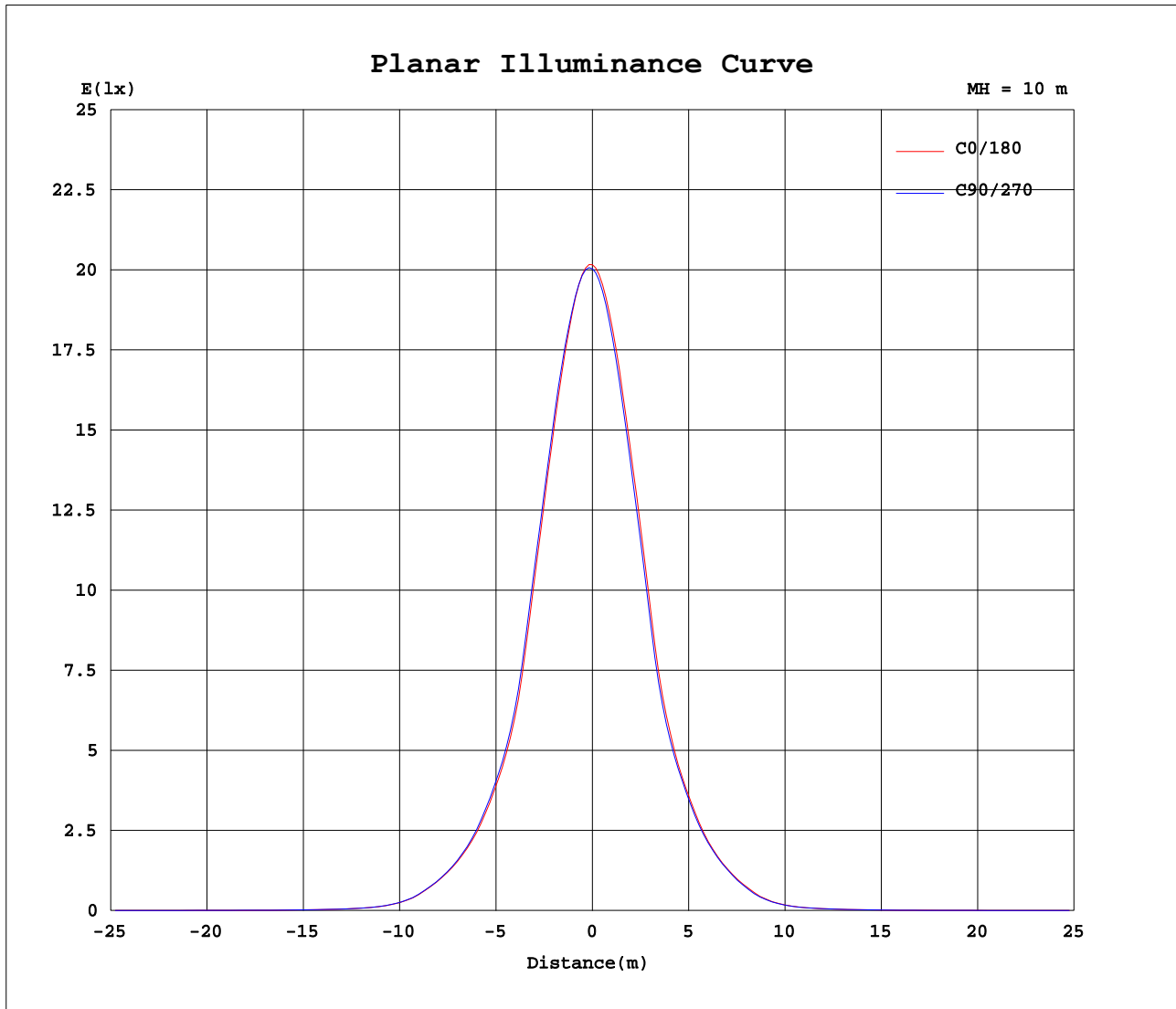
| | | |
|--|--------------------|-------------|
| Test:U:220.7V I:0.0750A P:15.40W PF:0.9296 Lamp Flux:1022.2x1 lm | | |
| NAME: FOCUS S-15W-930-40D | TYPE:Downlight | SERIAL No.: |
| SPEC.:3000K | DIM.: φ70mm*H138mm | |
| MFR.: NEKO LIGHTING AG | | |



C Range: 0 - 360DEG
 C Interval: 15.0DEG
 Test Speed: HIGH
 Temperature:25.3DEG
 Operators:Meng Yongjian
 Test Date:2017-07-28

γ Range: 0 - 90DEG
 γ Interval: 1.0DEG
 Test System:EVERFINE GO-2000B_V1 SYSTEM V2.0.288
 Humidity:52%
 Test Distance:5.850m [K=1.0000]
 Remarks:

Planar Illuminance Curve



C Range: 0 - 360DEG
 C Interval: 15.0DEG
 Test Speed: HIGH
 Temperature: 25.3DEG
 Operators: Meng Yongjian
 Test Date: 2017-07-28

γ Range: 0 - 90DEG
 γ Interval: 1.0DEG
 Test System: EVERFINE GO-2000B_V1 SYSTEM V2.0.288
 Humidity: 52%
 Test Distance: 5.850m [K=1.0000]
 Remarks:

Photometric Data Table [cd]

| | | | | | | | | | | |
|------|--------|--------|--------|--------|--------|--------|--------|--------|--------|--------|
| G/C | 0.0 | 15.0 | 30.0 | 45.0 | 60.0 | 75.0 | 90.0 | 105.0 | 120.0 | 135.0 |
| 0.0 | 2016 | 2013 | 2011 | 2008 | 2007 | 2004 | 2004 | 2001 | 2006 | 2005 |
| 3.0 | 1993 | 1999 | 1999 | 2002 | 2000 | 1999 | 1991 | 1984 | 1958 | 1951 |
| 6.0 | 1894 | 1911 | 1913 | 1921 | 1918 | 1919 | 1903 | 1895 | 1847 | 1839 |
| 9.0 | 1741 | 1768 | 1771 | 1786 | 1781 | 1784 | 1766 | 1755 | 1689 | 1676 |
| 12.0 | 1544 | 1574 | 1580 | 1600 | 1596 | 1603 | 1576 | 1561 | 1482 | 1467 |
| 15.0 | 1315 | 1350 | 1356 | 1378 | 1373 | 1380 | 1353 | 1342 | 1255 | 1242 |
| 18.0 | 1066 | 1103 | 1111 | 1136 | 1128 | 1136 | 1109 | 1096 | 995.4 | 976.4 |
| 21.0 | 810.9 | 841.7 | 848.3 | 871.3 | 862.1 | 869.5 | 848.2 | 837.1 | 765.0 | 753.5 |
| 24.0 | 647.5 | 668.6 | 673.0 | 686.3 | 682.7 | 685.8 | 673.0 | 670.4 | 619.3 | 611.3 |
| 27.0 | 528.3 | 542.4 | 546.0 | 555.3 | 552.8 | 555.6 | 548.4 | 546.8 | 502.4 | 494.3 |
| 30.0 | 420.1 | 434.9 | 438.5 | 447.5 | 444.4 | 446.9 | 436.8 | 434.1 | 393.2 | 384.6 |
| 33.0 | 330.3 | 340.4 | 342.8 | 349.2 | 346.6 | 348.3 | 339.0 | 336.2 | 303.7 | 296.2 |
| 36.0 | 254.6 | 265.1 | 265.7 | 271.0 | 268.8 | 269.6 | 260.4 | 256.6 | 227.9 | 222.3 |
| 39.0 | 188.1 | 197.4 | 197.8 | 201.7 | 199.5 | 199.5 | 191.4 | 186.7 | 160.6 | 155.9 |
| 42.0 | 122.3 | 132.2 | 133.6 | 136.6 | 133.5 | 133.8 | 125.2 | 119.8 | 97.01 | 92.72 |
| 45.0 | 70.68 | 77.80 | 78.53 | 80.30 | 78.51 | 78.34 | 72.23 | 69.88 | 57.08 | 53.93 |
| 48.0 | 40.60 | 43.57 | 44.08 | 45.17 | 44.15 | 44.51 | 41.93 | 40.61 | 33.14 | 31.68 |
| 51.0 | 26.01 | 27.23 | 27.41 | 27.85 | 27.51 | 27.54 | 26.35 | 25.83 | 22.24 | 21.50 |
| 54.0 | 17.97 | 18.99 | 19.13 | 19.46 | 19.17 | 19.28 | 18.22 | 17.88 | 15.77 | 15.22 |
| 57.0 | 12.53 | 13.14 | 13.25 | 13.49 | 13.27 | 13.33 | 12.79 | 12.59 | 10.90 | 10.62 |
| 60.0 | 8.767 | 9.177 | 9.219 | 9.332 | 9.266 | 9.271 | 8.905 | 8.772 | 7.652 | 7.526 |
| 63.0 | 6.255 | 6.553 | 6.562 | 6.667 | 6.583 | 6.592 | 6.378 | 6.325 | 5.588 | 5.542 |
| 66.0 | 4.534 | 4.737 | 4.733 | 4.813 | 4.744 | 4.772 | 4.628 | 4.643 | 4.153 | 4.125 |
| 69.0 | 3.197 | 3.372 | 3.367 | 3.436 | 3.394 | 3.425 | 3.319 | 3.319 | 2.769 | 2.720 |
| 72.0 | 1.841 | 2.008 | 2.010 | 2.067 | 2.017 | 2.041 | 1.925 | 1.891 | 1.421 | 1.340 |
| 75.0 | 0.8266 | 0.9166 | 0.9169 | 0.9366 | 0.8998 | 0.8994 | 0.8353 | 0.7959 | 0.4174 | 0.3817 |
| 78.0 | 0.2561 | 0.2578 | 0.2850 | 0.2753 | 0.2941 | 0.2731 | 0.2736 | 0.2491 | 0.2385 | 0.2010 |
| 81.0 | 0.1905 | 0.1813 | 0.2123 | 0.1988 | 0.2232 | 0.2053 | 0.2123 | 0.1813 | 0.1773 | 0.1442 |
| 84.0 | 0.1380 | 0.1201 | 0.1533 | 0.1332 | 0.1599 | 0.1376 | 0.1490 | 0.1244 | 0.1227 | 0.0939 |
| 87.0 | 0.0898 | 0.0764 | 0.1030 | 0.0852 | 0.1073 | 0.0852 | 0.1029 | 0.0743 | 0.0832 | 0.0633 |
| 90.0 | 0.0525 | 0.0503 | 0.0612 | 0.0590 | 0.0656 | 0.0634 | 0.0656 | 0.0568 | 0.0525 | 0.0525 |
| G/C | 150.0 | 165.0 | 180.0 | 195.0 | 210.0 | 225.0 | 240.0 | 255.0 | 270.0 | 285.0 |
| 0.0 | 1999 | 1999 | 2013 | 2016 | 2011 | 2008 | 2007 | 2004 | 2004 | 2001 |
| 3.0 | 1925 | 1931 | 1963 | 1951 | 1948 | 1937 | 1938 | 1934 | 1942 | 1944 |
| 6.0 | 1797 | 1804 | 1845 | 1823 | 1817 | 1802 | 1805 | 1800 | 1815 | 1821 |
| 9.0 | 1617 | 1628 | 1672 | 1642 | 1636 | 1616 | 1621 | 1614 | 1635 | 1643 |
| 12.0 | 1404 | 1420 | 1467 | 1433 | 1424 | 1400 | 1407 | 1398 | 1423 | 1431 |
| 15.0 | 1166 | 1184 | 1234 | 1191 | 1182 | 1153 | 1164 | 1156 | 1188 | 1200 |
| 18.0 | 900.0 | 916.1 | 964.7 | 921.5 | 911.0 | 886.4 | 893.6 | 887.9 | 919.1 | 933.4 |
| 21.0 | 707.3 | 716.1 | 749.6 | 723.2 | 715.3 | 698.0 | 701.7 | 696.9 | 717.7 | 728.5 |
| 24.0 | 574.7 | 577.8 | 598.5 | 579.3 | 571.5 | 560.0 | 563.9 | 563.8 | 581.9 | 593.4 |
| 27.0 | 461.5 | 464.9 | 484.5 | 465.1 | 459.9 | 449.1 | 454.1 | 453.1 | 469.3 | 478.7 |
| 30.0 | 355.2 | 357.9 | 375.5 | 360.8 | 355.5 | 347.9 | 352.3 | 351.5 | 365.6 | 374.5 |
| 33.0 | 271.0 | 274.6 | 287.4 | 275.2 | 271.6 | 265.3 | 269.7 | 269.6 | 281.9 | 289.6 |
| 36.0 | 200.8 | 204.8 | 214.2 | 204.4 | 201.0 | 195.5 | 199.1 | 198.1 | 209.2 | 215.0 |
| 39.0 | 135.4 | 139.2 | 149.2 | 138.6 | 135.3 | 130.3 | 133.4 | 132.5 | 141.3 | 146.6 |
| 42.0 | 80.21 | 82.59 | 88.42 | 82.15 | 80.42 | 77.29 | 78.53 | 78.60 | 84.01 | 87.17 |
| 45.0 | 45.06 | 46.42 | 50.13 | 46.30 | 45.54 | 44.07 | 45.09 | 44.80 | 47.94 | 49.96 |
| 48.0 | 28.06 | 28.57 | 30.16 | 28.52 | 28.19 | 27.30 | 27.89 | 27.77 | 29.37 | 30.28 |
| 51.0 | 19.52 | 19.91 | 21.00 | 19.81 | 19.53 | 18.87 | 19.23 | 19.28 | 20.44 | 21.08 |
| 54.0 | 13.49 | 13.72 | 14.60 | 13.64 | 13.49 | 13.10 | 13.27 | 13.26 | 14.17 | 14.72 |
| 57.0 | 9.537 | 9.648 | 10.13 | 9.622 | 9.560 | 9.277 | 9.324 | 9.352 | 9.791 | 10.06 |
| 60.0 | 6.894 | 7.002 | 7.336 | 6.985 | 6.880 | 6.693 | 6.714 | 6.704 | 6.998 | 7.154 |
| 63.0 | 5.124 | 5.219 | 5.443 | 5.208 | 5.093 | 4.939 | 4.929 | 4.935 | 5.113 | 5.222 |
| 66.0 | 3.790 | 3.882 | 4.095 | 3.841 | 3.752 | 3.574 | 3.605 | 3.598 | 3.754 | 3.802 |
| 69.0 | 2.344 | 2.454 | 2.669 | 2.448 | 2.328 | 2.155 | 2.184 | 2.177 | 2.337 | 2.398 |
| 72.0 | 1.097 | 1.152 | 1.261 | 1.108 | 0.9763 | 0.9299 | 0.9632 | 0.9759 | 1.060 | 1.098 |
| 75.0 | 0.3080 | 0.3121 | 0.2988 | 0.2549 | 0.2337 | 0.2476 | 0.2293 | 0.2500 | 0.2468 | 0.2782 |
| 78.0 | 0.1992 | 0.1748 | 0.1725 | 0.1816 | 0.1637 | 0.1795 | 0.1594 | 0.1838 | 0.1703 | 0.1992 |
| 81.0 | 0.1423 | 0.1223 | 0.1135 | 0.1269 | 0.1026 | 0.1204 | 0.1026 | 0.1226 | 0.1092 | 0.1401 |
| 84.0 | 0.1008 | 0.0764 | 0.0654 | 0.0854 | 0.0610 | 0.0767 | 0.0588 | 0.0788 | 0.0632 | 0.0876 |
| 87.0 | 0.0700 | 0.0525 | 0.0306 | 0.0460 | 0.0284 | 0.0438 | 0.0306 | 0.0438 | 0.0328 | 0.0482 |
| 90.0 | 0.0525 | 0.0525 | 0.0262 | 0.0284 | 0.0284 | 0.0284 | 0.0284 | 0.0306 | 0.0284 | 0.0306 |
| G/C | 300.0 | 315.0 | 330.0 | 345.0 | | | | | | |
| 0.0 | 2006 | 2005 | 1999 | 1999 | | | | | | |
| 3.0 | 1977 | 1980 | 1993 | 1987 | | | | | | |
| 6.0 | 1877 | 1884 | 1915 | 1903 | | | | | | |
| 9.0 | 1723 | 1733 | 1778 | 1761 | | | | | | |
| 12.0 | 1519 | 1531 | 1590 | 1572 | | | | | | |
| 15.0 | 1297 | 1309 | 1369 | 1349 | | | | | | |
| 18.0 | 1043 | 1058 | 1131 | 1106 | | | | | | |
| 21.0 | 796.4 | 807.3 | 866.0 | 842.8 | | | | | | |

C Range: 0 - 360DEG

C Interval: 15.0DEG

Test Speed: HIGH

Temperature: 25.3DEG

Operators: Meng Yongjian

Test Date: 2017-07-28

γ Range: 0 - 90DEG

γ Interval: 1.0DEG

Test System: EVERFINE GO-2000B_V1 SYSTEM V2.0.288

Humidity: 52%

Test Distance: 5.850m [K=1.0000]

Remarks:

Photometric Data Table [cd]

| | | | | |
|------|--------|--------|--------|--------|
| 24.0 | 644.9 | 649.8 | 683.0 | 666.9 |
| 27.0 | 523.6 | 531.5 | 557.3 | 545.1 |
| 30.0 | 414.4 | 418.7 | 445.6 | 434.5 |
| 33.0 | 324.5 | 328.4 | 349.5 | 340.8 |
| 36.0 | 245.3 | 251.0 | 271.3 | 263.7 |
| 39.0 | 175.1 | 180.5 | 200.1 | 195.8 |
| 42.0 | 106.6 | 112.0 | 133.1 | 128.7 |
| 45.0 | 63.14 | 65.54 | 78.01 | 75.94 |
| 48.0 | 37.22 | 38.54 | 44.08 | 43.02 |
| 51.0 | 23.93 | 24.62 | 27.64 | 26.84 |
| 54.0 | 16.92 | 17.23 | 19.21 | 18.77 |
| 57.0 | 11.80 | 12.08 | 13.31 | 13.00 |
| 60.0 | 8.284 | 8.479 | 9.290 | 9.089 |
| 63.0 | 5.937 | 6.086 | 6.599 | 6.476 |
| 66.0 | 4.344 | 4.431 | 4.788 | 4.688 |
| 69.0 | 2.987 | 3.104 | 3.430 | 3.336 |
| 72.0 | 1.610 | 1.701 | 2.042 | 1.976 |
| 75.0 | 0.6437 | 0.7235 | 0.9029 | 0.8853 |
| 78.0 | 0.2119 | 0.2385 | 0.2424 | 0.2540 |
| 81.0 | 0.1419 | 0.1729 | 0.1703 | 0.1882 |
| 84.0 | 0.0829 | 0.1182 | 0.1069 | 0.1270 |
| 87.0 | 0.0414 | 0.0679 | 0.0589 | 0.0767 |
| 90.0 | 0.0284 | 0.0328 | 0.0328 | 0.0372 |

C Range: 0 - 360DEG
 C Interval: 15.0DEG
 Test Speed: HIGH
 Temperature: 25.3DEG
 Operators: Meng Yongjian
 Test Date: 2017-07-28

γ Range: 0 - 90DEG
 γ Interval: 1.0DEG
 Test System: EVERFINE GO-2000B_V1 SYSTEM V2.0.288
 Humidity: 52%
 Test Distance: 5.850m [K=1.0000]
 Remarks: