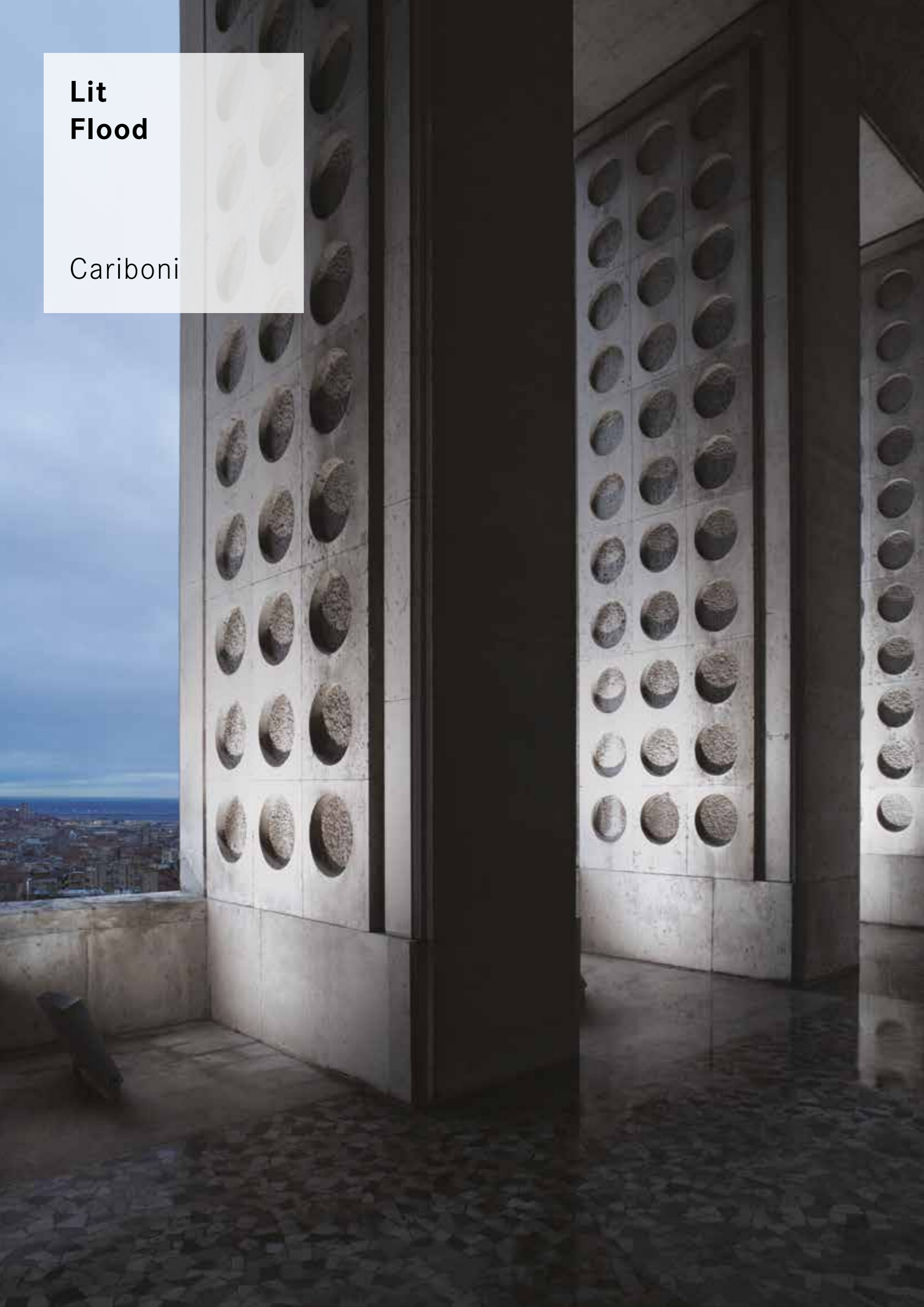


Lit Flood

Cariboni



Lit P. 342

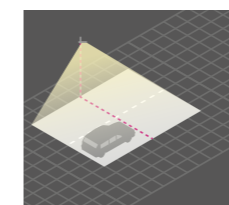


220-240V 50/60Hz	Tensione di alimentazione <i>Nominal voltage</i> Nennspannung
CL I on request CL II	Classe di isolamento elettrico <i>Electrical insulation class</i> Elektrische Isolierklasse
IP66	Grado di protezione <i>Insulation protection degree</i> Isolationsschutzgrad
IK10	Protezione contro gli urti <i>Protection against impact</i> Stoßfestigkeit
-30°C +50°C	Temperatura ambiente <i>Ambient temperature</i> Umgebungstemperatur
Sablé100 Noir	Colori <i>Colours</i> Farben
Included	Alimentazione elettronica <i>Electronic power supply</i> Elektronische Stromversorgung
HM4 Main voltage variation DALI CLO on request Wireless on request PLC on request 1-10V on request Pilot line on request Motion detectors/ brightness on request	Illuminazione intelligente <i>Smart Lighting</i> Intelligente Beleuchtung

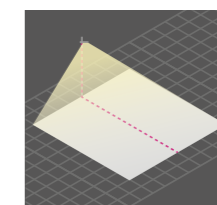
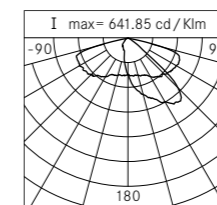


2425-19915 lm	Flusso sorgente <i>Source flux</i> Lichtstrom der Lichtquelle
4000K 3000K	Temperatura colore <i>Colour temperature</i> Farbtemperatur
≥70	Indice di resa cromatica (CRI) <i>Colour rendering index (CRI)</i> Farbwiedergabe-Index (CRI)

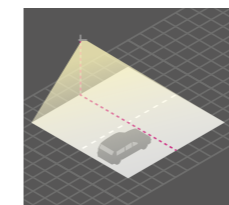
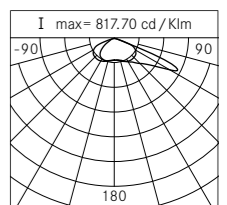
Ottiche asimmetriche stradali
Street asymmetrical optics Optik asymmetrisch straßenleuchte



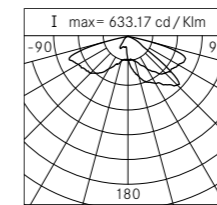
ME-03 (L/H= 1.1)



LT-62 (L/H= 2)



LA-02 (L/H= 1.25)



L = Larghezza strada, *Street Width*, Straßenbreite
H = Altezza palo, *Pole Height*, Lichtpunkthöhe

Approfondimento sistemi ottici, *Deepening optical systems*, Vertiefung optischen Systeme P. 50

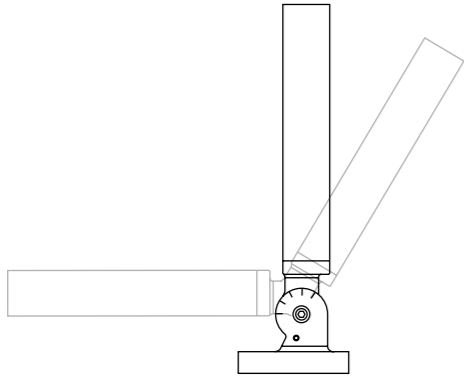
Approfondimento sistemi di smart lighting, *Deepening smart lighting systems*, Vertiefung intelligenten Beleuchtungssysteme P. 52

Ottiche asimmetriche *Asymmetrical optics* Optik asymmetrisch

Installazione: parete, terra, superfici orizzontali e verticali
Installation: wall, ground, horizontal and vertical surfaces
Installation: wand, boden, horizontale und vertikale Flächen

	Schermatura sorgenti <i>Hidden Light Emitting Surfaces</i> Abschirmung der Lichtquellen		Sistema ottico multilayers <i>Multilayer optical system</i> Optisches System "Multilayer"		Illuminazione intelligente <i>Smart Lighting</i> Intelligente Beleuchtung
	Ta -30°C +50°C <i>Ta -30°C +50°C</i> Ta -30°C +50°C		Elevata resistenza agli urti (IK10) <i>Maximum impact resistance (IK10)</i> Maximum Stoßfestigkeitsgrad (IK10)		Resistenza agenti chimici/atmosferici <i>Resistance to chemical/atmospheric agents</i> Widerstand chemische/atmosphärische
CLO	CLO (Constant Lumen Output) <i>CLO (Constant Lumen Output)</i> CLO (Constant Lumen Output)		Prodotto orientabile <i>Orientable product</i> Ausrichtbares Produkt		Precablaggio <i>Pre-wiring</i> Vorverkabelung
	Dimensioni compatte <i>Dimensions compact</i> Kompakten Abmessungen		Separabilità delle componenti <i>Separable components</i> Trennbare Komponenten		Flicker free <i>Flicker free</i> Flicker free
	Sistema acqua stop <i>Water stop system</i> Wasserstopp-System		TLCI>85 su richiesta <i>TLCI>85 on request</i> TLCI>85 auf Anfrage		

Lit Flood



Orientabilità

Inclinazione $-90^{\circ} + 35^{\circ}$. Sistema di puntamento e blocco in regolazione continua.

Cavo e dispositivo di connessione elettrica integrato nel sistema di fissaggio.

Orientability

Tilt $-90^{\circ} + 35^{\circ}$. Continuously-adjustable pointing and locking system.

Cable and electrical connection device integrated into the fastening system.

Ausrichtbarkeit

Neigung $-90^{\circ} + 35^{\circ}$. Ausrichtungssystem und Blockiervorrichtung mit stufenloser Regulierung.

Kabel und Vorrichtung für den elektrischen Anschluss im Befestigungssystem integriert.

Design sistemico

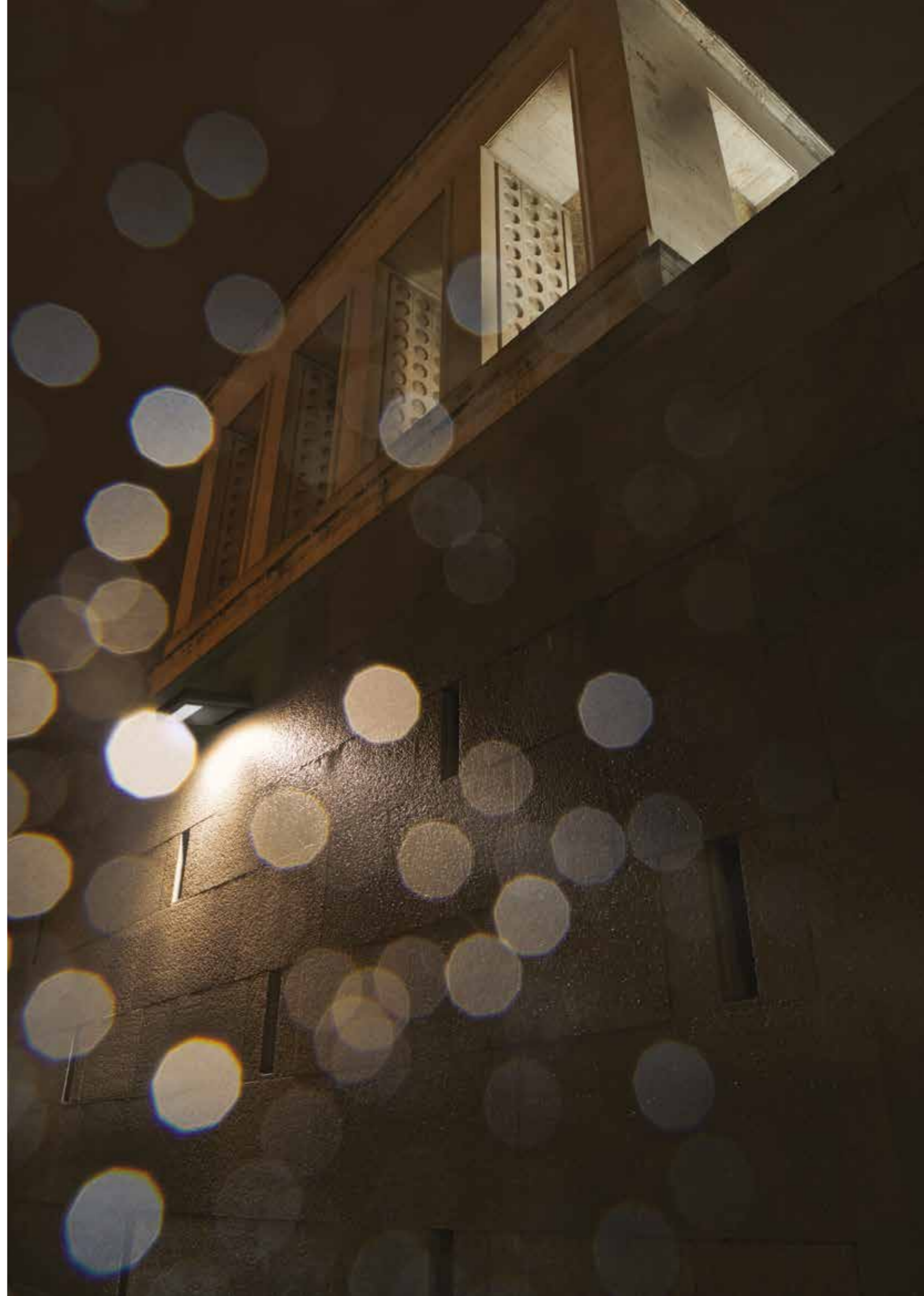
Le differenti modalità di installazione e l'orientabilità dei prodotti rispondono alle specifiche richieste funzionali e architettoniche di ogni contesto urbano. La possibilità di combinare ogni distribuzione fotometrica con i differenti accessori di fissaggio consente ai progettisti di illuminare ogni spazio urbano con originali configurazioni di sistema. I prodotti della linea Lit Flood possono essere installati senza necessità di aprire l'apparecchio. Il prodotto infatti è fornito pre-cablato per un'installazione semplice, veloce e sicura.

Systemic design

The various modes of installation and the orientability of the product respond to specific functional and architectural requirements of each urban context. The possibility to combine each photometric distribution with various mounting accessories allows designers to illuminate differing urban spaces with original system configurations. The products from the Lit Flood line can be installed without the need to open the units. The product is, in fact, supplied pre-wired, permitting simple, rapid and safe installation.

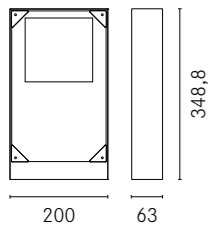
Systemisches Design

Die verschiedenen Installationsmodalitäten und die Ausrichtbarkeit der Produkte entsprechen den spezifischen funktionellen und architektonischen Anforderungen jedes städtischen Kontextes. Die Möglichkeit, jede photometrische Verteilung mit den verschiedenen Befestigungszubehörteilen zu kombinieren, ermöglicht es den Entwerfern, jeden städtischen Raum mit originellen Systemkonfigurationen zu beleuchten. Die Produkte der Lit Flood-Produktreihe können installiert werden, ohne dass das Gerät geöffnet werden muss. Das Produkt wird in der Tat verkabelt für eine einfache, schnelle und sichere Installation geliefert.





Lit Flood flood 1 small



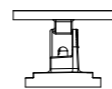
Max weight: 5kg
 Max exposed surface: 0.08m²
 Lateral exposed surface: 0.035m²

Lit 1 S		
06LT6		
Led (source flux): Ref. @700mA @4000K Ref. @700mA @3000K		
5165lm 31W	4295lm 31W	
A4	A4	
mA		
700	525	350
0	5	3
K		
4000	3000	
0	9	
Optics		
ME-03	LA-02	LT-62
A0	A1	A2
Colors		
Sablé100		
C		
Smart Lighting		
Custom programmable virtual midnight		
HM4		

Accessori Accessories Zubehör Lit Flood small

06LT901C0 - Sablé100

Giunto orientabile piastra Lit Flood staffa
 Adjustable joint for board Lit Flood
 Justierbares Gelenk für Platte Lit Flood



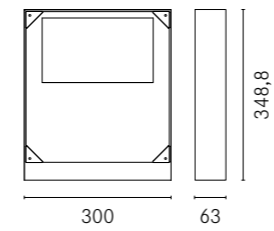
Accessori Accessories Zubehör Lit Flood medium / large

06LT902C0 - Sablé100

Giunto orientabile piastra Lit Flood staffa
 Adjustable joint for board Lit Flood
 Justierbares Gelenk für Platte Lit Flood



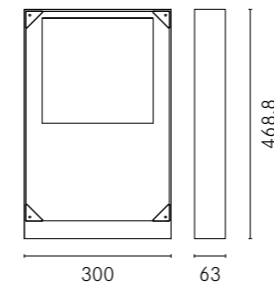
Lit Flood flood 1 medium



Max weight: 6.50kg
 Max exposed surface: 0.12m²
 Lateral exposed surface: 0.035m²

Lit 1 M		
06LT7		
Led (source flux): Ref. @700mA @4000K Ref. @700mA @3000K		
10115lm 62W	8415lm 62W	
A8	A8	
mA		
700	525	350
0	5	3
K		
4000	3000	
0	9	
Optics		
ME-03	LA-02	LT-62
A0	A1	A2
Colors		
Sablé100		
C		
Smart Lighting		
Custom programmable virtual midnight		
HM4		

Lit Flood flood 1 large



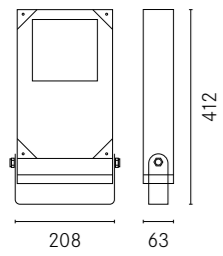
Max weight: 8kg
 Max exposed surface: 0.15m²
 Lateral exposed surface: 0.042m²

Lit 1 L		
06LT8		
Led (source flux): Ref. @700mA @4000K Ref. @700mA @3000K		
19915lm 124W	16570lm 124W	
B6	B6	
mA		
700	525	350
0	5	3
K		
4000	3000	
0	9	
Optics		
ME-03	LA-02	LT-62
A0	A1	A2
Colors		
Sablé100		
C		
Smart Lighting		
Custom programmable virtual midnight		
HM4		

Esempio Example Beispiel

06LT8	B6	0	0	A0	C	HM4
--------------	-----------	----------	----------	-----------	----------	------------

Lit Flood flood 2 small



Max weight: 5 kg

Max exposed surface: 0.08m²Lateral exposed surface: 0.035m²

Lit 2 S

06LT2

Led (source flux):
Ref. @700mA @4000K Ref. @700mA @3000K

5165lm 31W	4295lm 31W
------------	------------

A4	A4
-----------	-----------

mA

700	525	350
0	5	3

K

4000	3000
0	9

Optics

ME-03	LA-02	LT-62
A0	A1	A2

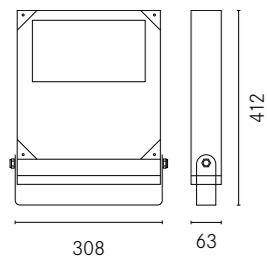
Colors

Sablé100
C

Smart Lighting

Custom programmable virtual midnight
HM4

Lit Flood flood 2 medium



Max weight: 6.50kg

Max exposed surface: 0.12m²Lateral exposed surface: 0.035m²

Lit 2 M

06LT3

Led (source flux):
Ref. @700mA @4000K Ref. @700mA @3000K

10115lm 62W	8415lm 62W
-------------	------------

A8	A8
-----------	-----------

mA

700	525	350
0	5	3

K

4000	3000
0	9

Optics

ME-03	LA-02	LT-62
A0	A1	A2

Colors

Sablé100
C

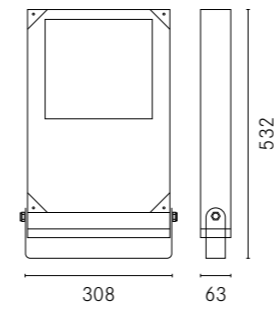
Smart Lighting

Custom programmable virtual midnight
HM4

Esempio *Example* Beispiel

06LT3	A8	0	0	A0	C	HM4
--------------	-----------	----------	----------	-----------	----------	------------

Lit Flood flood 2 large



Max weight: 8 kg

Max exposed surface: 0.15m²Lateral exposed surface: 0.042m²

Lit 2 L

06LT4

Led (source flux):
Ref. @700mA @4000K Ref. @700mA @3000K

19915lm 124W	16570lm 124W
--------------	--------------

B6	B6
-----------	-----------

mA

700	525	350
0	5	3

K

4000	3000
0	9

Optics

ME-03	LA-02	LT-62
A0	A1	A2

Colors

Sablé100
C

Smart Lighting

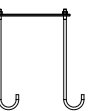
Custom programmable virtual midnight
HM4

Accessori *Accessories* Zubehör Lit Flood**06LT909J0 - Sablé100**

Ancore per calcestruzzo

Anchor for concrete

Anker für Beton

**06LT908C0 - Sablé100**

Picchetto per interramento

Picket for ground installation

Erdspeiß für Bodeninstallation

**06KS918C0 / 06KS909C0**

Connettore 2 vie - Connettore 4 vie IP68

2-way connector - 4-way connector IP68

2-Wege-Stecker - 4-Wege-Stecker IP68



Lit Flood Flood

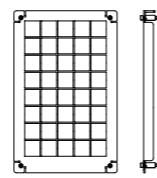
Accessori *Accessories* Zubehör Lit Flood small

06LT905C0 - Sablé100

Griglia

Grid

Schutzgitter



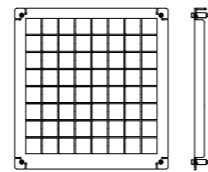
Accessori *Accessories* Zubehör Lit Flood medium

06LT906C0 - Sablé100

Griglia

Grid

Schutzgitter



Accessori *Accessories* Zubehör Lit Flood large

06LT907C0 - Sablé100

Griglia

Grid

Schutzgitter

