

Recessed round downlight with LED 1 x VR15 direct distribution with electronic control gear for current driven LED's.

Luminaire luminous flux: 3000lm. Connection power 24.8 Watt.

Luminaire efficiency: 121lm/W.

Luminous colour: 4000K. colour rendering Ra >= 80.

Life span: 97000 h: L 90 / B 10 / F 10.

Ready for connection with heat resistant wires. for a nominal voltage of 230V 50/60/0Hz

Luminaire housing made of steel with patented assembly kit for an easy secure and fast assembly.

Cieling ring with bayonet catch solvent-free powder-coated in white similar to RAL 9016.

Electronic control gear loose in cieling opening.

Caution ! Do not cover the light fitting with insulating material.

For recessed mounting in cielings with cut openings Ø 205 mm.

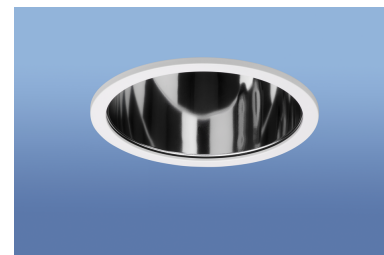
Highly-specular reflector in high-quality aluminium thickness 1,2 mm.

The reflector surface is of super-purity aluminum chemically polished and post-anodised with a minimum coating thickness of 5µm. No disturbing interference colours.

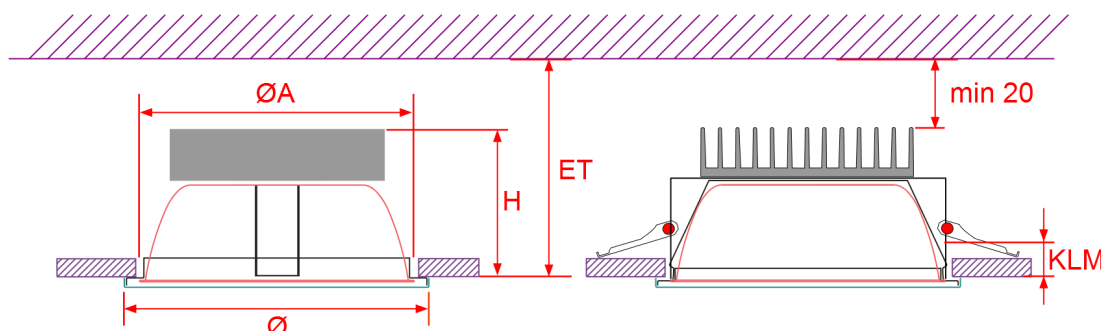
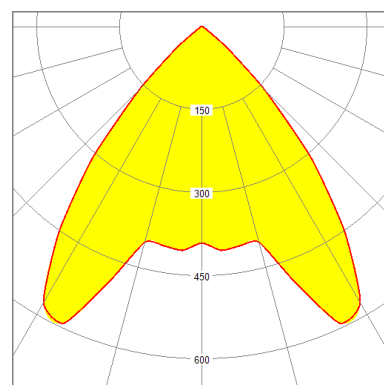
With an internal diffusion chamber for a soft light appearance at a high efficiency attaining a glare reduction.

Shielding angle alpha = 25°.

Weight: 0.94 kg



Luminaire colour: ähnlich RAL 9016



Ø x H	ØA	ET/ KLM
220 x 120	205	140/1-28

0.94 kg IP20



produced  
according to  
DIN VDE 0711



230V  
50/60/0Hz