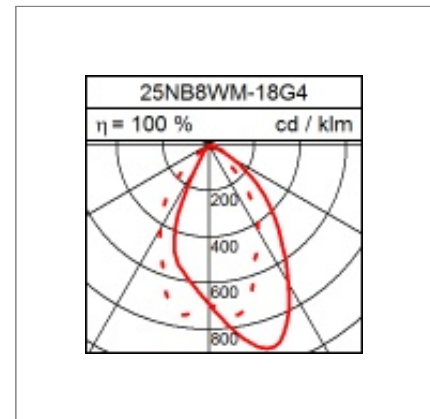
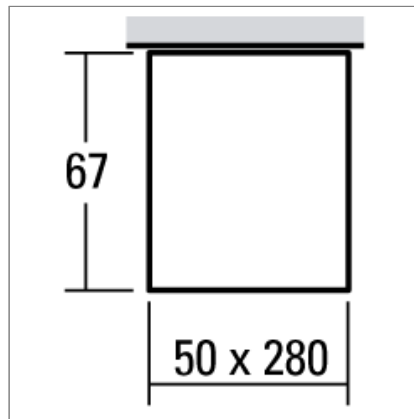
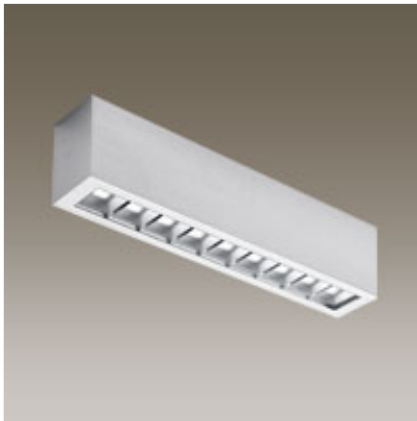





Technical Data

Ceiling mounted LED luminaire PIXEL

14.8W LED, 1251 Lumen, 4000 Kelvin. IP30. Satinated acrylic glass. Smoothed aluminium. Asymmetric light distribution. Aluminium casted housing for ceiling montage. With electronic ballast.



Product data

Item number	25NB8WM-18G4
Dimensions	
Lamp	LED
Equipment	19.3W
System output	14.8W
Ballast	
Assemblypoints Distance	
Weight	
Safety signs	IP30   

Light data

Optical Light Output Ratio	100 %
Light direct/non direct Ratio	100 % / 0 %
Absolute luminous flux	1251 lm
Lightoutput (lm/W)	84.53

Glare rating UGR

X=4H, Y=8H, S=0,25H
Deg. of reflection 70/50/20

Perpendicular Zero	27.8
Perpendicular Ninty	22.4