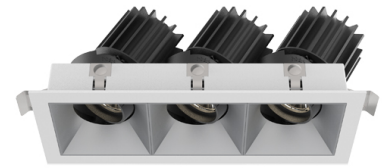


SENSE 45 Triple



Manufacture: NEKO LIGHTING AG

Type: SENSE Modular Downlight SU31-9301812F-WM

General

- Indoor
- Downlight
- Recessed
- Version: square
- Housing: white
- Reflector: matt
- System Output: 3*350lm
- IP 20

LED



- 3000K
- CRI90
- 3*500lm
- 50000h@L80B10
- SDCM: 3

Optics

- Beam angle: 18°
- UGR <19

Electric

- LED Driver: ON-OFF
- LED Power: 3*4W
- System Power: 3*6W
- 3*12V
- 350mA

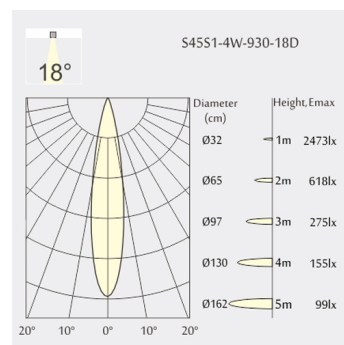
Dimensions

- Measurement: 137mm x 55mm
- Cutout: 126mm x 45mm
- Height: 60mm
- Ceiling height: 110mm
- Pivot: max. 30°
- Rotation: 355°

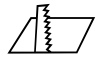
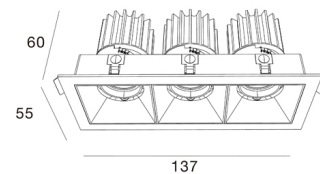
Description

Square recessed ceiling downlight made of die-cast aluminium with white powder-coating finish (RAL 9016) and matt reflector; ON-OFF Driver; LED 3*4W; measurement 137mm x 55mm; ceiling cutout of 126mm x 45mm with a narrow mounting trim; CCT 3000K with an LED Output of 3*500lm; high color rendering at an index of CRI90; after a lifetime of 50000h min. 80% of the luminous flux with energy efficient CREE LED Chips; 5 years warranty; narrow beam characteristic with 18° beam angle; lighting perfectly suitable for reading, writing as well as computer and control work according to DIN EN 12464-1 (UGR<19); degree of housing protection according to DIN EN 60529 (IP20)

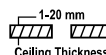
Light distribution



Technical drawing



126x45mm



The technical data represent rated values for an ambient temperature of 25°C. The data values for the luminous flux are initially subject to a tolerance of +/- 10%, those for the electrical connected load are initially subject to a tolerance of +/- 10%, and those for the colour temperature are initially subject to a tolerance of +/- 150 K. No liability is assumed for typographical or printing errors. The general terms and conditions of NEKO Lighting AG apply.