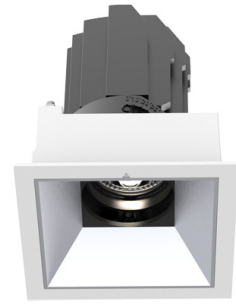


SENSE 68 Square

Manufacture: NEKO LIGHTING AG

Type: SENSE Modular Downlight STS1-9302408F-WM



General

- Indoor
- Downlight
- Recessed
- Version: square
- Housing: white
- Reflector: matt
- System Output: 600lm
- IP 20

LED

- 3000K
- CRI90
- 900lm
- 50000h@L80B10
- SDCM: 3



Optics

- Beam angle: 24°
- UGR <19

Electric

- LED Driver: ON-OFF
- LED Power: 7.5W
- System Power: 9W
- 31V
- 250mA

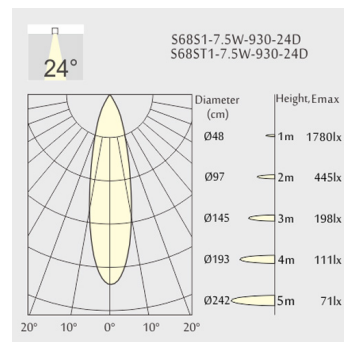
Dimensions

- Measurement: 78mm x 78mm
- Cutout: 68mm x 68mm
- Height: 98mm
- Ceiling height: 148mm
- Net Weight: 300g
- Gross Weight: 400g
- Pivot: max. 30°
- Rotation: 355°

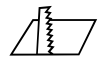
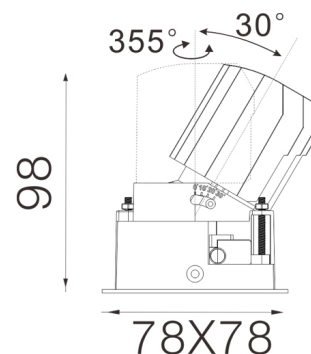
Description

Square recessed ceiling downlight made of die-cast aluminium with white powder-coating finish (RAL 9016) and matt reflector; ON-OFF Driver; LED 7.5W; measurement 78mm x 78mm; ceiling cutout of 68mm x 68mm with a narrow mounting trim; luminaire's weight is approximately 300g; CCT 3000K with an LED Output of 900lm; high color rendering at an index of CRI90; after a lifetime of 50000h min. 80% of the luminous flux with energy efficient CITIZEN LED Chips; 5 years warranty; narrow beam characteristic with 24° beam angle; lighting perfectly suitable for reading, writing as well as computer and control work according to DIN EN 12464-1 (UGR<19); degree of housing protection according to DIN EN 60529 (IP20)

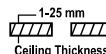
Light distribution



Technical drawing



68x68mm



The technical data represent rated values for an ambient temperature of 25°C. The data values for the luminous flux are initially subject to a tolerance of +/- 10%, those for the electrical connected load are initially subject to a tolerance of +/- 10%, and those for the colour temperature are initially subject to a tolerance of +/- 150 K. No liability is assumed for typographical or printing errors. The general terms and conditions of NEKO Lighting AG apply.