

LED Tracklight FOCUS S-28W-930-40D



Light Output Ratio:	100.0%	
Luminaire Power:	27.69 W	
SHR Nominal:	0.50	Calculated using the TM5
SHR Maximum:	0.70	fine grid method.

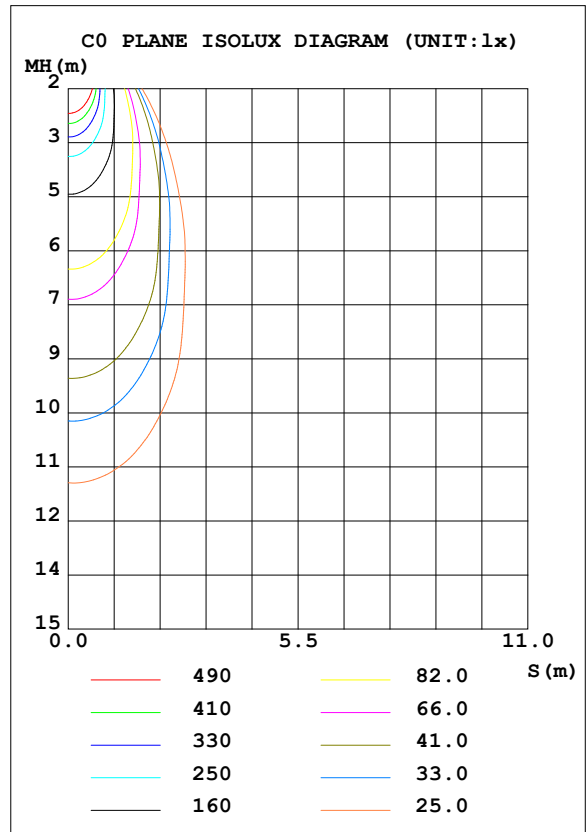
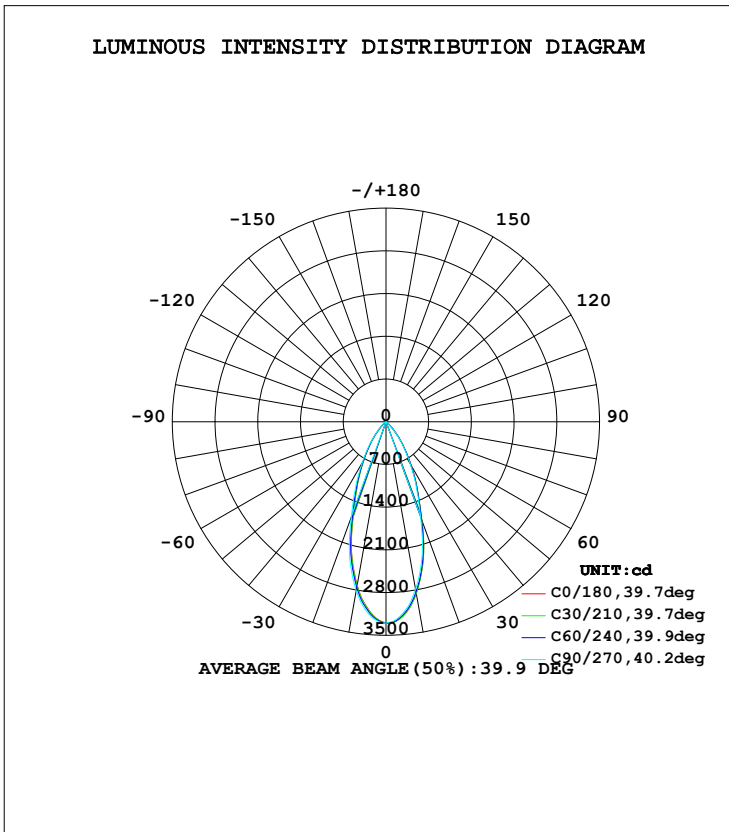
C Range: 0 - 360DEG  
C Interval: 15.0DEG  
Test Speed: HIGH  
Temperature: 25.3DEG  
Operators: Meng Yongjian  
Test Date: 2017-07-26

$\gamma$  Range: 0 - 90DEG  
 $\gamma$  Interval: 1.0DEG  
Test System: EVERFINE GO-2000B\_V1 SYSTEM V2.0.288  
Humidity: 52%  
Test Distance: 5.850m [K=1.0000]  
Remarks:

**LUMINAIRE PHOTOMETRIC TEST REPORT**

Test:U:220.6V I:0.1332A P:27.69W PF:0.9422 Lamp Flux:1902.8x1 lm		
NAME: FOCUS S-28W-930-40D	TYPE:Downlight	SERIAL No.:
SPEC.:3000K	DIM.: φ70mm*H138mm	
MFR.: NEKO LIGHTING AG		

DATA OF LAMP		PHOTOMETRIC DATA Eff: 68.73 lm/W			
MODEL	CITIZEN-3000K	I <sub>max</sub> (cd)	3305	S/MH (C0/180)	0.62
NOMINAL POWER (W)	28.0	LOR (%)	100.0	S/MH (C90/270)	0.65
RATED VOLTAGE (V)	220	TOTAL FLUX (lm)	1902.8	η UP, DN (C0-180)	0.0, 49.5
NOMINAL FLUX (lm)	1902.8	CIE CLASS	DIRECT	η UP, DN (C180-360)	0.0, 50.5
LAMPS INSIDE	1	η up (%)	0.0	CIBSE SHR NOM	0.50
TEST VOLTAGE (V)	220	η down (%)	100.0	CIBSE SHR MAX	0.70



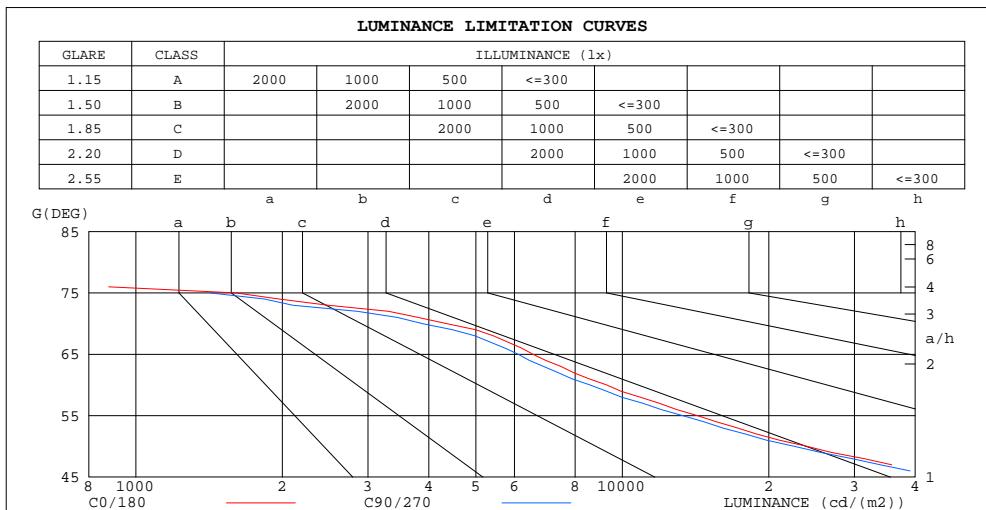
C Range: 0 - 360DEG  
 C Interval: 15.0DEG  
 Test Speed: HIGH  
 Temperature: 25.3DEG  
 Operators: Meng Yongjian  
 Test Date: 2017-07-26

γ Range: 0 - 90DEG  
 γ Interval: 1.0DEG  
 Test System: EVERFINE GO-2000B\_V1 SYSTEM V2.0.288  
 Humidity: 52%  
 Test Distance: 5.850m [K=1.0000]  
 Remarks:

**ZONAL FLUX DIAGRAM  
AND LUMINANCE LIMITATION CURVES**

**ZONAL FLUX DIAGRAM:**

$\gamma$	C0	C45	C90	C135	C180	C225	C270	C315	$\gamma$	$\Phi$ zone	$\Phi$ total	$\Phi$ lum,lamp
10	2858	2855	2788	2682	2722	2731	2809	2908	0- 10	289.7	289.7	15.2,15.2
20	1722	1729	1660	1527	1543	1551	1668	1806	10- 20	622.0	911.6	47.9,47.9
30	821.6	828.8	795.7	714.2	729.9	726.5	786.2	864.1	20- 30	534.9	1447	76,76
40	297.4	303.4	276.9	231.4	249.5	247.5	272.7	315.5	30- 40	312.1	1759	92.4,92.4
50	59.39	60.76	55.89	47.12	50.25	49.80	54.79	64.92	40- 50	103.6	1862	97.9,97.9
60	17.85	17.85	16.50	14.30	15.39	15.79	17.21	18.94	50- 60	28.03	1890	99.3,99.3
70	5.730	5.768	5.112	4.068	4.696	5.012	5.516	6.613	60- 70	10.32	1901	99.9,99.9
80	0.4225	0.4456	0.4947	0.4084	0.3777	0.3502	0.3516	0.4071	70- 80	1.982	1903	100,100
90	0.1071	0.1050	0.1290	0.1071	0.0612	0.0590	0.0590	0.0809	80- 90	0.2376	1903	100,100
100									90-100			
110									100-110			
120									110-120			
130									120-130			
140									130-140			
150									140-150			
160									150-160			
170									160-170			
180									170-180			
DEG	LUMINOUS INTENSITY:cd									UNIT:lm		



LUMINANCE cd/(m2)		
G(DEG)	C0/180	C90/270
85	692	817
80	633	741
75	1605	1421
70	4355	3886
65	6550	6108
60	9283	8582
55	14283	13314
50	24020	22604
45	47954	45385

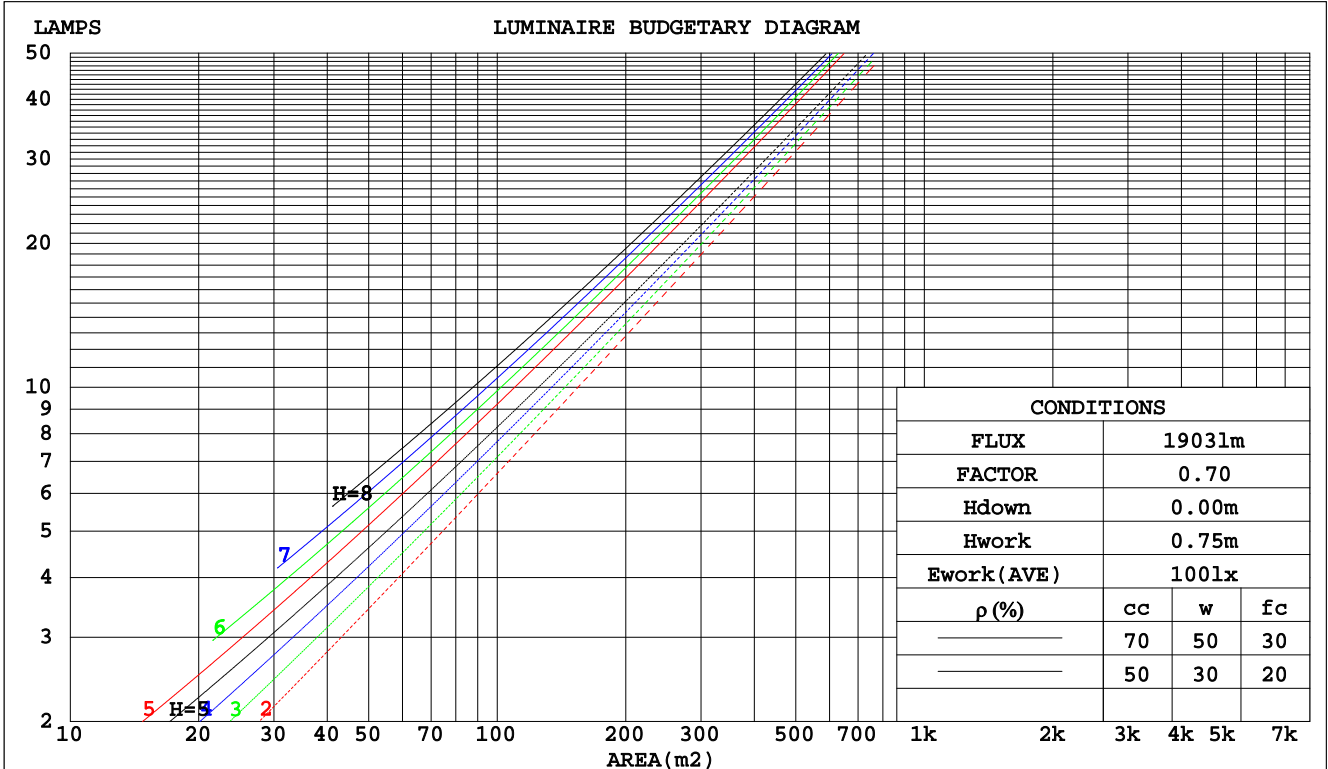
C Range: 0 - 360DEG  
 C Interval: 15.0DEG  
 Test Speed: HIGH  
 Temperature: 25.3DEG  
 Operators: Meng Yongjian  
 Test Date: 2017-07-26

$\gamma$  Range: 0 - 90DEG  
 $\gamma$  Interval: 1.0DEG  
 Test System: EVERFINE GO-2000B\_V1 SYSTEM V2.0.288  
 Humidity: 52%  
 Test Distance: 5.850m [K=1.0000]  
 Remarks:

**CU AND LUMINAIRE BUDGETARY ESTIMATE DIAGRAM**

Test:U:220.6V I:0.1332A P:27.69W PF:0.9422 Lamp Flux:1902.8x1 lm		
NAME: FOCUS S-28W-930-40D	TYPE:Downlight	SERIAL No.:
SPEC.:3000K	DIM.: φ70mm*H138mm	
MFR.: NEKO LIGHTING AG		

pcc	80%			70%			50%			30%			10%			0
	50%	30%	10%	50%	30%	10%	50%	30%	10%	50%	30%	10%	50%	30%	10%	0
ρw																0
ρfc																0
RCR	RCR:Room Cavity Ratio															
	Coefficients of Utilization(CU)															
0.0	1.19	1.19	1.19	1.16	1.16	1.16	1.11	1.11	1.11	1.06	1.06	1.06	1.02	1.02	1.02	1.00
1.0	1.11	1.09	1.07	1.09	1.07	1.05	1.05	1.03	1.02	1.01	.00	.99	.98	.97	.96	.94
2.0	1.04	1.00	.97	1.02	.99	.96	.99	.96	.94	.96	.94	.92	.93	.91	.90	.88
3.0	.97	.93	.89	.96	.92	.88	.93	.90	.87	.91	.88	.85	.89	.86	.84	.83
4.0	.91	.86	.82	.90	.85	.82	.88	.84	.81	.86	.83	.80	.84	.81	.79	.77
5.0	.86	.81	.77	.85	.80	.76	.83	.79	.76	.82	.78	.75	.80	.77	.74	.73
6.0	.81	.76	.72	.81	.75	.71	.79	.74	.71	.78	.74	.71	.76	.73	.70	.69
7.0	.77	.71	.67	.76	.71	.67	.75	.70	.67	.74	.70	.67	.73	.69	.66	.65
8.0	.73	.67	.64	.72	.67	.63	.71	.67	.63	.70	.66	.63	.70	.66	.63	.61
9.0	.69	.64	.60	.69	.64	.60	.68	.63	.60	.67	.63	.60	.66	.62	.59	.58
10.0	.66	.61	.57	.66	.61	.57	.65	.60	.57	.64	.60	.57	.63	.59	.57	.55



C Range: 0 - 360DEG  
 C Interval: 15.0DEG  
 Test Speed: HIGH  
 Temperature:25.3DEG  
 Operators:Meng Yongjian  
 Test Date:2017-07-26

γ Range: 0 - 90DEG  
 γ Interval: 1.0DEG  
 Test System:EVERFINE GO-2000B\_V1 SYSTEM V2.0.288  
 Humidity:52%  
 Test Distance:5.850m [K=1.0000]  
 Remarks:

WEC AND CCEC

Test:U:220.6V I:0.1332A P:27.69W PF:0.9422 Lamp Flux:1902.8x1 lm		
NAME: FOCUS S-28W-930-40D	TYPE:Downlight	SERIAL No.:
SPEC.:3000K	DIM.: φ70mm*H138mm	
MFR.: NEKO LIGHTING AG		

ρcc	80%			70%			50%			30%			10%			0
ρw	50%	30%	10%	50%	30%	10%	50%	30%	10%	50%	30%	10%	50%	30%	10%	0
ρfc	20%			20%			20%			20%			20%			0
RCR	RCR:Room Cavity Ratio						Wall Exitance Coefficients(WEC)									
0.0																
1.0	.171	.097	.031	.164	.093	.030	.151	.087	.028	.140	.081	.026	.129	.075	.024	
2.0	.163	.089	.027	.157	.087	.027	.147	.082	.025	.137	.077	.024	.128	.072	.023	
3.0	.155	.082	.025	.150	.080	.024	.141	.076	.023	.133	.073	.022	.125	.069	.021	
4.0	.147	.076	.022	.143	.075	.022	.135	.072	.021	.128	.069	.021	.122	.066	.020	
5.0	.140	.071	.021	.136	.070	.020	.130	.068	.020	.124	.065	.019	.118	.063	.019	
6.0	.133	.067	.019	.130	.066	.019	.125	.064	.019	.119	.062	.018	.114	.060	.018	
7.0	.127	.063	.018	.125	.062	.018	.120	.060	.017	.115	.059	.017	.110	.057	.017	
8.0	.122	.060	.017	.119	.059	.017	.115	.057	.016	.110	.056	.016	.106	.055	.016	
9.0	.117	.056	.016	.115	.056	.016	.110	.055	.015	.107	.053	.015	.103	.052	.015	
10.0	.112	.054	.015	.110	.053	.015	.106	.052	.015	.103	.051	.015	.099	.050	.014	

ρcc	80%			70%			50%			30%			10%			0
ρw	50%	30%	10%	50%	30%	10%	50%	30%	10%	50%	30%	10%	50%	30%	10%	0
ρfc	20%			20%			20%			20%			20%			0
RCR	RCR:Room Cavity Ratio						Ceiling Cavity Exitance Coefficients(CCEC)									
0.0	.190	.190	.190	.163	.163	.163	.111	.111	.111	.064	.064	.064	.020	.020	.020	
1.0	.171	.157	.145	.146	.135	.125	.100	.093	.087	.057	.054	.050	.018	.017	.016	
2.0	.155	.133	.114	.133	.114	.098	.091	.079	.068	.052	.046	.040	.017	.015	.013	
3.0	.142	.114	.091	.122	.098	.079	.084	.068	.055	.048	.040	.032	.016	.013	.011	
4.0	.132	.099	.074	.113	.085	.064	.078	.059	.045	.045	.035	.027	.014	.011	.009	
5.0	.123	.087	.061	.105	.075	.053	.073	.053	.037	.042	.031	.022	.014	.010	.007	
6.0	.115	.078	.051	.099	.067	.044	.068	.047	.031	.040	.028	.019	.013	.009	.006	
7.0	.108	.070	.043	.093	.061	.037	.064	.043	.027	.037	.025	.016	.012	.008	.005	
8.0	.103	.064	.037	.088	.055	.032	.061	.039	.023	.036	.023	.014	.012	.007	.004	
9.0	.097	.058	.032	.084	.051	.028	.058	.036	.020	.034	.021	.012	.011	.007	.004	
10.0	.093	.054	.028	.080	.047	.024	.056	.033	.017	.032	.019	.010	.011	.006	.003	

C Range: 0 - 360DEG  
 C Interval: 15.0DEG  
 Test Speed: HIGH  
 Temperature:25.3DEG  
 Operators:Meng Yongjian  
 Test Date:2017-07-26

γ Range: 0 - 90DEG  
 γ Interval: 1.0DEG  
 Test System:EVERFINE GO-2000B\_V1 SYSTEM V2.0.288  
 Humidity:52%  
 Test Distance:5.850m [K=1.0000]  
 Remarks:

UGR(Unified Glare Rating) Table

Test:U:220.6V I:0.1332A P:27.69W PF:0.9422 Lamp Flux:1902.8x1 lm		
NAME: FOCUS S-28W-930-40D	TYPE:Downlight	SERIAL No.:
SPEC.:3000K	DIM.: φ70mm*H138mm	
MFR.: NEKO LIGHTING AG		

ceiling/cavity	0.7	0.7	0.5	0.5	0.3	0.7	0.7	0.5	0.5	0.3
walls	0.5	0.3	0.5	0.3	0.3	0.5	0.3	0.5	0.3	0.3
working plane	0.2	0.2	0.2	0.2	0.2	0.2	0.2	0.2	0.2	0.2
Room dimensions	Viewed crosswise					Viewed endwise				
x = 2H y = 2H	21.3	22.2	21.6	22.4	22.6	21.1	22.0	21.4	22.2	22.4
3H	21.2	22.0	21.5	22.2	22.4	21.0	21.8	21.3	22.0	22.2
4H	21.1	21.9	21.4	22.1	22.4	20.9	21.7	21.2	21.9	22.2
6H	21.0	21.8	21.3	22.0	22.3	20.9	21.6	21.1	21.8	22.1
8H	21.0	21.7	21.3	22.0	22.2	20.8	21.5	21.1	21.8	22.0
12H	21.0	21.6	21.3	21.9	22.2	20.8	21.4	21.1	21.7	22.0
4H 2H	21.1	21.9	21.4	22.1	22.4	20.9	21.7	21.2	21.9	22.2
3H	21.0	21.7	21.3	22.0	22.2	20.8	21.5	21.1	21.8	22.0
4H	20.9	21.5	21.3	21.8	22.1	20.7	21.3	21.1	21.6	21.9
6H	20.8	21.4	21.2	21.7	22.0	20.6	21.2	21.0	21.5	21.8
8H	20.8	21.3	21.2	21.6	22.0	20.6	21.1	21.0	21.4	21.8
12H	20.7	21.2	21.1	21.6	21.9	20.5	21.0	20.9	21.4	21.7
8H 4H	20.8	21.3	21.2	21.6	22.0	20.6	21.1	21.0	21.4	21.8
6H	20.7	21.1	21.1	21.5	21.9	20.5	20.9	20.9	21.3	21.7
8H	20.6	21.0	21.1	21.4	21.8	20.4	20.8	20.9	21.2	21.6
12H	20.6	20.9	21.0	21.3	21.8	20.4	20.7	20.8	21.1	21.6
12H 4H	20.7	21.2	21.1	21.6	21.9	20.5	21.0	20.9	21.4	21.7
6H	20.6	21.0	21.1	21.4	21.8	20.4	20.8	20.9	21.2	21.6
8H	20.6	20.9	21.0	21.3	21.8	20.4	20.7	20.8	21.1	21.6
Variations with the observer position at spacings:										
S = 1.0H	+ 2.8 / - 8.4					+ 2.7 / - 8.5				
1.5H	+ 4.8 / - 6.7					+ 4.7 / - 6.6				
2.0H	+ 5.4 / - 5.2					+ 5.3 / - 5.1				

CIE Pub.117 Corrected 1903 lm Total Lamp Luminous Flux.(8log(F/F0) = 2.2)

C Range: 0 - 360DEG  
 C Interval: 15.0DEG  
 Test Speed: HIGH  
 Temperature:25.3DEG  
 Operators:Meng Yongjian  
 Test Date:2017-07-26

γ Range: 0 - 90DEG  
 γ Interval: 1.0DEG  
 Test System:EVERFINE GO-2000B\_V1 SYSTEM V2.0.288  
 Humidity:52%  
 Test Distance:5.850m [K=1.0000]  
 Remarks:

**UTILIZATION FACTORS TABLE**

Test:U:220.6V I:0.1332A P:27.69W PF:0.9422 Lamp Flux:1902.8x1 lm		
NAME: FOCUS S-28W-930-40D	TYPE:Downlight	SERIAL No.:
SPEC.:3000K	DIM.: φ70mm*H138mm	
MFR.: NEKO LIGHTING AG		

REFLECTANCE										
Ceiling	0.8	0.8	0.8	0.7	0.7	0.7	0.5	0.5	0.5	0
Walls	0.7	0.5	0.3	0.7	0.5	0.3	0.7	0.5	0.3	0
Working plane	0.2	0.2	0.2	0.2	0.2	0.2	0.2	0.2	0.2	0
ROOM INDEX	UTILIZATION FACTORS(PERCENT) $k(RI) \times RCR = 5$									
k = 0.60	87	80	76	86	80	76	85	80	76	73
0.80	94	88	85	94	88	84	92	87	84	80
1.00	99	93	90	98	93	89	97	93	89	85
1.25	103	98	94	102	97	94	100	96	93	89
1.50	106	101	98	105	100	97	102	99	96	92
2.00	109	104	101	107	103	100	104	101	99	94
2.50	110	106	103	109	105	102	105	103	101	95
3.00	112	108	106	110	107	105	107	104	102	96
4.00	114	111	109	112	109	107	108	106	105	98
5.00	115	113	111	113	111	109	109	107	106	99
ROOM INDEX	UF(total)									Direct
According to DIN EN 13032-2 2004			Suspended				SHRNOM = 1.25			

C Range: 0 - 360DEG  
C Interval: 15.0DEG  
Test Speed: HIGH  
Temperature:25.3DEG  
Operators:Meng Yongjian  
Test Date:2017-07-26

γ Range: 0 - 90DEG  
γ Interval: 1.0DEG  
Test System:EVERFINE GO-2000B\_V1 SYSTEM V2.0.288  
Humidity:52%  
Test Distance:5.850m [K=1.0000]  
Remarks:

**ISOCANDELA DIAGRAM**

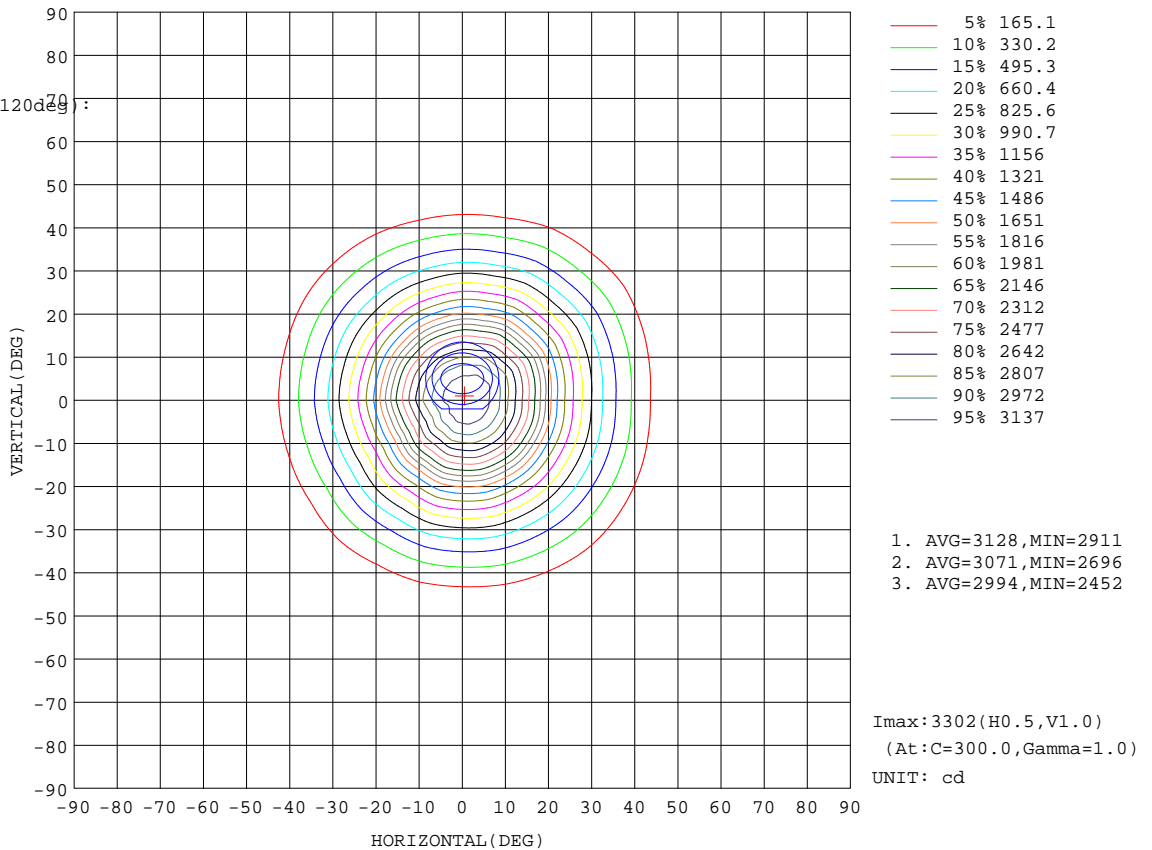
Test:U:220.6V I:0.1332A P:27.69W PF:0.9422 Lamp Flux:1902.8x1 lm		
NAME: FOCUS S-28W-930-40D	TYPE:Downlight	SERIAL No.:
SPEC.:3000K	DIM.: φ70mm*H138mm	
MFR.: NEKO LIGHTING AG		

Conical surface Flux(90deg):

1828.4 lm  
%lum = 96.1%  
%lamp = 96.1%

Conical surface Flux(120deg):

1890.3 lm  
%lum = 99.3%  
%lamp = 99.3%



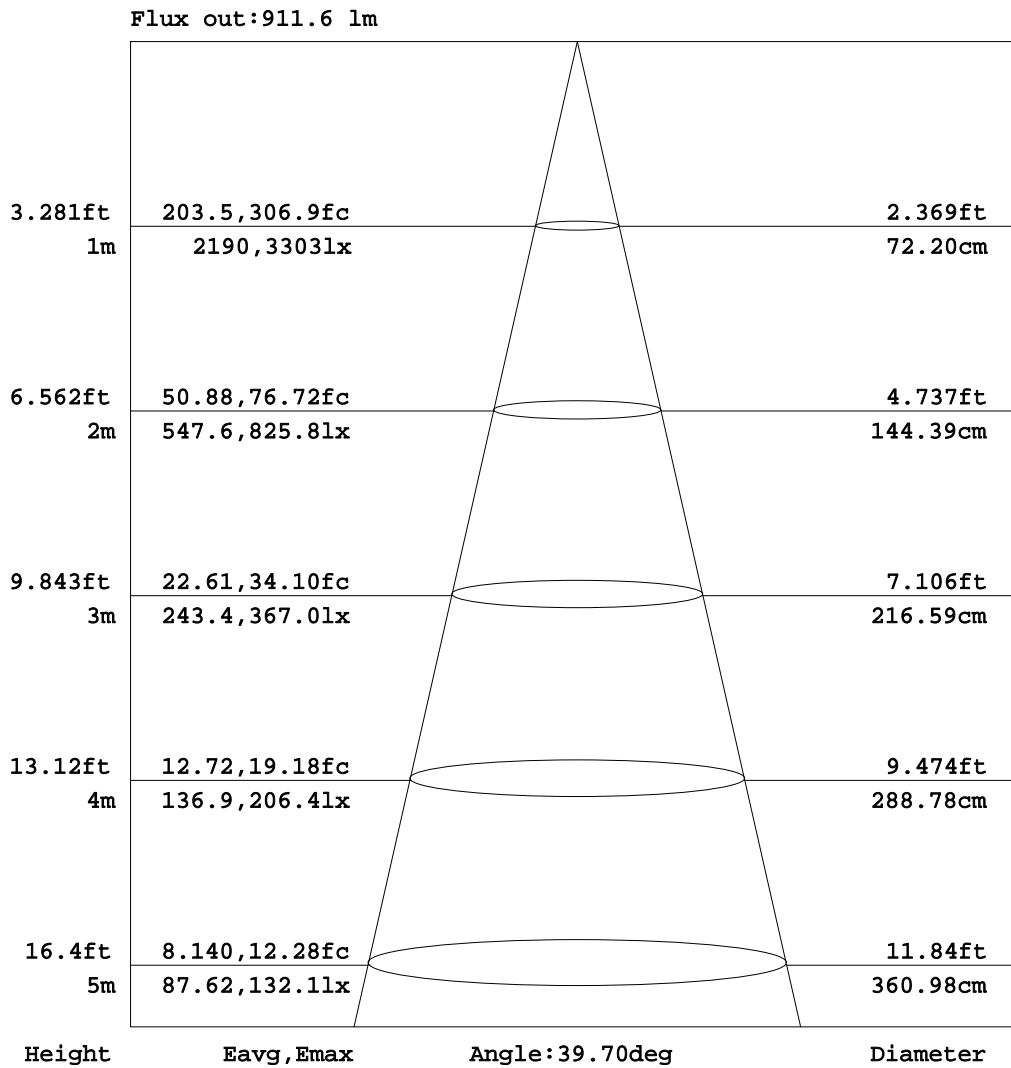
C Range: 0 - 360DEG  
C Interval: 15.0DEG  
Test Speed: HIGH  
Temperature:25.3DEG  
Operators:Meng Yongjian  
Test Date:2017-07-26

γ Range: 0 - 90DEG  
γ Interval: 1.0DEG  
Test System:EVERFINE GO-2000B\_V1 SYSTEM V2.0.288  
Humidity:52%  
Test Distance:5.850m [K=1.0000]  
Remarks:



**AAI Figure**

Test:U:220.6V I:0.1332A P:27.69W PF:0.9422 Lamp Flux:1902.8x1 lm		
NAME: FOCUS S-28W-930-40D	TYPE:Downlight	SERIAL No.:
SPEC.:3000K	DIM.: φ70mm*H138mm	
MFR.: NEKO LIGHTING AG		



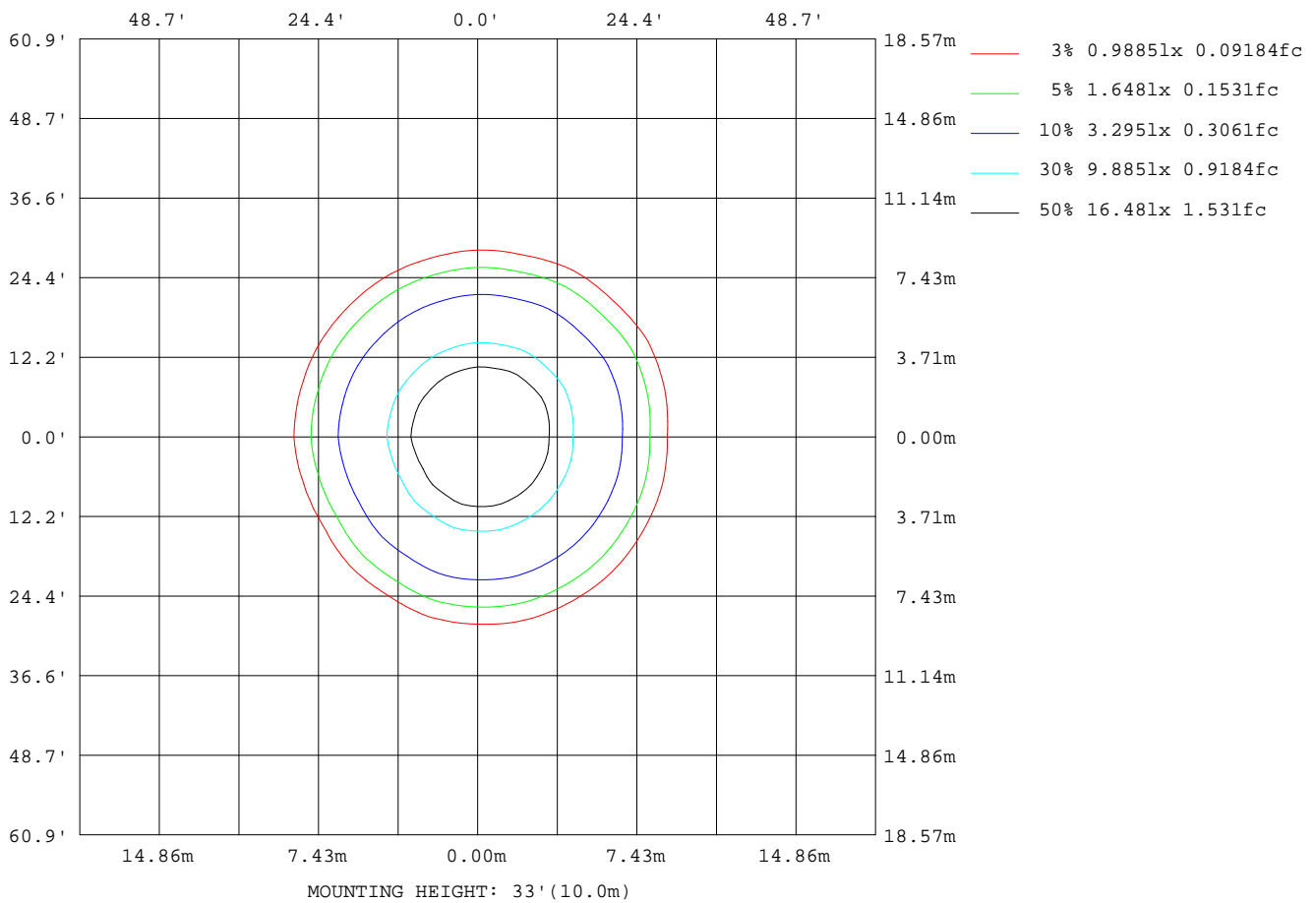
Note:The Curves indicate the illuminated area and the average illumination when the luminaire is at different distance.

C Range: 0 - 360DEG  
C Interval: 15.0DEG  
Test Speed: HIGH  
Temperature:25.3DEG  
Operators:Meng Yongjian  
Test Date:2017-07-26

γ Range: 0 - 90DEG  
γ Interval: 1.0DEG  
Test System:EVERFINE GO-2000B\_V1 SYSTEM V2.0.288  
Humidity:52%  
Test Distance:5.850m [K=1.0000]  
Remarks:

**ISOLUX DIAGRAM**

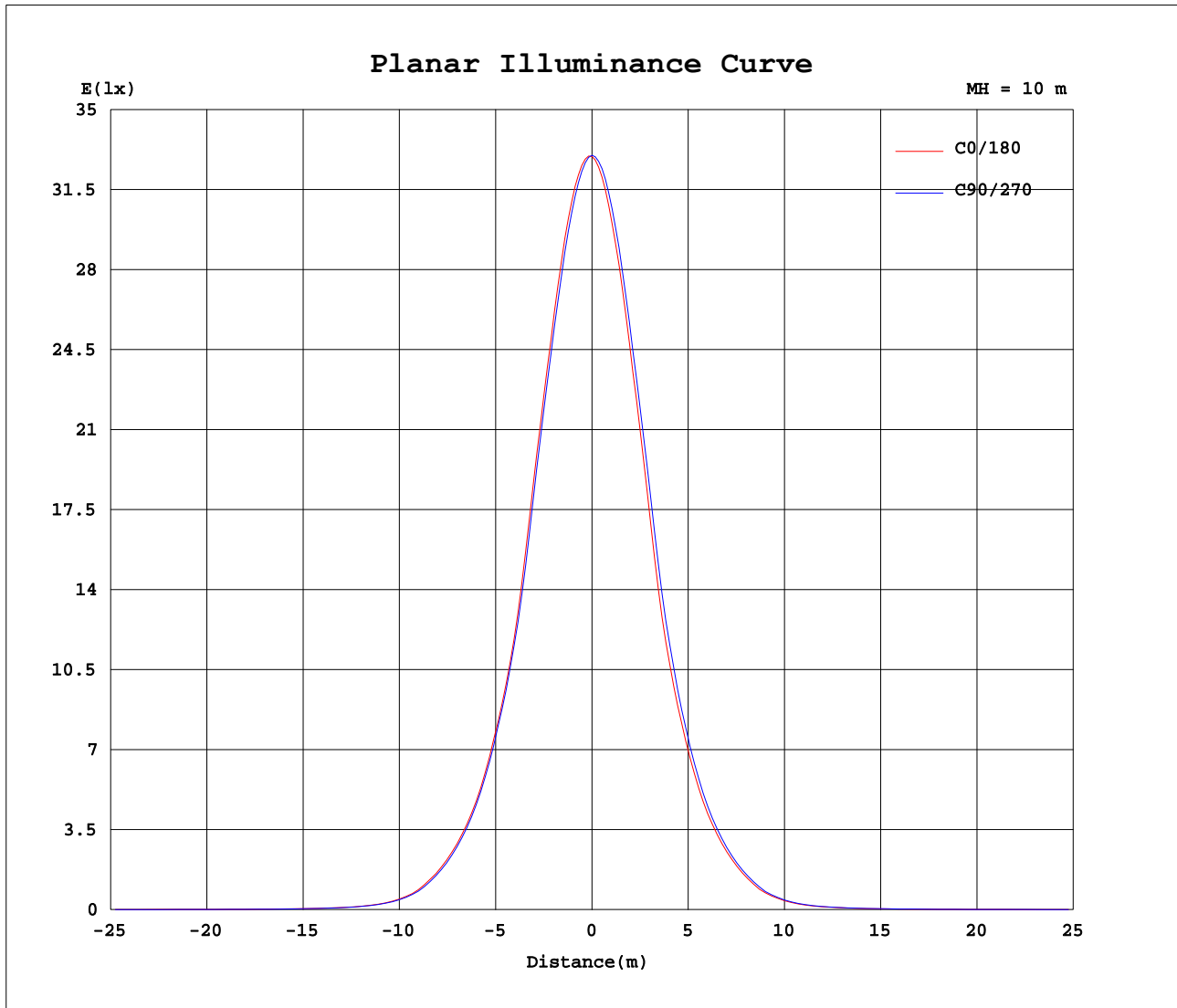
Test:U:220.6V I:0.1332A P:27.69W PF:0.9422 Lamp Flux:1902.8x1 lm		
NAME: FOCUS S-28W-930-40D	TYPE:Downlight	SERIAL No.:
SPEC.:3000K	DIM.: φ70mm*H138mm	
MFR.: NEKO LIGHTING AG		



C Range: 0 - 360DEG  
 C Interval: 15.0DEG  
 Test Speed: HIGH  
 Temperature:25.3DEG  
 Operators:Meng Yongjian  
 Test Date:2017-07-26

γ Range: 0 - 90DEG  
 γ Interval: 1.0DEG  
 Test System:EVERFINE GO-2000B\_V1 SYSTEM V2.0.288  
 Humidity:52%  
 Test Distance:5.850m [K=1.0000]  
 Remarks:

Planar Illuminance Curve



C Range: 0 - 360DEG  
 C Interval: 15.0DEG  
 Test Speed: HIGH  
 Temperature: 25.3DEG  
 Operators: Meng Yongjian  
 Test Date: 2017-07-26

$\gamma$  Range: 0 - 90DEG  
 $\gamma$  Interval: 1.0DEG  
 Test System: EVERFINE GO-2000B\_V1 SYSTEM V2.0.288  
 Humidity: 52%  
 Test Distance: 5.850m [K=1.0000]  
 Remarks:

LUMINOUS DISTRIBUTION INTENSITY DATA

Test:U:220.6V I:0.1332A P:27.69W PF:0.9422 Lamp Flux:1902.8x1 lm		
NAME : FOCUS S-28W-930-40D	TYPE:Downlight	SERIAL No.:
SPEC.:3000K	DIM.: φ70mm*H138mm	
MFR.: NEKO LIGHTING AG		

Table--1

UNIT: cd

γ (DEG) \ C (DEG)	0	15	30	45	60	75	90	105	120	135	150	165	180	195	210	225	240	255	270
0	3295	3297	3300	3300	3301	3301	3301	3300	3296	3294	3270	3266	3295	3297	3300	3300	3301	3301	3301
5	3200	3205	3197	3197	3181	3177	3155	3144	3094	3091	3038	3055	3114	3109	3121	3121	3141	3147	3170
10	2858	2868	2854	2855	2835	2828	2788	2770	2689	2682	2610	2642	2722	2712	2730	2731	2758	2768	2809
15	2355	2371	2353	2359	2332	2331	2287	2264	2160	2146	2050	2089	2188	2172	2194	2194	2233	2247	2301
20	1722	1738	1722	1729	1703	1701	1660	1638	1539	1527	1449	1471	1543	1526	1547	1551	1593	1612	1668
25	1211	1225	1214	1219	1205	1205	1180	1168	1094	1078	1012	1037	1095	1088	1098	1100	1122	1133	1174
30	822	833	825	829	818	821	796	781	724	714	668	685	730	722	732	726	746	753	786
35	525	535	529	530	519	521	502	492	448	445	411	428	461	458	464	460	470	474	495
40	297	305	301	303	295	294	277	269	234	231	205	220	249	245	250	247	256	258	273
45	130	138	133	138	131	133	123	120	104	102	92.6	97.8	111	108	111	109	113	114	121
50	59.4	60.3	60.6	60.8	59.4	58.9	55.9	54.6	47.9	47.1	43.6	45.7	50.3	49.3	50.2	49.8	51.2	51.3	54.8
55	31.5	32.3	31.8	32.1	31.1	31.1	29.4	28.5	25.6	25.4	23.6	24.7	27.0	27.0	27.5	27.4	27.9	28.2	29.9
60	17.9	18.0	17.8	17.9	17.5	17.3	16.5	16.1	14.4	14.3	13.4	14.1	15.4	15.4	15.8	15.8	16.3	16.3	17.2
65	10.6	10.7	10.6	10.6	10.4	10.3	9.93	9.65	8.75	8.62	8.04	8.54	9.47	9.57	9.88	9.96	10.2	10.3	10.6
70	5.73	5.91	5.74	5.77	5.58	5.54	5.11	4.91	4.21	4.07	3.49	3.96	4.70	4.77	4.99	5.01	5.25	5.33	5.52
75	1.60	1.67	1.62	1.69	1.61	1.63	1.41	1.30	0.73	0.71	0.64	0.65	0.82	0.85	0.96	0.88	0.85	0.82	1.13
80	0.42	0.43	0.44	0.45	0.47	0.48	0.49	0.46	0.42	0.41	0.38	0.38	0.38	0.37	0.34	0.35	0.33	0.35	0.35
85	0.23	0.23	0.24	0.23	0.26	0.25	0.27	0.23	0.22	0.19	0.19	0.18	0.17	0.18	0.16	0.17	0.15	0.18	0.17
90	0.11	0.10	0.11	0.10	0.11	0.11	0.13	0.10	0.11	0.11	0.10	0.10	0.06	0.06	0.06	0.06	0.06	0.06	0.06

C Range: 0 - 360DEG  
 C Interval: 15.0DEG  
 Test Speed: HIGH  
 Temperature: 25.3DEG  
 Operators: Meng Yongjian  
 Test Date: 2017-07-26

γ Range: 0 - 90DEG  
 γ Interval: 1.0DEG  
 Test System: EVERFINE GO-2000B\_V1 SYSTEM V2.0.288  
 Humidity: 52%  
 Test Distance: 5.850m [K=1.0000]  
 Remarks:

LUMINOUS DISTRIBUTION INTENSITY DATA

Test:U:220.6V I:0.1332A P:27.69W PF:0.9422 Lamp Flux:1902.8x1 lm		
NAME: FOCUS S-28W-930-40D	TYPE:Downlight	SERIAL No.:
SPEC.:3000K	DIM.: φ70mm*H138mm	
MFR.: NEKO LIGHTING AG		

Table--2

UNIT: cd

C (DEG) \ γ (DEG)	285	300	315	330	345														
0	3300	3296	3294	3270	3266														
5	3182	3225	3226	3237	3210														
10	2828	2909	2908	2951	2903														
15	2322	2420	2419	2474	2417														
20	1696	1807	1806	1874	1802														
25	1196	1274	1270	1317	1264														
30	799	864	864	907	868														
35	506	550	550	581	558														
40	281	314	316	339	324														
45	124	144	142	158	148														
50	56.5	63.4	64.9	69.4	65.0														
55	30.7	33.7	33.6	35.7	34.1														
60	17.6	19.0	18.9	20.0	19.2														
65	10.7	11.5	11.5	12.0	11.4														
70	5.73	6.64	6.61	7.18	6.63														
75	1.32	2.05	2.04	2.28	2.00														
80	0.37	0.39	0.41	0.43	0.43														
85	0.19	0.19	0.21	0.22	0.23														
90	0.06	0.06	0.08	0.07	0.09														

C Range: 0 - 360DEG      γ Range: 0 - 90DEG  
 C Interval: 15.0DEG      γ Interval: 1.0DEG  
 Test Speed: HIGH      Test System: EVERFINE GO-2000B\_V1 SYSTEM V2.0.288  
 Temperature: 25.3DEG      Humidity: 52%  
 Operators: Meng Yongjian      Test Distance: 5.850m [K=1.0000]  
 Test Date: 2017-07-26      Remarks:

Photometric Data Table [cd]

G/C	0.0	15.0	30.0	45.0	60.0	75.0	90.0	105.0	120.0	135.0
0.0	3295	3297	3300	3300	3301	3301	3301	3300	3296	3294
3.0	3269	3274	3270	3271	3262	3258	3242	3236	3202	3200
6.0	3148	3154	3144	3143	3128	3123	3099	3086	3030	3023
9.0	2943	2956	2941	2939	2919	2913	2876	2860	2783	2779
12.0	2667	2682	2666	2670	2650	2644	2601	2581	2491	2481
15.0	2355	2371	2353	2359	2332	2331	2287	2264	2160	2146
18.0	1990	2010	1990	1998	1968	1967	1915	1893	1772	1757
21.0	1599	1613	1597	1608	1586	1587	1547	1529	1441	1429
24.0	1298	1315	1300	1304	1292	1296	1263	1248	1171	1155
27.0	1055	1069	1061	1067	1052	1050	1017	1004	930.7	921.1
30.0	821.6	833.4	825.4	828.8	818.1	820.8	795.7	781.2	723.6	714.2
33.0	633.3	643.4	636.9	638.6	628.3	629.7	608.5	597.7	550.7	543.3
36.0	475.8	483.8	478.8	478.7	471.0	470.6	452.4	443.2	402.1	398.8
39.0	337.6	348.3	342.1	344.7	335.1	334.5	318.2	310.5	275.4	273.2
42.0	214.6	223.3	219.0	221.5	213.5	211.9	198.0	193.0	170.5	169.6
45.0	130.4	138.2	133.2	138.0	131.3	133.5	123.4	120.3	104.0	102.3
48.0	80.67	83.18	82.46	83.41	80.89	80.69	76.22	73.39	64.69	63.75
51.0	50.87	51.96	51.74	52.28	50.63	50.49	47.87	46.96	42.16	42.07
54.0	35.26	35.79	35.53	35.72	34.93	34.75	33.25	32.52	29.08	28.84
57.0	24.98	25.24	25.08	25.10	24.52	24.28	23.12	22.66	20.12	20.01
60.0	17.85	18.01	17.77	17.85	17.46	17.33	16.50	16.09	14.43	14.30
63.0	13.07	13.17	13.04	13.06	12.78	12.65	12.04	11.69	10.63	10.49
66.0	9.716	9.797	9.657	9.711	9.513	9.420	8.975	8.719	7.816	7.707
69.0	6.886	7.055	6.868	6.902	6.713	6.661	6.168	5.973	4.985	4.871
72.0	3.933	3.996	3.907	3.935	3.765	3.747	3.392	3.151	2.254	2.203
75.0	1.598	1.672	1.619	1.689	1.612	1.632	1.414	1.299	0.7335	0.7056
78.0	0.5188	0.5287	0.5407	0.5506	0.5692	0.5964	0.5954	0.5659	0.5253	0.5134
81.0	0.3766	0.3801	0.3918	0.3953	0.4160	0.4303	0.4444	0.4084	0.3722	0.3582
84.0	0.2628	0.2599	0.2738	0.2686	0.2934	0.2904	0.3110	0.2686	0.2497	0.2292
87.0	0.1774	0.1638	0.1840	0.1703	0.1971	0.1747	0.2081	0.1616	0.1577	0.1310
90.0	0.1071	0.1050	0.1071	0.1050	0.1115	0.1115	0.1290	0.1050	0.1071	0.1071
G/C	150.0	165.0	180.0	195.0	210.0	225.0	240.0	255.0	270.0	285.0
0.0	3270	3266	3297	3300	3300	3300	3301	3301	3301	3300
3.0	3159	3167	3218	3216	3224	3226	3237	3240	3255	3259
6.0	2969	2987	3050	3046	3060	3060	3079	3087	3116	3127
9.0	2708	2739	2818	2809	2826	2826	2852	2859	2899	2917
12.0	2402	2436	2516	2505	2524	2526	2559	2569	2616	2638
15.0	2050	2089	2188	2172	2194	2194	2233	2247	2301	2322
18.0	1662	1698	1795	1777	1802	1802	1844	1862	1928	1956
21.0	1349	1375	1440	1426	1445	1446	1484	1502	1555	1581
24.0	1095	1117	1171	1163	1177	1176	1200	1213	1263	1287
27.0	864.9	887.4	938.3	929.1	940.7	938.8	961.3	971.1	1009	1028
30.0	668.1	685.0	729.9	721.6	732.2	726.5	745.9	753.3	786.2	799.0
33.0	505.9	521.2	560.4	556.7	562.6	558.9	569.8	578.2	602.1	611.9
36.0	367.0	382.4	416.1	411.5	417.9	413.9	424.6	426.6	446.2	454.8
39.0	244.7	261.4	289.5	285.9	290.0	288.2	296.0	298.5	314.5	319.8
42.0	152.0	161.5	179.9	176.4	179.7	177.4	182.8	183.1	194.1	199.6
45.0	92.64	97.79	110.9	108.3	110.9	109.3	112.7	114.0	120.5	124.3
48.0	58.17	61.08	67.58	66.21	67.46	66.56	68.74	69.07	73.78	76.42
51.0	38.24	40.52	44.24	43.93	44.35	44.27	44.91	45.19	47.39	48.52
54.0	26.36	27.71	30.79	30.79	31.28	31.29	31.73	32.15	33.52	34.23
57.0	18.67	19.51	21.51	21.30	21.95	21.82	22.46	22.70	23.75	24.33
60.0	13.43	14.10	15.39	15.37	15.79	15.79	16.27	16.35	17.21	17.57
63.0	9.899	10.41	11.42	11.48	11.81	11.87	12.20	12.23	12.77	12.97
66.0	7.168	7.672	8.498	8.625	8.911	9.021	9.272	9.294	9.643	9.749
69.0	4.321	4.799	5.607	5.669	5.917	5.967	6.296	6.343	6.641	6.880
72.0	1.950	2.124	2.790	2.796	2.995	3.032	3.232	3.252	3.617	3.827
75.0	0.6380	0.6467	0.8198	0.8472	0.9591	0.8760	0.8454	0.8171	1.129	1.317
78.0	0.4750	0.4741	0.4805	0.4617	0.4433	0.4421	0.4302	0.4421	0.4477	0.4640
81.0	0.3350	0.3363	0.3274	0.3239	0.3035	0.3108	0.2947	0.3130	0.3122	0.3305
84.0	0.2213	0.2140	0.2029	0.2103	0.1898	0.2058	0.1855	0.2080	0.1986	0.2233
87.0	0.1315	0.1093	0.1024	0.1075	0.0981	0.1183	0.0981	0.1227	0.1091	0.1358
90.0	0.1028	0.1028	0.0612	0.0612	0.0590	0.0590	0.0590	0.0612	0.0590	0.0634
G/C	300.0	315.0	330.0	345.0						
0.0	3296	3294	3270	3266						
3.0	3285	3286	3286	3264						
6.0	3179	3178	3200	3168						
9.0	2990	2991	3026	2982						
12.0	2724	2727	2777	2723						
15.0	2420	2419	2474	2417						
18.0	2073	2073	2139	2070						
21.0	1682	1681	1743	1672						

C Range: 0 - 360DEG

C Interval: 15.0DEG

Test Speed: HIGH

Temperature: 25.3DEG

Operators: Meng Yongjian

Test Date: 2017-07-26

γ Range: 0 - 90DEG

γ Interval: 1.0DEG

Test System: EVERFINE GO-2000B\_V1 SYSTEM V2.0.288

Humidity: 52%

Test Distance: 5.850m [K=1.0000]

Remarks:

Photometric Data Table [cd]

24.0	1371	1366	1411	1353
27.0	1107	1104	1145	1106
30.0	863.9	864.1	907.0	867.6
33.0	662.2	662.0	695.6	667.5
36.0	496.8	496.4	527.0	504.4
39.0	354.9	356.2	384.3	365.6
42.0	233.0	232.7	258.4	240.9
45.0	144.1	141.8	158.2	147.5
48.0	86.81	87.60	95.81	89.78
51.0	55.17	55.14	59.80	56.30
54.0	37.56	37.52	40.57	38.36
57.0	26.52	26.52	28.30	26.95
60.0	19.03	18.94	20.01	19.18
63.0	14.04	13.96	14.67	14.03
66.0	10.53	10.46	10.95	10.40
69.0	7.732	7.666	8.091	7.616
72.0	4.675	4.648	5.045	4.579
75.0	2.053	2.041	2.283	2.001
78.0	0.4936	0.5078	0.5438	0.5386
81.0	0.3471	0.3633	0.3821	0.3852
84.0	0.2270	0.2452	0.2510	0.2649
87.0	0.1331	0.1577	0.1528	0.1686
90.0	0.0634	0.0809	0.0743	0.0853

C Range: 0 - 360DEG  
 C Interval: 15.0DEG  
 Test Speed: HIGH  
 Temperature: 25.3DEG  
 Operators: Meng Yongjian  
 Test Date: 2017-07-26

γ Range: 0 - 90DEG  
 γ Interval: 1.0DEG  
 Test System: EVERFINE GO-2000B\_V1 SYSTEM V2.0.288  
 Humidity: 52%  
 Test Distance: 5.850m [K=1.0000]  
 Remarks: