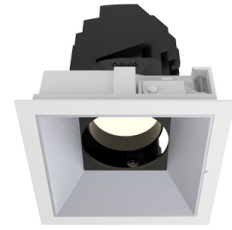


SENSE 125 Square

Manufacture: NEKO LIGHTING AG

Type: SENSE Modular Downlight SMS1-9302018F-WM



General

- Indoor
- Downlight
- Adjustable
- Recessed
- Version: square
- Housing: white
- Reflector: matt
- System Output: 1300lm
- IP 20



LED

- 3000K
- CRI90
- 2000lm
- 50000h@L80B10
- SDCM: 3

Optics

- Beam angle: 20°
- UGR <19

Electric

- LED Driver: ON-OFF
- LED Power: 18W
- System Power: 21W
- 36V
- 500mA

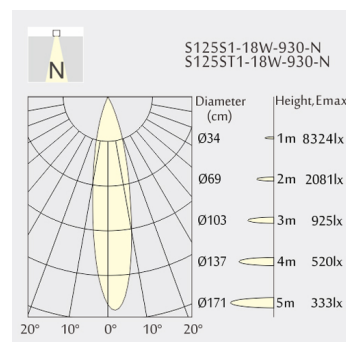
Dimensions

- Measurement: 134mm x 134mm
- Cutout: 122mm x 122mm
- Height: 162mm
- Ceiling height: 212mm
- Net Weight: 850g
- Gross Weight: 1200g
- Pivot: max. 30°
- Rotation: 355°

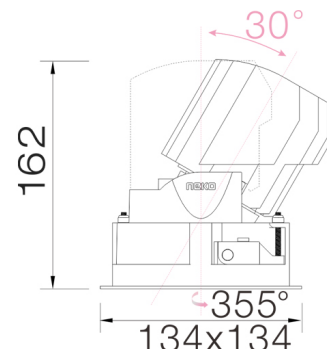
Description

Square recessed ceiling downlight made of die-cast aluminium with white powder-coating finish (RAL 9016) and matt reflector; ON-OFF Driver; LED 18W; measurement 134mm x 134mm; ceiling cutout of 122mm x 122mm with a narrow mounting trim; luminaire's weight is approximately 850g; rotation 355° and pivot max. 30°; CCT 3000K with an LED Output of 2000lm; high color rendering at an index of CRI90; after a lifetime of 50000h min. 80% of the luminous flux with energy efficient CITIZEN LED Chips; 5 years warranty; narrow beam characteristic with 20° beam angle; lighting perfectly suitable for reading, writing as well as computer and control work according to DIN EN 12464-1 (UGR<19); degree of housing protection according to DIN EN 60529 (IP20)

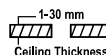
Light distribution



Technical drawing



122x122mm



The technical data represent rated values for an ambient temperature of 25°C. The data values for the luminous flux are initially subject to a tolerance of +/- 10%, those for the electrical connected load are initially subject to a tolerance of +/- 10%, and those for the colour temperature are initially subject to a tolerance of +/- 150 K. No liability is assumed for typographical or printing errors. The general terms and conditions of NEKO Lighting AG apply.